

# JUNE 2026

THE NORTH SHORE'S ULTIMATE  
**REAL ESTATE**  
GUIDE





**COLDWELL BANKER**  
**NORTH SHORE**

**218-387-2131**  
**800-732-2131**

**101 WEST HIGHWAY 61**  
**GRAND MARAIS, MN 55604**

**LAKE HOMES & CABINS**

**185 Sag Lake Trail**

Discover a rare luxury retreat at the very end of the Gunflint Trail on pristine Gull Lake. This four-bed, three-bath home sits on five private acres with 467 feet of shoreline, offering unmatched tranquility, world-class fishing, and direct BWCAW access. Enjoy a gourmet kitchen, lakeview dining, a spacious living room with stone fireplace, and a sunlit deck. The main-floor primary suite features panoramic views and a spa-style bath. Two additional bedrooms, a bonus room, two rustic guest cabins, heated garages, and a large workshop complete this exceptional Northwoods property—an extraordinary and scarce lakeside opportunity.

MLS 6123462

**\$1,399,000**



**NEW 92 Erickson Trail**

Hand-hewn log cabin retreat on 10 private acres with 450+ feet of shoreline on secluded Pancore Lake near Tofte. This timeless Northwoods property features a main log cabin with lake views, two sleeping lofts, native stone fireplace, pine floors and spacious deck overlooking the water. A second log cabin offers flexible guest, studio or office space, while a separate bathhouse supports comfortable off-grid living. Enjoy exceptional splake fishing, star-filled skies and frequent northern lights displays. Surrounded by forest and near BWCAW access, Lake Superior and endless trails.

MLS 6124626

**\$759,900**

**NEW 41 S Bearskin Road**

Perched above West Bearskin Lake, this well-maintained year-round cabin offers breathtaking panoramic views and immediate access to Northwoods adventure. Featuring 1 bedroom, 1 bathroom and a cozy sleeping loft, the cabin is designed for comfortable lake living in every season. A spacious deck provides the perfect spot to relax, entertain and enjoy the scenery. Located near the BWCA and surrounded by pristine lakes, the property offers easy access to paddling, fishing, hiking, skiing and snowmobiling. Paddle to Rose Falls, dine at Hungry Jack Lodge, or hike Honeymoon Bluff. Includes storage shed and heated 10x16 shed.

MLS 6124820

**\$699,000**



**WWW.CBNORTHSHORE.COM**



**COLDWELL BANKER**  
**NORTH SHORE**

**218-387-2131**  
**800-732-2131**

**101 WEST HIGHWAY 61**  
**GRAND MARAIS, MN 55604**

**HOMES & CABINS**

**NEW 1804/1810 E Hwy 61**

Rare Lake Superior view property on 1.17 acres near Grand Marais featuring a spacious 4-bedroom main home, private apartment and charming guest house with stunning lake views. This versatile property offers multiple living spaces ideal for hosting, multigenerational living or rental income. Bright interiors, expansive decks and walls of windows showcase breathtaking views throughout. The main home includes generous gathering spaces, private primary suite, large laundry room and flexible lower-level rooms for hobbies or recreation. Guest and apartment spaces offer privacy and comfort with separate entrances.

**MLS 6124556**  
**\$849,900**



**NEW 969 Devil Track Road**

Stunning 3+ bedroom, 3-bath home on 5 private acres featuring open-concept living, expansive windows, bamboo floors and warm Alder cabinetry. The main level includes a spacious primary suite, home office, laundry and cozy woodstove for year-round comfort. The finished lower level offers a large family room, two bright bedrooms, full bath and flexible recreation space. An attached garage and generous utility room provide excellent storage. The insulated and heated 24x40 outbuilding includes a full bath and studiospace, ideal for a workshop, guest quarters or rental income opportunity.

**MLS 6124868**  
**\$629,900**



**2947 W HIGHWAY 61**

Charming hillside cabin on 8+ private acres with sweeping Lake Superior views near Grand Marais.

**MLS 6124744 • \$349,900**



**550 HUMPHREY CIRCLE**

Light-filled, energy-efficient 4BR/2BA home in the city limits! Enjoy open-concept living with a spacious layout.

**MLS 6123681 • \$499,900**



**3X SKYE RIDGE**

Charming bunkhouse with cozy sleeping loft, nestled on 6.9A with the Little Devil Track River as the northern boundary line. Electric & broadband available.

**MLS 6120074 • \$154,900**

**WWW.CBNORTHSHORE.COM**



**COLDWELL BANKER**  
**NORTH SHORE**

**218-387-2131**  
**800-732-2131**

**101 WEST HIGHWAY 61**  
**GRAND MARAIS, MN 55604**

**CONDO**

**REDUCED**



**BLUEFIN BAY ON LAKE SUPERIOR - UNIT 30**

Bluefin Bay Unit 30 is a stunning Lake Superior retreat featuring breathtaking shoreline views, a custom wood-burning fireplace and beautifully updated interiors. Enjoy cooking with panoramic lake views, relaxing in the double whirlpool tub and unwinding on the lakeside deck. This tastefully appointed unit comfortably hosts family and friends with a pull-out couch and access to resort amenities and activities.

**MLS 6124295 • \$429,900**

**LAND**

**X30 ISAK RIDGE ROAD**

Beautiful Lutsen lot with year-round access, utilities available, near skiing, hiking, fishing, and snowmobiling.

**MLS 6123830 • \$59,900**

**78 TROLL'S TRAIL**

Affordable Lake Superior lot with a beautiful view, shared driveway and 7A

**MLS 6124369 • \$69,000**

**PENDING**



**TOM LAKE**

Serene Tom Lake lot with over 150' of easily accessible shoreline, year-round access and completed driveway.

**MLS 6123264 • \$159,900**

**1XX W 13TH AVE**

Nicely wooded and sunny Grand Marais city lot with utilities and utilities right in yet.

**MLS 6118743 • \$59,900**

**PENDING**

**7XX COUNTY ROAD 6**

107 acres near Grand Marais with creek frontage, federal land access, and endless potential for building, recreation, or development.

**MLS 6122995 • \$399,900**



**NEW**

**XXX SPRINGDALE RD**

Stunning 80-acre retreat with Lake Superior views, maple forest, wildlife trails and exceptional privacy—ideal for camping or an off-grid cabin.

**MLS 6124939 • \$299,900**



**NEW**

**76XX POPLAR LAKE**

Rare 188-foot Poplar Lake frontage on 1.43 private acres near BWCAW, trails and resorts—build your ideal Northwoods getaway retreat for all seasons.

**MLS 6125140 • \$299,900**



**463 S GUNFLINT LAKE RD**

Exceptional Gunflint Lake lot with 237 feet of shoreline, trails and camping spots near BWCA, Bridal Veil Falls and year-round recreation.

**MLS 6124666 • \$349,900**

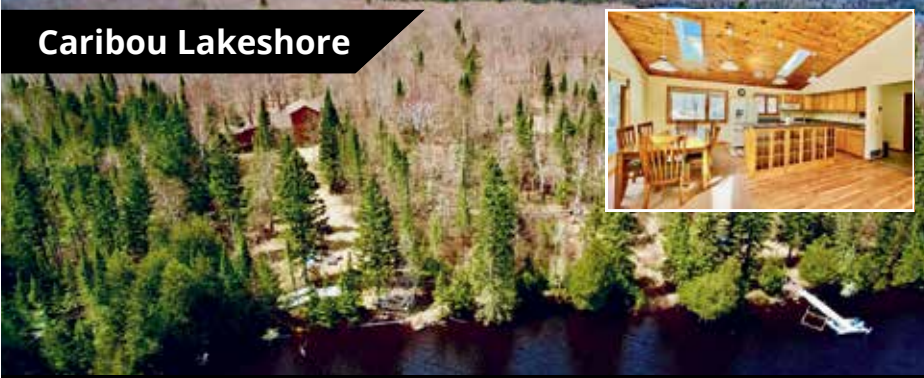
**PENDING**

**WWW.CBNORTHSHORE.COM**

**Edina Realty**

**EIP** EXCEPTIONAL PROPERTIES

**Caribou Lakeshore**



**38 Sawmill Ln, Lutsen, MN 55612 | MLS #6124910**

4 2 2,380 \$899,900

**Lake Superior Views**



**21 Turnagain Tr, Lutsen, MN | MLS #6124727**

4 3 3,436 \$889,000

**IMPROVED VALUE**



**67 Snowshoe Tr, Tofte, MN**

**CORNER LOT**



**265 Mink Ranch, Lutsen, MN**

**PENDING**



**1480 Devil Track Rd, Grand Marais**

**SOLD**



**xxx Big Cedar Trl, Lutsen, MN**

**Inger Andress** REALTOR

218-216-7141

IngerAndress@edinarealty.com

edinarealty.com/inger-andress-realtor



Edina Realty - Lutsen  
5321 W. Highway 61 #6  
Lutsen, MN 55612

**REAL ESTATE**  
*for the Long Term*

As the North Shore shifts into spring, so do opportunities. We don't just help you buy and sell homes—we support what comes next. From property valuation and land planning to business development strategy and creative financing, our work extends well beyond the transaction.

We're here for the long haul—We're your

**TRUSTED REAL ESTATE PARTNER,**

not just your agent.



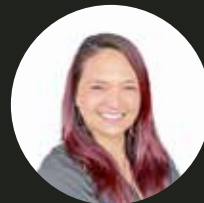
**MEET OUR AWESOME TEAM**



**MOLLY O'NEILL** | Agent  
(218) 370-2079  
molly@lutsenrealestategroup.com



**MIKE LARSON** | Associate Broker  
(218) 370-1536  
mike@staycvr.com



**SARENA CROWLEY**  
Agent and Co-owner



**CLAIR STODDARD**  
Co-owner



**STEVE SURBAUGH**  
Broker and Co-owner



**LUTSEN**  
REAL ESTATE GROUP



# RED PINE REALTY

LOCALLY OWNED AND OPERATED SINCE 1996

14 S. BROADWAY, GRAND MARAIS, MN | 218-387-9599



VISIT OUR OFFICE TO SPEAK WITH A REALTOR. OFFICE HOURS: M-F 9AM-5PM, SAT 10AM-4PM

REALTORS®: *Sue Nichols, Broker • Jake Patten, Assoc. Broker • Jess Smith • Melissa Gregg • Mike Raymond  
Rebecca McAllister • Casey O'Brien • Alice McFarlane, Office Administrator*

## FEATURED LISTING



### NEW! UNIQUE LAKE SUPERIOR QUALITY

This beautiful timber-frame home sits on gently sloped ledgerrock shore, with coves, and spectacular views to the Grand Marais harbor. Privacy and pristine beauty on 3+ acres and 230 feet of shoreline, just a short walk to town. Uncompromising quality and charm, the 5200 sqft home has reclaimed timbers from the "world's largest railroad roundhouse" of early 1900's Proctor. Masterfully crafted into a stunning private "lodge" with soaring ceilings and expert joinery showing the character of massive douglas fir timbers. Stone fireplace, wood and tile floors, professional kitchen, 5 bedrooms, 5 baths, office, sitting room, cedar sauna, rec room, workout room, and more. Designed maximum energy efficiencies. Attached 3-car heated garage. There's privacy on the expansive ironwood deck with outdoor fireplace. Plus, a 40x30 shop building with the same timber-framing, high ceilings, bathroom, kitchen and lounge area.

MLS#6124739 **\$3,760,000**

## FEATURED LISTING



### NEW! LAKE SUPERIOR SERENITY HOME

Experience the pinnacle of North Shore living with this spectacular, sprawling 3-bedroom, 4 bath home. Tucked away on a pristine, wooded 13.59-acre lot, this property offers unparalleled privacy, breathtaking views and a magnificent 400 feet of Lake Superior frontage. The main home is designed for comfort with a beautiful stone fireplace, open concept floorplan bathed in natural light, and perfect for entertaining. Guests can enjoy their own space in the fully equipped apartment designed for comfort located above the detached 26'x34' garage. An additional 54'x40' Morton building offers immense space for projects, storing boats and additional parking. Whether you're looking for a serene year-round residence or an exceptional retreat, this rare gem is a must see.

MLS#6125026 **\$2,300,000**

## FEATURED LISTING



### DEVIL TRACK LAKE CABIN

4-season, turn-key, furnished 2-bedroom cabin on Devil Track Lake features an open concept floor plan with vaulted ceilings and a large wall of windows letting in ample light. Enjoy views of the lake from the living room and the spacious loft. Current owner updates include connecting to power and broadband; a new dock; a wood burning stove; and a 3-season screened in porch.

MLS#6125101 **\$599,000**

## FEATURED LISTING



### NEW! FINLAND ACRES & CABIN

6.74 acres just a couple miles from Hwy 61, an opportunity to create your own retreat near Lake Superior. Property features a partially completed 13' x 12' cabin and a shed, giving you a head start to finish the space and expand over time. Power and a drilled well are in place. A driveway is established with private gated entry. Property sits off a maintained road for year-round use.

MLS#6124627

**\$158,900**

[www.RedPineRealty.com](http://www.RedPineRealty.com) • [info@RedPineRealty.com](mailto:info@RedPineRealty.com)

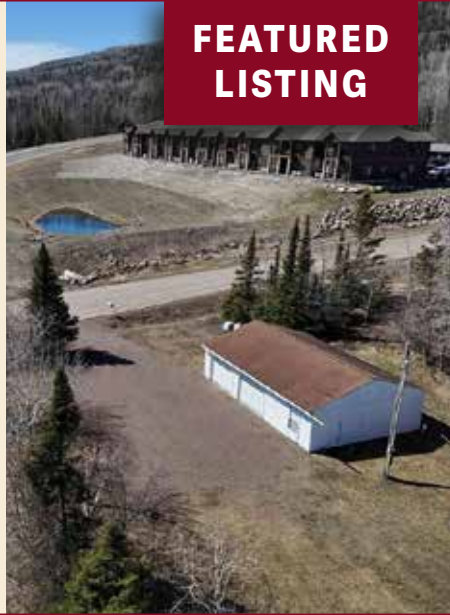


**VISIT OUR OFFICE TO SPEAK WITH A REALTOR. BUSINESS HOURS: M-F 9AM-5PM, SAT 10AM-4PM**

**NEW! GRAND MARAIS LOT WITH LAKE SUPERIOR VIEWS**

Lots of options with this Lake Superior view lot! Build a house, a duplex, or an apartment. Plenty of outdoor parking and a 936 sq ft garage. There's room to build a small house across the driveway from the garage. Or build a large house after relocating garage doors to the west end. Or build an apartment with a conditional use permit. Or split lot into 2 parcels. Electric on site. Water/sewer in adjacent street.

MLS# 6124734 **\$160,000**



**FEATURED LISTING**

**FEATURED LISTING**



**TOM LAKE LOT**

Buildable lot nicely prepped for your future plans. Driveway, parking area and a building site all ready to go. Electric and fiber optic are available at the roadside. From the building site there is a gentle slope to the waters edge that leads to a small bay with southern exposure. Special assessments in property taxes for Wilderness Trail snow plowing and county solid waste fee.

MLS#6124856  
**\$125,000**

**FEATURED LISTING**



**NEW! 20 ACRES OFF OF COUNTY RD 6**

20 acres of high and dry land with Monker Creek running through. Federal Land to the North and West of the property. Easement is in place, but you will need to build a road in to access the property or hike in. Approximately 3200' off County Rd 6 along the power line and an easement to access.

MLS#6125127 **\$80,000**

**DEERYARD LAKE COTTAGE**

Set on 2.11 acres within a quiet HOA, this stone cottage rests along 200ft of Deeryard Lake shoreline. Cottage features 2 bedrooms and 3 bathrooms with a few unfinished spaces, including a kitchen, laundry area, bathroom, and bedroom, ready for your finishing touches. A detached 2 stall garage with a workshop provides room for projects.

MLS#6123425  
**\$549,000**



**FEATURED LISTING**

**HOMES AND CABINS**



**RUSTIC CABIN WITH ACREAGE**

Outdoor paradise on 19.62 acres! Rustic cabin about 100 feet from Judge Magney State Park. Great hunting retreat or dog sled adventure stop. ATV or snowmobile access currently, with legal access in placeto build a driveway. Electricity/broadband coming to the road this year!

MLS#6124300 **\$100,000**

**INLAND WATER PROPERTIES**



**SEA GULL LAKE RETREAT**

Charming Cape Cod-inspired lake home, outstanding views of the lake and surrounding BWCAW wilderness. Rock outcroppings and pines, great privacy, 252ft of accessible shoreline, 3.5 acres. Floating dock and great swimming. Two bedroom, 2 level home shows exceptional quality. Expansive windows and screen porch, plus upper-level deck. Home is set up for simple living. Composting toilet, outhouse, lake water system, with plans for a bath house/sauna not yet completed.

MLS#6124149 **\$595,000**

**LAND/BUILDING SITES**

MLS#	ADDRESS	CITY	PRICE	ACRES	DESCRIPTION
6124608	XX S LOST LAKE RD	HOVLAND	\$62,000	20.25	DEEDED ACCESS TO LOST LAKE
6120357	LOT 2 BLOCK 6 PINE PEAK RD	LUTSEN	\$55,000	2.15	DEEDED ACCESS TO TAIT LAKE
6124732	XX BLACK GRANITE TR	HOVLAND	\$160,000	80.00	DEVELOPMENT POTENTIAL
6123454	4873 NORTH RD	HOVLAND	\$325,000	25.03	PREPARED BUILDING SITE
6123050	LOT 3 BLOCK 6 PINE PEAK RD	LUTSEN	\$58,000	2.37	DEEDED ACCESS TO TAIT LAKE

[www.RedPineRealty.com](http://www.RedPineRealty.com) • [info@RedPineRealty.com](mailto:info@RedPineRealty.com)



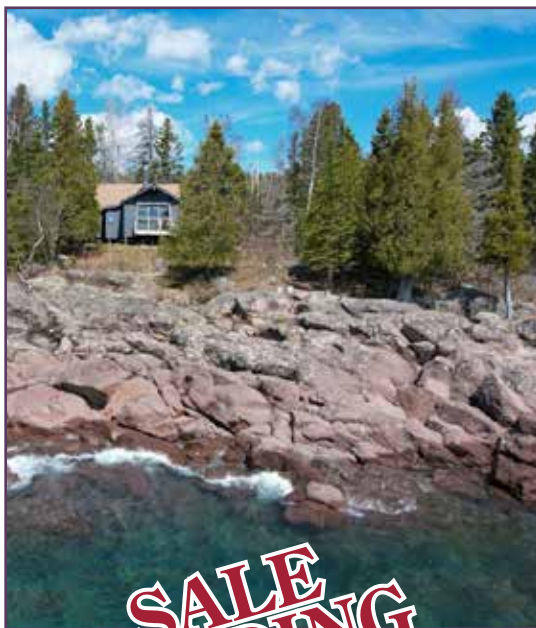
# 10th Annual Lutsen Block Party!!

🎵 July 17th 5-7pm. All are welcome! 🎵  
*Let Us Show Our Appreciation! LIVE MUSIC! FREE FOOD!*

**Info@TimberWolfRealty.com**

Call TimberWolff for  
 Your Personal Tour of  
 Homes & Land!!!  
 Local (218) 663-8777  
 Toll free (877) 664-8777

## DREAMING OF LAKE SUPERIOR?



### NEW! LAKE SUPERIOR CLASSIC ROCK IN LUTSEN!

Classic Cascade Beach Road, Lutsen Cabin perched on 128ft of Lake Superior ledge-rock. One bedroom but you may as well add a pull-out in the beamed cathedral living room because sleeping there will be everyone's favorite: wave lullaby, sunrises over the endless blue! Timeless charm folks! There's a deck overlooking the comings and goings of Gitche Gumeew, warblers, and ore boats. Keep rolling like the current owners with septic holding tank and Lake Superior water system or consider other options. Lutsen Mts Ski Resort and Superior National Golf Course are very close. All the fun of Grand Marais is about 15 minutes away. Stroll or bike along the Cascade Beach Rd for exercise - very peaceful, ol' country road. Become a steward of this property. Loving it up like it has been for many years!

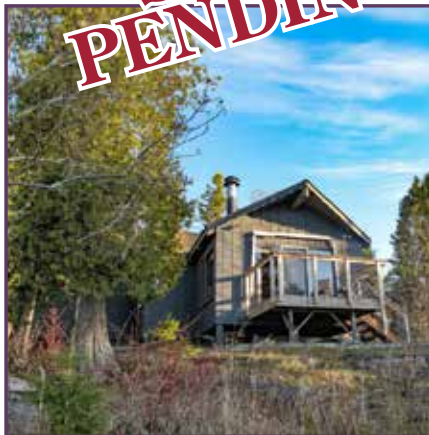
Your turn.  
**MLS# 6124905**  
**\$670,000**

**SALE PENDING**



### NEW! HEART AND SOUL ON LAKE SUPERIOR IN HOVLAND!

Stunning Scandinavian-design North Shore home with expansive Lake Superior water views. Renowned builder Clarence Kemp designed and built the modern addition to the home which combines a modern Scandinavian design with a classic Northwoods cabin and includes two bedrooms, three baths, and a couple kitchens creating ample space for friends and family. Most importantly the home has beautiful panoramic views of Lake Superior with 212ft of shoreline and 7+ acres to wander on! Enjoy the sauna to soothe those sore muscles after spending the day outdoors, or sit in the 4-season porch with a good book. Outside is a simple garage with a bunkroom awaiting your vision. The forest all around is classic Northwoods with wildlife and much to see and explore. Visit today and start enjoying your own adventures along the Big Lake! **MLS#6125015 \$1,200,000**



### LAKE SUPERIOR CONDO AT BLUEFIN BAY IN TOFTE!

This is a rare chance to own one of Bluefin Bay's beautiful 3-bedroom condos in Tofte, closer to Lake Superior than any other lodging on the North Shore! The unit sits conveniently near the resort restaurant and right across from the indoor pool, making it a perfect spot for a relaxing getaway. Enjoy your time on the North Shore in your own condo curled up next to the gas fireplace with a book while listening to the waves hit the shore, and while you are gone let it offset ownership costs with its strong rental history managed by an onsite professional company. Whether you're playing tennis in the summer, skating on the rink in winter, exploring Tofte Park, or simply strolling the shoreline with no plans at all, this condo puts the very best of the North Shore right at your doorstep.

**MLS#6124171 \$560,000**



**SOLD**

### WOLF LANDING ON LAKE SUPERIOR! MLS#6122114

**\$1,225,000**

**FIND THOSE NEW LISTINGS FIRST!!**

**EMAIL INFO@TIMBERWOLFFREALTY.COM TO SIGN UP FOR AUTO EMAIL!**



## 10th Annual Lutsen Block Party!!

🎵 July 17th 5-7pm. All are welcome! 🎵  
 Let Us Show Our Appreciation! LIVE MUSIC! FREE FOOD!

Info@TimberWolfRealty.com

Call TimberWolff for  
 Your Personal Tour of  
 Homes & Land!!!  
 Local (218) 663-8777  
 Toll free (877) 664-8777

## THE INLAND WATERS ARE CALLING!



### NEW! ENJOY THE GOOD LIFE ON THE BAPTISM RIVER IN FINLAND!

A few miles outside of Finland Minnesota, 1225 ft of frontage on the West Baptism River flows happily and peacefully through 13+ acres of iconic Northwoods Real Estate with two classic cabins. The main cabin is a log home expertly built and lovingly maintained. The guest cabin is a charming hybrid of log and stick frame building spacious enough to hold a whole crew. Best part is each is year round with two bedrooms and full baths. Lots of room here, paths to walk on your own land, snowshoe, ski. Life flows like the river, effortlessly and pristine.

Visit now and enjoy life on the river. **MLS# 6124974 \$650,000**

**PEACEFUL GETAWAY  
 JUST MINUTES FROM  
 GRAND MARAIS!  
 MLS#6123466 \$405,000**



### PADDLER'S DREAM CABIN ON TAIT LAKE IN LUTSEN!

Enjoy South facing views on Tait Lake, while listening to the Tait River meander its way in to the lake! 190ft of shoreline on Tait Lake, and the river frontage is a bonus for wildlife viewing! Large lake lot, nearly 3 acres allows for plenty of elbow room. The cabin interior is recently renovated with sweet upgrades, and a new oversized two car garage makes this a must-see lake cabin at this price! Tait Lake is about 15 minutes from downtown Lutsen, and just a few miles from the Boundary Waters Brule Lake entry point, the best of both worlds!

**MLS#6124017 \$565,000**



### TANGLED UP IN VIEW!

Mountain top living in Lutsen, this home exudes Views! Both of Tait Lake in Lutsen as well as the ridgeline to Murphy Mountain and Cut Face Creek toward Grand Marais! Built onto the ledge rock of a ridge almost as high as Eagle Mountain! The Main floor features a great room with large stone fireplace and open concept kitchen/dining/family room space, along with a main floor bedroom, laundry room, and don't forget the screened porch for the bug season! Upper level is all about the views, with primary en suite bedroom and den space. As part of the Tait Lake Association, owners can utilize the two canoe launches for day trips on the lake in the summer or to launch your fishing boat for a day on the lake. No vacation nor commercial rentals are allowed as part of the Tait Lake Association, so you need not worry about noisy neighbors! Tait Lake is all about environmental awareness and living at peace with the wilderness and your neighbors!

**MLS# 6122990 \$575,000**

## VACANT LAKESHORE PARCELS!



### NEARLY 1500FT OF LAKESHORE ON DEVILFISH LAKE AND WILDERNESS POND!

With these 67 acres of land comes a sweet pond and wetland area for fantastic wildlife viewing! Go out and enjoy this boreal forest and lakeshore wilderness! **\$550,000 MLS#6122626**



### THE ROAD LESS TRAVELED ON DEVILFISH LAKE!

69 acres and 2360 feet of shoreline! Enjoy two islands on as part of this lakeshore parcel! Large enough to build on if you are so inclined, or just paddle the short distance from the mainland build sites to enjoy an island picnic! Come experience the Wilderness on Devilfish Lake!!

**MLS#6122624 \$600,000**



### 3800+ FEET OF PRIME LAKESHORE ON DEVILFISH LAKE, INCLUDING ISLANDS!

A Rare Opportunity to own MOST of the private land on Devilfish Lake, located up the Arrowhead Trail. This is a fabulous opportunity to own 135+ acres with of prime shoreline on Devilfish Lake! What more could you ask for in your Wilderness Lakeshore Retreat! **\$950,000 MLS#6122627**

VISIT US AT [TIMBERWOLFFREALTY.COM](http://TIMBERWOLFFREALTY.COM) CHECK OUT OUR WEEKLY BLOG AND FACEBOOK POSTS OF FUN TIMES ON THE NORTH SHORE!



# 10th Annual Lutsen Block Party!!

🎵 July 17th 5-7pm. All are welcome! 🎵  
 Let Us Show Our Appreciation! LIVE MUSIC! FREE FOOD!

Info@TimberWolfRealty.com

Call TimberWolff for  
 Your Personal Tour of  
 Homes & Land!!!  
 Local (218) 663-8777  
 Toll free (877) 664-8777

## CAMPN', HUNTN', FUN GETAWAY LAND, INVEST IN YOUR FUTURE!

Our Clients say it all, Work with us and We will work for you!

*KIM - A BIG THANKS AGAIN FOR YOUR PROFESSIONAL SERVICE! IT WAS GREAT WORKING WITH YOU & YOUR TEAM. LOOKING FORWARD TO MORE TIME ON THE SHORE - BEST WISHES - JOHN*

### GRAND MARAIS AREA

**RARE OPPORTUNITY TO BUILD YOUR DREAM HOME ON 120 ACRES OF MANICURED FOREST LANDS AND EXPANSIVE LAKE SUPERIOR VIEWS!**

There's a rough road accessing the property from Bally Creek Rd, just ten minutes west of downtown Grand Marais! Views from the TOP of Murphy Mountain are astounding, not only overlooking Lake Superior, but looking toward the North as well! Gate on property, shown by appointment only. **MLS#6122477 \$1,200,000**



### TOFTE AREA

**NEW! EXPERIENCE THE PERFECT OPPORTUNITY TO BUILD YOUR DREAM HOME ON THIS PRIME, READ-TO-BUILD LOT IN TOFTE!** Ideally situated in one of Minnesota's most scenic locations on the North Shore, this 2.28 acre property offers potential for Lake Superior views, particularly from a second-story vantage point. Nice and leveled building site is started, and year-round access with the Association plowing the main road. Fiber and Electric are located just across the road. With this accessible terrain, you can move forward confidently and turn your vision into a reality! **MLS#6125078 \$89,000**

**WELCOME TO YOUR FUTURE GETAWAY ON THE NORTH SHORE IN TOFTE!** You have plenty of space to build your dream cabin or year-round home on this 2+ acre lot. Views of Lake Superior. Located right in the middle of Tofte, you have access to bike trails and snowmobile trails and tons of inland lakes! Visit today and start your next adventure! **MLS# 6121512 \$119,000 PRICE REDUCED!**

### LUTSEN AREA

**OUTDOOR LOVERS LOOKING FOR A GREAT BASE IN LUTSEN TAKE NOTICE! TUCKED AWAY IN A GENTLY SLOPED MAPLE FOREST, THIS 5 ACRES HAS A DRIVEWAY IN PLACE LEADING TO A CLEARED BUILDING SITE AREA-READY FOR YOUR DREAM HOME!** Year-round access to the Association makes it convenient all year long. Electricity and Fiber are at the road! Enjoy a tranquil woods lifestyle with no noisy vacation rentals allowed as part of this association. A fantastic Lutsen location, don't miss out on this opportunity! **MLS# 6124429 \$125,0000**

**LUTSEN DEVELOPMENT LAND!** Located on the corner of the Caribou and South Caribou, this land is high ground and magnificent in the Fall with the mature maple forest. A Syrupe's DREAM property, make this your own homestead or develop it utilizing the new County zoning ordinance for denser development surrounded by Green Space! Year round access via County roads, and electric and fiber at road. **MLS#6120783 \$499,000**

### LUTSEN AREA

**40 ACRES A STONES THROW TO THE BRULE LAKE BWCAW IN LUTSEN!** Sweet views of surrounding lakes from the highest point of this 40 in an excellent location along the Grade Rd. Year round access, and electric and fiber are along one side of the Grade Road. Great location for a Fishing Camp and eventual home or development! Minute's to the Caribou Trail in Lutsen, or keep on going to the Ball Club Road to Devil Track Rd to Grand Marais! Mature forest, great spot. 40 acres too much? Seller's will sell the East 20 for \$169,000!  
**MLS#6120782 \$299,900**

Our Clients say it all, Work with us and We will work for you!

*Nancy & Silvia - Thank you both so very much for helping me find the perfect home for me and selling my old house so fast! You both helped me so much and made it all so efficient. You two are great! I am so happy I called you. Loving my new home and living in town. Larona*

"John was a pleasure to work with. He thoroughly addressed any concerns and made the whole process as stress free as possible. We would highly recommend his services to anyone looking for residential property in the area."  
 -Realtor.com

**FIND THOSE NEW LISTINGS FIRST!!**

**EMAIL INFO@TIMBERWOLFFREALTY.COM TO SIGN UP FOR AUTO EMAIL!**