

FEBRUARY 2025

THE NORTH SHORE'S ULTIMATE
REAL ESTATE
GUIDE





RED PINE REALTY

LOCALLY OWNED AND OPERATED SINCE 1996

14 S. BROADWAY, GRAND MARAIS, MN | 218-387-9599



VISIT OUR OFFICE TO SPEAK WITH A REALTOR. HOURS: M-F 9AM-5PM, SAT 10AM-4PM

REALTORS*: Sue Nichols, Broker • Jake Patten, Associate Broker • Jess Smith • Melissa Gregg • Mike Raymond • Alice McFarlane, Admin.

NEW LISTING



DEVIL TRACK LAKE CABIN/HOME SITE

Charming recently renovated cabin with new kitchen, 3/4 bath, Murphy bed and large decks. A mini-split provides year-round cabin comfort. The stunning views, underneath the towering pines, is classic wilderness lake front. Desirable north shore lot is ready to use with new dock with benches, solar boat lift and cover, including a pontoon boat, motor and trailer. Furnishings and newer appliances included.

MLS#6117479 **\$519,000**

NEW LISTING



CUSTOM CRAFTED LOG CABIN

Red Pine custom crafted log cabin tucked into a stand of peaceful woods. Easy access to Mid-Trail lakes and recreational opportunities. Enter the home through the light filled sunroom and enjoy the wooded views throughout. Each space has ample windows and the vaulted ceiling gives this home a more spacious feel. Enjoy a fire in the wood stove or let the forced air system do the work for you. One bedroom home plus a loft and a full walkout basement.

MLS#6117406 **\$425,000**

INLAND LAKE PROPERTIES



CARRIAGE HOUSE/ GARAGE - PORTAGE LAKE

Mid-Gunflint Trail lakeshore, 1 bedroom apartment above garage on 5.24 acres. Apartment is ready to move in. The 233 feet of shoreline is ready to launch your wilderness adventure. Portage Lake has direct access to the BWCAW by portage, good trout fishing, and no easy public access.

MLS#6116510
\$285,000



WILDERNESS PRIVACY LOG HOME - PORTAGE LAKE

Pristine 20 acres, 2500+ feet of Portage Lake shore, unique Mid-Gunflint Trail location. Surrounded by Superior National Forest & BWCA. Beautiful full-log home, 2 bedroom, 1 bath, porch, 2-car garage and gardens. Peninsula, privacy and views. Pristine location on quiet wilderness lake.

MLS#6115290 **\$849,000**



PORTAGE LAKE - MID-TRAIL LAKE LOT

Wilderness serenity surrounds you. Direct access to the BWCAW, or just enjoy it from your deck. 5.13 acre lot, 400 feet of accessible lakeshore, nice building sites amid typical boreal forest landscapes. Huge rock faced cliff guards a pond, deep forest and pristine lake views.

MLS#6116512
\$209,000



SPACIOUS GREENWOOD LAKE LOT

Spacious, wooded lot gently sloping to the waterfront. There are very nice views of the majestic Greenwood Lake, with 338ft of shoreline and 3.65 acres. Mature White Pines and a seasonal creek set this property apart. Owners have done cleanup of deadfall to open up more lake views.

MLS#6112437 **\$259,000**

www.RedPineRealty.com • info@RedPineRealty.com



VISIT OUR OFFICE TO SPEAK WITH A REALTOR. BUSINESS HOURS: M-F 9AM-5PM, SAT 10AM-4PM

HOMES AND CABINS



LARGE HOME - SILVER BAY

Five bed, 2 bath home with plenty of room and comfortable spaces. Hardwood floors, fireplace, updated appliances and new mechanical systems. The large lower level has space for projects or rec-room. Large yard and extra garage.

MLS#6115564 **\$307,900**



3 BEDROOM GRAND MARAIS HOME

Located in a quiet neighborhood and an enjoyable walk away from everything in Grand Marais! Three bedroom, 2 bathroom house has a newer roof and gutters. A brand-new deck and exterior stairs! Zoned Permanent Resident, so make this your own residence or rent it out long-term.

MLS#6114935 **\$275,000**



SINGLE WIDE TRAILER ON 2.5 ACRES

Nice, spacious, wooded property on the east side of Grand Marais with a huge yard and a single wide trailer that can be updated and inhabited or removed so you can start your own plans from scratch. Wood floored garage, fenced pet run, and a bunkhouse/tool shed included.

MLS#6117467 **\$175,000**

MARKET REPORT 2024



SINGLE FAMILY HOMES:

Median price
\$450,000

\$29,000 Less Than 2023



116
Homes Sold
21 More Than 2023

Price Range
of Sold Homes
**\$110,000-
\$1,495,000**
\$20,000-\$305,000 Less Than 2023

Median Days
on Market
17
8 Days More Than 2023

60%
of Home Listings Sold
within One Month
10% Less Than 2023

LAND SALES:

69 Parcels Sold
22 Less Than 2023

Median Price
\$89,000
\$1,000 Less Than 2023

Price Range
**\$28,800-
\$500,000**
\$1,200-\$140,000
Less Than 2023

Median Days on Market
17
20 Days Less Than 2023

56%
of Land Parcels Sold
within One Month
2% Less Than 2023

Each property is unique, especially in Cook County! While it's helpful to be aware of general trends, Red Pine agents are available to discuss your particular situation. If you are considering a property sale or a purchase in 2025, winter is an ideal time to get more information. Stop by our office; or contact us by phone or email for a private consultation.

www.RedPineRealty.com • info@RedPineRealty.com

VISIT OUR OFFICE TO SPEAK WITH A REALTOR. BUSINESS HOURS: M-F 9AM-5PM, SAT 10AM-4PM



DEVELOPMENT OPPORTUNITY

**LOON LAKE
130 ACRES**

Stunning 130-acre expanse featuring nearly 4000 feet of shoreline. Located 40 miles from Grand Marais in the popular "Mid-Trail" area with access to lodges, restaurants and outfitters. Property has mixed zoning: Lakeshore Residential with a 1-acre minimum and Forest/Agriculture Residential, with a 5-acre minimum. Potential for development, splitting off some parcels or preserving as a private retreat.

MLS#6117248 **\$1,200,000**



DEVELOPMENT OPPORTUNITY

SPECTACULAR LAKE SUPERIOR VIEWS

This could be the most impressive private land in Cook County. Situated 300 feet above Lake Superior, the views rival those at Pincushion Mountain. The 40 acres is surrounded by county & federal land with the Superior Hiking Trail running through the SE corner. Historically known as the Jagerhaus Bed & Breakfast. An opportunity to create something new after a fire in 2023. The foundation and other buildings remain. Visitors are required to be accompanied by a licensed real estate agent.

MLS#6116536 **\$600,000**



FEATURED LISTING

CHARMING GAMBREL HOME

A charming gambrel style home nestled in the woods within an easy drive from Grand Marais or Grand Portage. The house has all the comforts of home with 2 bedrooms, 1 bath, large rooms and an upper loft area. There are trails through the woods or head to the garage with plenty of space to pursue a hobby.

MLS#6116783
\$349,900

LAND/BUILDING SITES

MLS#	ADDRESS	CITY	PRICE	ACRES	DESCRIPTION
6112002	4XX-C LOST LAKE RD	HOVLAND	\$37,500	20.13	REMOTE, END OF THE ROAD PRIVACY
6113950	XXC PINE PEAK RD	LUTSEN	\$55,000	2.15	DEEDED ACCESS TO TAIT LAKE
6112701	XXB PINE PEAK RD	LUTSEN	\$65,000	2.64	SALE PENDING
6117370	L4 B1 CROSSWIND TR	TOFTE	\$70,000	2.19	SEASONAL LAKE SUPERIOR VIEW
6113513	ABC LOST LAKE RD	HOVLAND	\$139,000	79.35	SALE PENDING
6112490	XXXX-1 JACKSON LAKE RD	HOVLAND	\$425,000	39.64	PANORAMIC LAKE SUPERIOR VIEW
6113698	4177 JOSHUA RD	SILVER BAY	\$125,000	25.86	ON THE EAST BRANCH OF THE SPLIT ROCK RIVER
6116520	#7 MURPHY DR	GRAND MARAIS	\$75,000	5.37	5 MILES FROM GRAND MARAIS
6116523	#11 MURPHY DR	GRAND MARAIS	\$125,000	5.01	5 MILES FROM GRAND MARAIS
6117206	2717 COUNTY RD 7	GRAND MARAIS	\$155,000	7.50	GOOD BUILDING SITES

RECENTLY SOLD

ADDRESS	CITY	SOLD PRICE	PROPERTY TYPE	ACRES	DESCRIPTION
11 WATTERS POINT	GRAND MARAIS	\$335,000	INLAND LAKE CABIN	1.70	GULL LAKE CABIN
8334 OLD GUNFLINT TRAIL	GRAND MARAIS	\$225,000	INLAND LAKE LOT	2.00	PORTAGE LAKE LOT
21 OVERLOOK TRAIL	TOFTE	\$620,000	HOME	2.79	LAKE SUPERIOR VIEWS
130 BRIDGE RUN	LUTSEN	\$270,000	CONDO	.07	LAKE SUPERIOR VIEWS
6865 W HWY 61	TOFTE	\$295,000	HOME	2.34	SEASONAL LAKE SUPERIOR VIEWS
XXX2 OLD GUNFLINT TR	GRAND MARAIS	\$225,000	INLAND LAKE LOT	5.86	PORTAGE LAKE LOT

www.RedPineRealty.com • info@RedPineRealty.com



COLDWELL BANKER
NORTH SHORE

218-387-2131

101 WEST HIGHWAY 61
GRAND MARAIS, MN 55604

LAKE SUPERIOR



4556 CASCADE BEACH ROAD

Looking for a stunning Cascade Beach Road retreat? This Scandinavian inspired 3BR/2BA home on 200' of Lake Superior shoreline is it! Whether you dream of waves lapping on the ledge rock shoreline, the moonlight glistening on night waters, or vibrant painted sky sunrises, this property does not disappoint. The well-appointed kitchen with granite counters and maple cabinetry is open to a lovely dining room complete with a fireplace and an amazing expanse of windows framing a spectacular lake view. The living room boasts custom built-ins, a cozy atmosphere, and patio doors that open to the lakeside deck. The spacious primary bedroom is a true sanctuary, with vaulted ceiling, skylights, and panoramic view of the lake. A walk-in closet and luxury bath with 2-person jetted tub plus walk-in shower completes the suite. The property includes a 2-stall garage with an attic space.

MLS 6117163 \$1,295,000

4190 CASCADE BEACH ROAD

Nestled along Cascade Beach Road, this charming one-room cabin offers an idyllic retreat with 93 feet of private Lake Superior ledge rock shoreline. Inside, you'll find a cozy space featuring a stone fireplace, warm wood floors, and a compact loft for additional sleeping. Unwind on the inviting 3-season porch, where you can enjoy breathtaking panoramic sunrises and the shimmering waters of the lake. The ledge rock is incredibly accessible, and you will spend hours pondering life at the lake, while listening to the waves roll in, it just doesn't get any better. Ideally located in Lutsen, just minutes from golfing, skiing, hiking, and biking trails, as well as countless opportunities for fishing and canoeing, this rustic cabin is the perfect home base for all your North Shore adventures.

MLS 6117188 \$579,900



LAKE HOMES & CABINS



22 AUSTIN'S LANDING

Dreaming of luxurious log home living on over 300 feet of pristine Poplar Lake shoreline? Look no further! This exquisite custom-built home features 4 bedrooms and 4 bathrooms, complemented by a massive, attached garage. This home features a gourmet kitchen, inviting living spaces, a spacious library, and a bonus room. This property combines elegance, functionality, and breathtaking natural beauty for the ultimate lakeside living experience. With direct BWCA access, close proximity to many quality restaurants, this is a premier location.

MLS 6116128 \$1,595,000

WWW.CBNORTHSHORE.COM



COLDWELL BANKER
NORTH SHORE

218-387-2131

101 WEST HIGHWAY 61
GRAND MARAIS, MN 55604

HOMES & CABINS



845 COUNTY ROAD 14

Welcome to your private retreat nestled on 10 acres, with abundant national forest land just beyond your doorstep. This charming 3BR/2BA home offers 1,846sqft of inviting living space. Inside discover a warm and welcoming interior featuring vaulted ceilings and expansive windows. The open floor plan connects the kitchen, dining, and living areas. Cozy up on chilly fall evenings by the woodstove. The 2+ stall garage offers ample room for vehicles and workshop area.

MLS 6115762 \$425,000



SOLD

451 LINDSKOG ROAD

This delightful 4BR/2BA farmhouse blends rustic appeal with modern living, set on 20+ acres with mature trees and a serene pond. Inside, it features an open entry, spacious living room, versatile bedroom/office, and a modern kitchen with stainless steel appliances. Enjoy a cozy screened porch, large second-floor bedroom with walk-in closet, and a three-season porch with wood stove. A vintage log cabin adds historical charm, all just miles from Grand Marais.

MLS 6116800 \$499,900



LAND



257 SEAGULL LAKE RD

Exceptional Seagull Lake property with tons of privacy. 10+A with over 480' of lakeshore ranging from a sandy beach to ledgerrock outcroppings. Brand new floating dock, camper in mint condition, and 960' oversized insulated garage.

MLS 6113853 \$539,900



NEW

918 CUTOFF ROAD

Great location for your business or year-round home. Minutes away or year-round home. Minutes away or year-round home. Minutes away or year-round home.

MLS 6117320 \$129,900

PENDING

COMMERCIAL



1315 E HIGHWAY 61

Incredible commercial opportunity. Current use includes... great location!

MLS 6104280 \$995,000

PENDING

76 MURPHY DRIVE

Discover your sanctuary among five lush acres of dense forest, located minutes from downtown Grand Marais on an end of road location to increase your privacy.

MLS 6114679 \$69,900

XX BALLY CREEK RD

Exceptional 26+ acre property nestled on the scenic Bally Creek Road, with the Cascade River flowing right through it. Offering unparalleled privacy, this land directly adjoins state and federal land on three sides. The gently rolling topography will easily accommodate your planned cabin or camp site. Access the river for a perfect spot to cool off during summer months or just relax and enjoy sounds of the rushing water.

MLS 6117080 \$175,000

12XX HIGHWAY 61 W

RARE opportunity to find almost 6A of mixed use location in the heart of Grand Marais. Property features sewer and... property on Highway 61 and access off 1st Street.

MLS 6114986 \$689,900

SOLD

WWW.CBNORTHSHORE.COM



SONGBIRD REALTY MN

2025 WORLD OF REAL ESTATE

2025 is going to be interesting as we roll into so many unknowns. What is going to happen to the economy, interest rates, the real estate market as a whole? Should we buy/sell now or wait a while?

Thankfully, one thing is for certain. We're grateful to live and play in a part of the world that steadily holds its appeal and its many forms of value. It always provides a respite to us and holds its doors to the unique and wonderful wilderness open to us.



LINDA GARRITY
Broker & Owner
218-370-8313



KELLY HANSEN
Agent
612-701-4062

Reach out if you'd like to discuss all things real estate. We appreciate you!

P.O. Box 397
411 W. Highway 61
Grand Marais, MN 55604

1008 2nd St. N.
Stillwater, MN 55082

songbirdrealtymn@gmail.com
www.songbirdrealtymn.net

Where can I find Northern Wilds in **Duluth & Two Harbors?**

DULUTH

- Bent Paddle Brewing
- Burger Paradox
- Canal Park Brewing Company
- Canal Park Lodge
- Co-op: Denfeld
- Co-op: Hillside
- DeWitt Seitz
- Dove Tail Coffee
- Edgewater Hotel
- Grandma's
- Hampton Inn
- Hungry Hippie Taco
- Inn on Lake Superior
- Keyport Liquor
- Lester Park Info Center
- Lift Bridge Lodge

- Mount Royal
- OMC
- Pier B
- Sara's Table
- Super One Miller Hill
- Super One West Duluth
- The Suites Hotel

TWO HARBORS

- AmericInn
- Betty's Pies
- Candy Kitchen*
- Castle Danger Brewery
- Cedar Coffee Company
- Gooseberry Falls State Park



- Larsmont Cottages
- R.J. Houle Info Center
- Rustic Inn
- Superior Shores
- Super One
- Tom's Logging Camp

Northern Wilds is distributed freely at over 150 locations from Duluth to Nipigon, Ont. You can also subscribe or read it online at www.northernwilds.com



Edina Realty  **EXCEPTIONAL PROPERTIES**

Feel Alive
Lake Superior



SCAN HERE




Inger Andress REALTOR

Licensed in MN
218-216-7141
IngerAndress@edinarealty.com
edinarealty.com/inger-andress-realtor
Edina Realty Lutsen
5321 W. Highway 61 #6
Lutsen, MN 55612

North Shore Homes | Luxury | Lake Shore | Land | Cabin

Buying or selling, call me today!





Northern Wilds Real Estate

Covering the communities in the North Shore area from **Duluth, MN** past **Thunder Bay, Ont.**

Check in with any of our advertising Real Estate Agents for information on how to buy or sell your property.

Subscribe to our free online magazine with listings: northernwilds.com

Come for a Vacation, **STAY FOREVER.**

At Lutsen Real Estate Group, we'll help you find the perfect home on the North Shore. Whether you're looking for a cozy retreat or an investment for the future, our team's deep local knowledge and passion for the region will ensure you find a property that meets your aspirations.

Supported by Cascade Vacation Rentals, we offer unmatched insights into the vacation rental market. This expertise increases the potential for a strong return on your investment.

TURN YOUR VACATION INTO A FOREVER STAY.



MOLLY O'NEILL | Agent
(218) 370-2079
molly@lutsenrealestategroup.com



MIKE LARSON | Associate Broker
(218) 370-1536
mike@staycvr.com



SARENA CROWLEY
Agent and Co-owner



CLAIR STODDARD
Co-owner



STEVE SURBAUGH
Broker and Co-owner



Get **OUTSIDE** & Enjoy
the February **SUNSHINE**
ON THE NORTH SHORE!



Info@TimberWolffRealty.com

Call TimberWolff for
Your Personal Tour of
Homes & Land!!!
Local (218) 663-8777
Toll free (877) 664-8777

NEW AND FEATURED LISTINGS!



**NEW! A
NORTHWOODS
HOME AT THE
END OF THE
ROAD, ABUTTING
PUBLIC LAND
AND CASCADE
RIVER STATE**

PARK! At the end of Birch Dr, quiet and solitude prevail. Sweet views of Gitchee Gummi change from moment to moment, framed by a stately stand of Norway Pines. The home has been lovingly and thoughtfully updated, class-act finishes. 3 bedroom, 2 bath, top-notch kitchen. Light pours into the home. Sensible floor plan provides gathering spaces and holing up for contemplation, crafts or working remotely. Large garage with a dreamy screen porch. Wilderness vibes and wildlife are dominant themes, yet Grand Marais is about five minutes away.

**MLS#TBD
\$649,000**



**NEW! ENJOY THE
SOLITUDE IN FINLAND!**

Oldie but goodie 2 bedroom home sitting on 6.60 acres with a creek flowing through! Great potential for someone to invest some sweat equity and renovate while living there. Good bones and compliant septic system! Only 35 minutes from Lutsen and an hour from Grand Marais or Duluth.

MLS#6117512 \$159,000



**BEAUTIFUL, REMOTE 40 ACRES WITH DRAMATIC LAKE
SUPERIOR VIEWS!** Close to Grand Marais, part of Murphy Mountain, off the Bally Creek Rd. Access road in place. Subdivision possible or keep whole as a dreamy preserve and home site. Abuts miles of public land! Price reflects incredible vibe, views, solitude and grandeur! Make it your own.

\$400,000 MLS#6117131

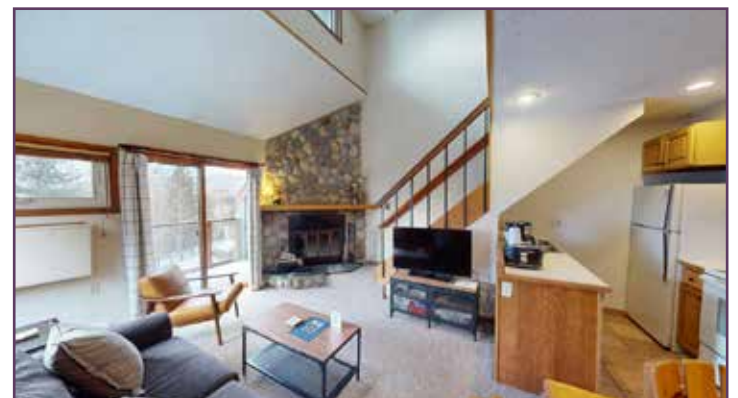
MOUNTAIN RESORT HOMES!



**NEW! VACATION
CONDO ON THE
SLOPES IN LUTSEN!**

This condo is part of Caribou Highlands Resort situated on the ski runs at Lutsen Mountains! Very functional lay out - listed as a 1 bedroom, but there is bonus loft sleeping area, full kitchen, full bathroom on each level and deck overlooking the outdoor pool and Moose Mountain, along with Lake Superior. End unit on the upper floor. Great opportunity to own a North Shore retreat free of hassle.

**MLS#6117492
\$289,900**



**FIND THOSE NEW LISTINGS FIRST!!
EMAIL INFO@TIMBERWOLFFREALTY.COM TO SIGN UP FOR AUTO EMAIL!**



Get **OUTSIDE** & Enjoy
the February **SUNSHINE**
ON THE NORTH SHORE!



Info@TimberWolffRealty.com

Call TimberWolff for
Your Personal Tour of
Homes & Land!!!
Local (218) 663-8777
Toll free (877) 664-8777

HOMES, HOMES, HOMES, READ ALL ABOUT 'EM!!



**BEAUTIFUL CUSTOM HOME ON LEVEAUX MOUNTAIN
IN TOFTE!**

Awake each morning to the beautiful sunrises over Lake Superior from the primary suite of this architecturally designed home. LeVeaux Mountain is part of the Sawtooth's range between Lutsen and Tofte, a perfect location to enjoy Lutsen Mountains Summer and Ski Resort or a nice dinner at Blue Fin Bay Resort in Tofte on Lake Superior, both just minutes away. Accommodating kitchen features lots of cabinetry and gathering space! Cozy up to the stone fireplace for your morning coffee, or a good book. This home has great spaces, you must see to appreciate all that this home has to offer! Hike, ski, or snowshoe from your front door in to the Superior National Forest, with a spur trail to cross country ski trails nearby! An outdoor enthusiasts dream home, close to everything the North Shore offers!

MLS# 6115360 \$549,000 PRICE REDUCED



**CREATE YOUR OWN
GETAWAY ON THE PIKE
LAKE ROAD!!**

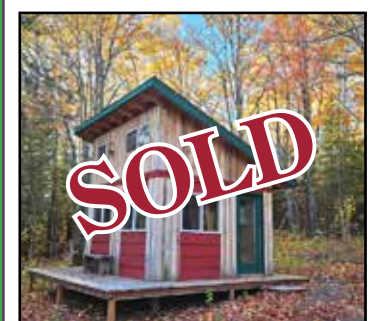
Prime location north of Babineau Corner – out in the wonderful woods of the Superior National Forest! Yet not too far to Grand Marais and all the fun and doings' there! Cabin is all about functionality and creating memories! Two bunkbeds make this place the ideal deer camp, family getaway, or open it up and make the place a studio for dreaming big and making stuff! Big 'ol deck for BBQing, bird-watching, aurora borealis viewing, or just watching the sunsets each day... heck take a nap. Spacious shed keeps all the tools and a Legitimate, tidy outhouse. North side of lot has a good build site, well away from the cabin. 13+ acres of elbow room and "plays" even larger, abutting public land on the north side. The SW corner "kisses" public land, too. Come have a look: dream a bit and get going on that vision of realigning with your goals, the plan of getting a foothold Up North!

MLS#6116947 \$199,000



**LUTSEN'S OZ! YOU'RE
NOT IN KANSAS
ANYMORE... AND THIS
DREAM IS REALITY!**

**MLS#6115382
\$495,000**



**CUTE CABINS TUCKED
AWAY IN THE WOODS
OF GRAND MARAIS!**

**MLS#6116829
\$169,000**

**VISIT US AT TIMBERWOLFFREALTY.COM CHECK OUT OUR WEEKLY BLOG
AND FACEBOOK POSTS OF FUN TIMES ON THE NORTH SHORE!**



Get **OUTSIDE** & Enjoy
the February **SUNSHINE**
ON THE NORTH SHORE!



Info@TimberWolffRealty.com

Call TimberWolff for
Your Personal Tour of
Homes & Land!!!
Local (218) 663-8777
Toll free (877) 664-8777

CAMPN', HUNTN', FUN GETAWAY LAND, INVEST IN YOUR FUTURE!

FINLAND AREA

ENJOY THE QUIET LIFE IN FINLAND! Settle in and enjoy the sounds of the woods on 15 acres. This property connects directly to snow (the **SOLD** making it ideal spot for the outdoor winter and is on a county road! The backside of the property has a pond and marsh, great area to see the local wildlife! **MLS#6116819 \$49,000**

EXPLORE THE WILDERNESS IN FINLAND!

What a great spot for your vacation getaway cabin!! This lot has great views of Ninemile Lake in the Village at Ninemile planned development. The infrastructure is already there: electricity, shared well and septic, all you have to do is hook up to it. Shared ownership of approx. 1800 ft of shoreline on Ninemile Lake, perfect for Summertime fun! **MLS#6113405 \$60,000**

AFFORDABLE LOT AT NINEMILE LAKE!

Lake view lot ready to build, with 1800 ft of shared shoreline on Ninemile Lake! The Village at Ninemile Lake has all the infrastructure ready to go with shared septic and well, electricity at the lot. County Rd 7 is a year round plowed road and the Association plows the roads within the development! This is a great opportunity to build your dream getaway!
MLS#6113406 \$60,000



OUTDOOR ENTHUSIAST'S DREAM AT NINEMILE LAKE!

Start enjoying your Inland Lake Dream! This lot was created by combining two lots, so it offers plenty of room to build your dream cabin or home with an amazing lake view and direct lake access! Shared Septic System and Well already in place, 1800ft of shared shoreline on Ninemile Lake- all that is missing is you and your plans for a dream getaway! **MLS#6113407 \$150,000**

LUTSEN AREA



NEW! SAVOR NATURE AT TAIT LAKE!

Amongst the Tait Lake Pines in Lutsen, at the end of the road, is this nearly three acre lot. Feels larger as it abuts miles of public lands to the south and dedicated open space to the east. Current owners have provided a good start with clearing, dirt-work preparation and building sites. Great Location close enough to all the fun: skiing at Lutsen Mts, golf at Superior National, paddling the BWCA, hike Eagle Mt. 2 private HOA docks provide access to Tait Lake. Come get your foothold in the cool north, living life in a Lakeland wilderness.

MLS#6116905 \$92,500

LUTSEN PARCEL- MOUNTAIN OR LAKE VIEW - YOU DON'T HAVE TO CHOOSE!

Over 5 acres of high ground overlooking Tait Lake in Lutsen. Nice views of Eagle Mountain, the highest point in Minnesota and High views of Tait Lake. Mature old growth White Pines. Year-round access, power at the build site and lake access available to Tait Lake owners via 2 HOA docks!

MLS# 6117010 \$95,000

GRAND MARAIS AREA



GREAT OPPORTUNITY FOR PURCHASING OVER 2 ACRES IN THE CITY OF GRAND MARAIS!

You don't have to give up solitude to live in the city of Grand Marais, this is a perfect fit for a home with a great location. The YMCA and school are within walking distance and just a hop, skip and jump to the Gunflint Trail to access numerous trails for hiking, biking and snowmobiling and MANY inland lakes. Visit today and start your dream of enjoying the North Shore!
MLS#6114386 \$111,000 PRICE REDUCED

GRAND MARAIS AREA



NEW! BEAUTIFUL, REMOTE 40 ACRES WITH DRAMATIC LAKE SUPERIOR VIEWS!

Close to Grand Marais, part of Murphy Mountain, off the Bally Creek Rd. Access road in place. Subdivision possible or keep whole as a dreamy preserve and home site. Abuts miles of public land! Price reflects incredible vibe, views, solitude and grandeur! Make it your own. **MLS#6117131 \$400,000**



REMOTE 80 ACRES OFF THE GUNFLINT TRAIL IN GRAND MARAIS!

Looking for a truly remote property? Here are 80 acres surrounded by federal land just south of the South Brule River and a bit west of the Gunflint Tr. Crossing the South Brule River is necessary in route to property, No formal access exists currently. Prospective buyers are encouraged to contact the US Forest Service regarding establishing a special use permit for a path once they own the property. Moose tracks are plentiful. Wild, pure forest pulses along here - undisturbed, quiet and beautiful. The northern forty acres rolls and is a mix of upland and some lowlands. Go south, begin to climb, pass some giant ole' aspens heading to some terrific views! Plenty of elbow room to expand the mind and soul. Get away from it all!

MLS#6113905 \$62,000 PRICE REDUCED

FIND THOSE NEW LISTINGS FIRST!!

EMAIL INFO@TIMBERWOLFFREALTY.COM TO SIGN UP FOR AUTO EMAIL!