

NOVEMBER 2023

THE NORTH SHORE'S ULTIMATE
REAL ESTATE
GUIDE





COLDWELL BANKER
NORTH SHORE

218-387-2131

101 WEST HIGHWAY 61
GRAND MARAIS, MN 55604

HOMES & CABINS



REDUCED 222 COUNTY ROAD 48

Quality built and lovingly maintained 2BR/2BA home with stunningly beautiful and has a top-of-the-world feel panoramic views of sparkling Lake Superior in the background. Attached 2 stall garage plus a studio building. This amazing property has over 8A, is only a few miles from Grand Marais, offers great privacy, and is centrally located.

MLS 6110412 \$699,900



REDUCED 77 FALL RIVER ROAD

Exquisite quality-built 2BR/2BA home with attached heated garage on 4.5A and only a couple of miles from Grand Marais. You will love the open concept, high ceilings, custom cabinets, and large numerous windows. There is a covered deck and patio to enjoy the surrounding woods and wildlife. Complete the package with a rustic cabin that would make a great workshop or guest cabin.

MLS 6110626 \$599,900



500 W 5TH STREET

Great location for a home or investment property! Duplex potential for rental income. Close to everything Grand Marais has to offer. Well built 3BR/2BA home ready for your special touches!

MLS 6109678 \$349,000



NEW 1815 W HIGHWAY 61

This delightful 3BR/2BA home is zoned C/I, so you can use it as your home, a VRBO or create a professional office space. It sits on a manicured .5A lot providing the feeling of country living while having the conveniences of city services.

MLS 6110943 \$399,900



5541 E HWY 61 E

Charming 3BR home on 34.5A of forested land to explore the Northwoods. Lake Superior access, which is perfect for getting out on the water and enjoy a day of kayaking.

MLS 6107983 \$339,900



PENDING

REDUCED 2393 W HWY 61

Home on 6A with seasonal Lake Superior view potential for year round views! This 2BR/1BA gem is tucked away high on the hill just west of Grand Marais.

MLS 6108705 \$349,900



PENDING

REDUCED 2390 COUNTY RD 7

Charming 3BR/1.5 bath country home tucked away on an incredibly nice 5A lot, with seasonal Lake Views, and it abuts State land to the south.

MLS 6109661 \$349,900

WWW.CBNORTHSHORE.COM



COLDWELL BANKER
NORTH SHORE

218-387-2131

101 WEST HIGHWAY 61
GRAND MARAIS, MN 55604

LAND



REDUCED ONAGON LAKE

Enjoy the natural beauty of forested lands on this affordable 1.62A lot, located at the end of the historic Gunflint Trail. 200' of lake shore, providing plenty of privacy.

MLS 6109045 \$79,900



SQUINT LAKE LOT 5

Peaceful lot, dead-end private road, with 225' of Squint Lake shoreline. Close to all the mid-Trail has to offer. Make your dreams come true.

MLS 6108303 \$124,900



GREENWOOD LAKE

Imagine calling this magnificent piece of premier Greenwood Lakeshore, YOUR private, Northwoods retreat! Very private with over 700' of lakeshore; 4+ acres; 80' of creek frontage; AND abuts Federal land.

MLS 6110312 \$539,900



CARIBOU LAKE

Build your dream home on the shores of the coveted Caribou Lake. Lot directly abuts USFS to the north, features 213' of shoreline and 3.5A of wooded land.

MLS 6108084 \$348,900

REDUCED MOOSE VALLEY RD

Large parcel on the County-maintained Moose Valley Rd! 80A of topographical, natural, and wildlife glory!

MLS 6108970 \$240,000

10 MURPHY DRIVE

Beautiful piece of land with a healthy forest, a Lake Superior view, and 10 minutes from Grand Marais. Features a screen house and solid driveway.

MLS 6108990 \$127,900

11XX HIGHWAY 61 W

Unique opportunity to find a 1A lot in the heart of Grand Marais. Directly abuts Highway 61 with commercial usage.

MLS 6108208 \$199,900

11 ALTA MIIKANA RD

Residential acreage in the heart of Lutsen ready for your north shore getaway. Close to all of the outdoor recreational activities.

MLS 6110680 \$139,900

XXX POPLAR LAKE

There are few mid-trail parcels that feature this much privacy! 10A totally surrounded by US Forest Service lands and only about a mile and a half off the Gunflint Trail.

MLS 6110281 \$69,900

REDUCED HONEYMOON TRAIL

Rural, private, 10A forested land (mixture of coniferous and deciduous trees) and close to Lutsen lakes: Caribou, White Pine, Christine, Pike, and more.

MLS 6108969 \$114,000

35 & 40 NORDIC STAR DRIVE

Incredible opportunity for a residential development in the city limits of Grand Marais! The 3.72A property offers multiple options to build on the west side of Grand Marais.

MLS 6110418 \$399,900

HWY 61 E
Beautiful 20 acres on Highway 61 E, Lake Superior shoreline. Perfect for a deer or moose hunting area. Known for hunting.
MLS 6107462 \$34,900

COMMERCIAL



12XX HIGHWAY 61 W

RARE opportunity to find almost 6A of mixed use located in the heart of Grand Marais, with city sewer and city water. This property has approximately 825' of frontage on Highway 61 and access off 1st Street.

MLS 6108209 \$789,900



1315 E HIGHWAY 61

Incredible commercial opportunity at Grand Marais City Limits Current use includes a 3BR rental unit, office, and home! Cathedral ceilings, partially finished second floor, custom designed kitchen, main bedroom with ensuite & patio access.

6104280 \$1,250,000

WWW.CBNORTHSHORE.COM



COLDWELL BANKER
NORTH SHORE

218-387-2131

101 WEST HIGHWAY 61
GRAND MARAIS, MN 55604

INLAND LAKE HOMES & CABINS

11 Poplar Creek Dr

Amazing opportunity to own a private getaway on 309' of Poplar Lake. The 4BR/5BA house is currently operating as a B&B on 7.2A with BWCA access and is only about 30 miles from Grand Marais. The BWCA, hiking trails, bike trails, and miles of ski trails including the Banadad system all provide endless opportunity for outdoor adventures. The area is rich in wildlife. Make it your ideal north woods escape or dream business or both rolled into one!

MLS 6109270

\$749,900



1376 DEVIL TRACK ROAD

Great home on Devil Track Lake with a huge metal pole barn! Two bedrooms on the main level with 1+ bedrooms in the lower level walk-out. 210' of shoreline with boat launch. Detached garage next to house and giant garage on the top of the hill (46x 60) with a shop, electric, running water (even a bathroom). This is a must see property to appreciate the value!

MLS 6108992 \$684,900

261 CAPS TRAIL

Serenity awaits you in this turn-key charming 3 bedroom, 2 bath, year-round cabin on Tait Lake. The property features 190 ft. of shoreline with 2.9 acres and is in a peaceful bay on the north side of the lake, with the Tait River gently running along the western edge of the property. Access to HOA maintained hiking & biking Trails.

MLS 6110362 \$549,900

LAKE SUPERIOR

384X HIGHWAY 61 E

Exceptionally stunning Lake Superior property, perfect for building your ultimate North Shore retreat, with over a thousand feet of shoreline! This 5+ acre lot has officially been subdivided into 2 independent lots and is part of the aptly named Paradise Beach. Imagine owning this beautiful cobblestone beach surrounded by government land.

MLS 610784 \$1,200,000



78 TROLL'S TRAIL

Affordable Lake Superior! Over 300' of shared lakeshore and over 7 acres of shared land! Great opportunity to build a cabin or year round home. Forested area, firepit picnic area, lawn area--sit back and relax while someone else takes care of the plowing and lawn care.

MLS 6108596 \$149,900



WWW.CBNORTHSHORE.COM



Here Come the Gales of November!



Get out to enjoy the last days of Fall before the SNOW FLIES!

Info@TimberWolfRealty.com

Call TimberWolff for Your Personal Tour of Homes & Land!!!
Local (218) 663-8777
Toll free (877) 664-8777

WATER, WATER, WATER AND THE BIG LAKE!



PURE, COOL, PRISTINE, SUPERIOR!

This Post and Beam Lindal Cedar Home has all the bells and whistles including 245ft of shoreline on Lake Superior! The living room's wall of glass displays each big-lake moment and the woodstove adds ambiance. The kitchen is class-act and off the kitchen is a sunroom, a good place for deep thought or a deep snooze! Plenty of room here: three bedrooms, three baths, A loft to sneak away to for a good book or everyone cuddled up for movie-night. The primary bedroom is dreamy under lofted ceiling with an ensuite bath. Down below is a spacious family room with impressive views of the lake. Big 'ol garage with stairs up to a room that is great for storage. Outside is a sprawling deck, perfect for BBQ's! The locale is a strategic basecamp for North Shore Fun: Lutsen and Grand Marais aren't far, Splitrock just down the road. Or, bring enough groceries for a month! Hole up among the cool air, pristine forest, and neighboring 3 quadrillion gallons of freshwater, better known as Superior!

MLS#6108922 \$949,000

DRAMATIC VIEWS OF GRAND MARAIS'S EAST BAY WITH GREAT INCOME! This classy, Scandinavian Modern, 2 bedroom, well-appointed unit is just a stone's throw from the lake. Enjoy the views while soaking in the sounds of the big lake! The open Kitchen and Living room give you plenty of space to enjoy meals before going out to explore, and the balcony is the perfect place to enjoy the sunrises. The spacious bedrooms give everyone space to relax. There is nothing to worry about with this property; Come use it, enjoy, and let it earn while you're off doing you.

MLS#6110340 \$339,000



NINEMILE LAKE HOME

Enjoy this Fabulous vacation or year-round home at Ninemile Lake! This 3 bedroom home doesn't disappoint with floor to ceiling windows and vaulted ceilings in the Great Room, a spacious Kitchen and even a covered porch this home has everything you need to relax and unwind! Shared access to 1800ft of shoreline on Ninemile lake and close to many inland lakes, plus direct access to snowmobile, ATV and hiking trails means you can enjoy all your favorite outdoor activities! Visit today and start planning your summer Up North!

MLS#6107181 \$289,000

PRICE REDUCED



SWEET VIEWS OF GRAND MARAIS VILLAGE, EAST BAY, ARTISTS POINT WITH GREAT INCOME!

Leave your stress behind at this East Bay Suite. With 3 bedrooms you have room for the whole family to enjoy their time on the North Shore! The Large Kitchen and Dining Room space give you space to cook large meals for everyone or walk down the street to get a quick meal at one of the close restaurants! With 500ft of shared Lake Superior Shoreline you can easily watch the sunrises or sunsets with an unobstructed view. Wander over to Worlds Best Donuts to get a yummy snack or stop at the Beaver House to get bait to catch the night's dinner. The options are endless! And while you are away this Suite will pay for itself in Rentals! Check it out today! **MLS#6110341 \$403,000**

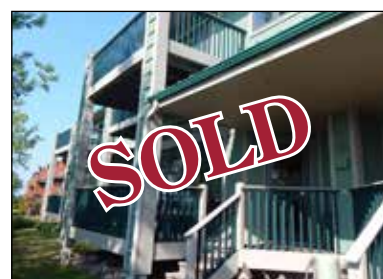


SUGAR MAPLE DELIGHT ON THE SHORES OF DEERYARD LAKE!

MLS#6109862 \$755,000



**FREI LEIF HAUS
MLS#6100212 \$699,000**



PERCHED ABOVE LAKE SUPERIOR, ENJOY THE SOUNDS OF THE WAVES FROM THIS ASPENWOOD HOME!

MLS#6108924 \$499,900



FIND THOSE NEW LISTINGS FIRST!!

EMAIL INFO@TIMBERWOLFFREALTY.COM TO SIGN UP FOR AUTO EMAIL!



Here Come the Gales of November!



Get out to enjoy the last days of Fall before the SNOW FLIES!

Info@TimberWolfRealty.com

Call TimberWolff for Your Personal Tour of Homes & Land!!!

Local (218) 663-8777

Toll free (877) 664-8777

HOMES, HOMES, HOMES, READ ALL ABOUT 'EM!!



NEW! STARTER HOME IN SCHROEDER!

Tucked away on the hill of the Cramer Road in Schroeder is this cute 2-bedroom home. With a large yard and 3+ acres to explore, you will have plenty of space to enjoy the seasons. Walk inside from the large deck overlooking the yard and enjoy the open layout. From the entryway giving you space for all your seasonal gear (that means no mud in the house!!) to the open Kitchen and Living room with a ton of natural light, you will be able to relax and unwind at the end of the day. Even a Large Deck overlooking the yard and detached garage! Located just a minute drive from Highway 61 you have easy access to all your favorite places like Schroeder Bakery or Temperance River. Or travel further on the Cramer Road to many inland lakes and spend the day fishing! All that is missing is you! **MLS# 6111108 \$285,000**



UNWIND IN SILVER BAY!

Do you crave space? Look no further! Including a new furnace and some appliances, this home has been taken care of and has plenty of room for everyone! 3 bedrooms gives you the opportunity to have the crafts room you have always wanted, or maybe a nice home office? The options are endless! The Kitchen has a ton of cabinet space, plenty of room for all your cooking tools and the Living Room has a ton of natural light from the large windows. Or walk outside to enjoy the landscaping. From the Peonies adorning the front yard to the large backyard with more landscaping and Rhubarb! There's enough yard here to throw up a screen porch, a firepit, games area. And don't forget the large 2 car garage to keep your cars out of the weather and store your outdoor gear! The place is move-in ready. Just show up, unpack, and get to living that new life!

MLS# 6109171 \$209,000



RUSTIC CABIN LIVING NEAR PIKE LAKE!

MLS#6110497 \$199,900



ENJOY SUNRISES AND SUNSHINE IN SCHROEDER

Walk into the small footprint cabin and relax next to the woodstove giving you that extra ambiance or cook a quick meal in the kitchen while planning your next day adventures. The loft area is large enough to have your bed and a quiet reading nook. Walk out enjoy the views of the Boreal Forest and distant Lake Superior! Outside you can enjoy all the spring/summer/fall days under the covered porch, perfect for BBQ's or just listening to the birds sing. Full basement accessed outside gives you plenty of space to store all your seasonal gear. This home sits on 4.90 acres giving you plenty of space to create your own trails and places to explore. Located close to Sugarloaf Cove, the Superior Hiking Trail and Temperance River State Park! Get a quick meal at the Schroeder Bakery and take it down to the beach by the mouth of the Temperance to enjoy the sounds of the lake. Or just hideaway at your Up North Cabin and enjoy having the stress melt away.

MLS#6109669 \$269,000



HOME ON A HILL IN THE SILENT WOODS!

Up the Sawbill Trail in a vast stretch of Superior National Forest is a home on a hill. Built by the current owners it is a home of simplicity on 40 acres! Windows are oriented to take in warm winter sun and sweeping views. A sweet deck overlooks it all, including lady slippers in early summer and a pond at the bottom of the hill, spring fed and pure. It's made for off-grid living with solar panels and a back-up generator. Inside, the home is about comfort and oneness with its locale: indigenous stones surround the capable wood stoves, beams from a pioneer horse-barn support the roof, cabinets from a caring neighbor provide character. Propane heat is available when the wood stoves cool. Two bedrooms and additional rooms for the office or your vision. The earth sheltered home includes a root cellar to store the food: perhaps blueberry jam from your own berries. A three-season porch is just the thing when the skeets are hungry or a place to nod off after harvesting the garden. Explore in all directions: flyfish or head out on a mountain bike along miles of forest roads. BWCA entry points are close. Tofte and Lutsen are nearby. Or stay home and enjoy the quietness the woods provide!

MLS#6110010 \$379,900



VISIT US AT TIMBERWOLFFREALTY.COM CHECK OUT OUR WEEKLY BLOG AND FACEBOOK POSTS OF FUN TIMES ON THE NORTH SHORE!



Here Come the Gales of November!



Get out to enjoy the last days of Fall before the SNOW FLIES!

Info@TimberWolfRealty.com

Call TimberWolff for Your Personal Tour of Homes & Land!!!
Local (218) 663-8777
Toll free (877) 664-8777

CAMPN', HUNTN', FUN GETAWAY LAND, INVEST IN YOUR FUTURE!



FINLAND AREA

BUILD YOUR VACATION GETAWAY AT NINEMILE LAKE!

.18 acres with 1800ft of shared shoreline on Ninemile Lake! With septic, water and electric all on site all you have to do is hook up to it! Easily start your project and be able to enjoy your time Up North!
MLS#6107242 \$60,000

LAKE VIEW LOT! GREAT OPPORTUNITY TO BUILD A LAKE HOME AT THE VILLAGE AT NINEMILE!

Fish the day away from the 1800ft of shared shoreline on Ninemile Lake or travel to one of the many inland lakes that are close by. Snowmobile from your front door! All the important infrastructure is there: Septic, water and electricity- all you have to do is hook up to it! Start making your dream Up North home a reality today!
MLS#6107243 \$60,000

START ENJOYING YOUR INLAND LAKE DREAM AT THE VILLAGE AT NINEMILE!

This .60 acre lot was recently created by combining two lots so it offers plenty of room to build your dream cabin or home with an amazing lake view and direct lake access! Great opportunity for the outdoor enthusiast with snowmobile and ATV trails right outside your door! 1800ft of shared lake frontage on Ninemile Lake and infrastructure in place for Septic, Well and Electricity, all you have to do is hook up to it. You will be ready to relax and unwind before you know it!
MLS#6107241 \$150,000

SILVER BAY AREA

ENJOY THE VIEWS FROM ABOVE! Imagine waking up every morning to a view of Lake Superior. This property could give you that! Located at the top of a hill you could be overlooking Lake Superior while drinking your morning coffee! With a driveway in place (needs a little TLC) and a beautiful view, you have the first steps in place to build your dream! We think the best building site is right on the hill, but you will have to explore to decide for yourself. Great location just outside of Silver Bay giving you close access to all the Hiking, Biking and ATV Trails. Or maybe you just want to enjoy the abundant wildlife that also wanders around the 9-acre parcel. All that is missing is you!
MLS#6108926 \$108,000

TOFTE AREA

LAKE SUPERIOR VIEW LOT IN THE MIDDLE OF TOFTE!

This 3.61 acre lot is a dreamy location to build your North Shore home. With multiple south-facing building sites giving you great views of Lake Superior, electricity conveniently located at the road and Year-round access possible thanks to the Home Owner's Assn. You will be able to build your getaway and enjoy it all year long. There is quick access to snowmobile trails, many hiking trails and Cross Country skiing all close by. Visit today and make your dream of a North Shore Home a reality!
MLS#6107193 \$149,900

LAKE SUPERIOR VIEW LOT IN TOFTE!

This is a rare parcel with tons of possibilities! The land borders Federal to the North giving you plenty of room to wander the woods or you could just walk down your driveway to get to Ray Berglund Wayside State Park and enjoy the MN Dot Lake Superior shoreline across the Highway. Nice mixture of trees, exposed rock, and beautiful views. This parcel is unique - long and narrow, with lots of options of where and what to build. Great location with Lutsen Mountains Ski Area is just a minute drive away, along with Superior National Golf Course and the paved Gitchi Gami State Bike Trail is across the highway. Build your cabin and enjoy the North Shore - maybe work remotely or move up here!
MLS#6107607 \$99,000

LUTSEN AREA

NEW!! 49+ ACRES WITH 1600 FT OF SHORELINE ON BIGSBY LAKE IN LUTSEN!

Have the wilderness at your fingertips and STILL have room to create your own Up North Home Base for all your favorite outdoor activities! Watch the wildlife all around you as you sit back and let the stress of the world melt away. Beautiful setting with mature cedar trees and a mixed forest, perfect place to enjoy nature and wildlife. Ward Lake public access is nearby, take the walking path carrying your canoe and Caribou Lake Public Landing is only a few minutes driving distance, great place to spend the day fishing! This is the Ideal parcel to build your North Woods adventure base and create multiple trails, take a snowmobile or ATV ride or just relax by the lake, perfect for an outdoor adventurer!
MLS# 6110674 \$249,900

START UP AT TAIT LAKE! Are you ready to have your own place on the North Shore, Build the cabin or home of your dreams and start creating memories? Located in a great location near Tait Lake, away from the hustle and bustle this lot already has the driveway and building site in place. Deeded access to both boat launches you will be able to fish the day away with ease. And Lutsen is just 20 minutes away for Golfing, Skiing, Restaurants and Shopping. Eagle Mountain is only 10 minutes away for a hike to the highest point in Minnesota!
MLS#6108876 \$67,000

GRAND MARAIS AREA

GO WITH THE FLOW ALONG THE CASCADE! It's not often you find large parcels of land away from it all like this 27 acres! A river runs by it, the Cascade to be precise. Previous owners provided a solid start: brand new cabin, a portion of the property complete with a room abn... **SOLD** ...lands out the basic needs. Over by the river, is a site powered, wee cabin. Everything you need to get started! Diverse mix of trees and lots of upland. This is way-out there country, yet Grand Marais is close enough for easy resupply, a brew, take in some music. Access to Pike Lake is just over yonder. Snowmobile, hiking and cross country ski trails are handy!
MLS#6108873 \$164,900

RARE OPPORTUNITY IN THE CITY OF GRAND MARAIS!

Large parcels don't come up for sale very often, especially within the city of Grand Marais, this is your opportunity! There are many possibilities to develop this 2+ acre parcel, The Property was just surveyed and there is a designated 33 ft wide easement on the east side to build a road to this parcel from E 5th ST. The location couldn't be any better with schools, YMCA, and the Community center within walking distance. Easily get to the Gunflint Trail, just a block away, and spend the day fishing at one of the many close inland lakes. Hiking trails, Biking trails, Cross Country Ski Trails and Snowmobile Trails are just a minute away, you will always have access to the different seasons adventures. Visit today and start planning your getaway Up North!
MLS#6107788 \$179,900

SCHROEDER AREA

NEW!! 25 ACRES OF BEAUTIFUL BOREAL WOODS JUST SOUTH OF SCHROEDER NEAR SUGARLOAF COVE. Great mix of birch, aspen, and conifers. Not to mention the neighbors: fox, moose, deer, wolves, woodpeckers! Come and get it!
MLS#6111096 \$109,900



CHECK OUT OUR NEW LOCALLY CRAFTED TIMBERWOLFF WEBSITE, SEARCH ALL MLS LISTINGS AT TIMBERWOLFFREALTY.COM

SMART. KNOWLEDGEABLE. ENGAGED.

Hands down, you are in the best care.



INGER ADDRESS, Agent

Inger is the third generation of Real Estate Enthusiasts in her family. Starting from when she was young, Inger would spend all of her childhood summers with her grandmother in Lutsen. Today, Lutsen is home. Because of her active involvement over the years in the Cook County area, Inger has a historical understanding and a keen sense of the North Shore real estate market.

(218) 216-7141

inger@lutsenrealestategroup.com



MOLLY O'NEILL, Agent

Professional experiences in banking, finance, telecommunications, and tourism marketing formed a background well suited to real estate. For many years, Molly has walked through the process of building, buying and selling homes of her own in the Lutsen area. Molly knows her deep roots, extensive understanding and love of exploring the North Shore makes her a rich resource for all the opportunities to connect people with the properties they are dreaming of.

(218) 370-2079

molly@lutsenrealestategroup.com



STEPHANIE DRISKELL, Agent

Originally from the Iron Range, Stephanie was always drawn to the North Shore. She and her partner are putting their construction skills to work as they build their dream home in Schroeder. She is happy to share her experience with buyers and sellers as they navigate their own real estate journey.

(218) 206-5374

stephanie@lutsenrealestategroup.com



MIKE LARSON, Associate Broker

For three decades, Mike has played a critical role in the development of the tourism, lodging and the real estate industry in the Lutsen and overall Cook County area. Today, Mike's focus is working with his real estate team and awesome agents, representing buyers and sellers.

(218) 370-1536

mike@staycvr.com



SARENA CROWLEY, Agent

Sarena, like Steve, is an owner of Cascade Vacation Rentals (CVR) and is an agent for the Lutsen Real Estate Group, a sister company CVR owns. While not active as an agent on a daily basis, Sarena has a big job overseeing the daily operations of Cascade Vacation Rentals, Cascade Maintenance Services (CMS) and North Shore Laundry. All this expertise and knowledge serves a benefit to our real estate agents and the clients we serve.



STEVE SURBAUGH, Associate Broker

Steve serves as the Associate Broker for the Lutsen Real Estate Group and helps navigate real estate operations and his agents with his extensive working knowledge of the area. Steve is the owner of Cascade Vacation Rentals, North Shore Laundry and serves on the Board of Directors of the Grand Marais State Bank, Boreal Access, Cook County Revolving Loan Fund and the Lloyd K Foundation. Steve is also the President of the Cook County EDA and remains active as a senior business advisor to the Northland Foundation's Entrepreneur Fund.

RECENTLY SOLD AND LISTED PROPERTIES



109 FOOTHILL BLVD // LUTSEN

Simplicity and comfort nestled into the hills of the maple belt forest overlooking Caribou Lake.



COUNTY ROAD 7

Well-appointed three bedroom home on eight acres near Grand Marais.

NEW LISTINGS OF THE LUTSEN REAL ESTATE GROUP



LAKE SUPERIOR LOT // LUTSEN

Outstanding views from the 1.1 acre 202' Lake Superior parcel is now available for sale. Located between Lutsen and Tofte this parcel provides the best of locations. Road access is already in place making the build process so much more cost effective and convenient. This parcel sits adjacent to the Gitchi Gami Bike Trail and of course is super convenient to Superior National at Lutsen Golf Course, Lutsen Mountains, Superior Hiking Trail, XC ski trails at Oberg Mountain, Single Track Mountain Bike Trails at Britton Peak and so much more.

MLS 6110924 // \$399,500



ONAGON LAKE // GUNFLINT TRAIL

Not too often does a private lake vacant lake shore parcel become available for sale. Located just past Seagull Lake on the historic Gunflint Trail, this private parcel on Onagon Lake covets nearly 3 1/2 acres and over 400' of shoreline. It is a perfect base camp location for BWCAW year-round adventures notwithstanding serving as its own private destination. The vacant parcel is adjacent to an award winning designed home by David Salmela. Parcel is surveyed with soil tests completed with several nice build sites and access to lakeshore.

MLS 6109158 // \$189,900



WE ARE VACATION
RENTAL EXPERTS

Looking to buy a property for a vacation rental? Through our sister company, Cascade Vacation Rentals, we have gained incredible knowledge about what North Shore visitors are looking for. We are happy to use that information to help guide you in purchasing a property that is not only a good fit for you, but will also increase your chances of high rental income.

CASCADEVACATIONRENTALS.COM // (877) 415-8974



REALTORS®: Mike Raymond, Broker • Jake Patten, Assoc. Broker,
 Jess Smith, Realtor • Sue Nichols, Assoc. Broker • Gail J. Englund, GRI
Red Pine Realty • (800) 387-9599
 (218) 387-9599 • Fax (218) 387-9598 • info@RedPineRealty.com
 PO Box 938, 14 S. Broadway, Grand Marais, MN 55604



LAKE SUPERIOR PROPERTIES



WATERFRONT COMMERCIAL PROPERTY

Beautiful waterfront commercial property in downtown district of Grand Marais, which includes 2 apartments overlooking Lake Superior, and a retail/rental business. Also included in the sale is a 5 acre parcel on County Road 7, with a 52' x 42' warehouse for boat and other inventory storage and deliveries.

MLS#6103262 \$1,950,000



LAKE SUPERIOR PRIVATE RETREAT

Unique private place - a park-like preserve all your own. The 2000 ft of rugged lakeshore and dense boreal forest create a place to immerse oneself in the magic of the ancient shore. The 19 acres is accessible by a 1/4 mile of boardwalk and deck overlooks. Dramatic points protect the private views. Power and phone are waiting for your choice of building sites.

MLS#6107927 \$1,750,000



LAKE SUPERIOR HOVLAND HIDE-AWAY

Privacy and sunset views fill this warm 4 bedroom, 2 bath home on Big Bay. Home has been well cared for and provides the comforts and attributes of a classic North Shore Retreat. Stone fireplace and handsome wood mantle, custom kitchen cabinets and granite counter tops, with charming old wooden boat hanging over the great room. Floor to ceiling windows bring the moods of Superior into the living space. Large 4-season porch with wood stove and adjoining cedar sauna.

MLS#6109902

LAKE SUPERIOR PROPERTIES



OPPORTUNITY KNOCKS

Amazing land situated on Chicago Bay at the mouth of the Flute Reed River. Comfortable home with beautiful views. Guest cabin currently operated as a vacation rental. A 900 square foot garage with insulated space on 2nd level. Main home has 3 bedrooms, full bath on each level and a 3-season porch overlooking the lake and river. House needs wall coverings in the main floor bedroom and 2nd level. Home is built to high quality standards with in-floor heat, top of the line windows, water from the lake with UV, triple filtration and a circulating heat pump providing hot water on demand.

MLS#6110397 \$924,900 PRICE REDUCED!



**PRIVACY ON LAKE SUPERIOR
 - NEW STRUCTURES IN PLACE**

Deeply wooded lot on Big Bay has great views of the lake and hills along the coast. Privacy on the 500ft of shoreline with its own long driveway from Hwy 61 and a buffer of state land. Charming guest cottage is being completed with flowing, multilevel decks and a unique privy. You have a place to start while you finish renovation of an old cabin that sits right on the shore by variance from the county. The contractor is ready to go.

MLS#6110389 \$549,000

INLAND WATER PROPERTIES



DEVIL TRACK LAKE HOME

Three bedroom, 3 bath home on 2 acres of dense forest and 200 ft of shoreline on coveted north shore of the lake. Quality-built 1981 home has many recent updates, including windows and roof. Updated kitchen with new slate tile floors, granite countertops, cabinets and appliances. Open floor plan on main floor with hardwood floors, lofted ceilings, large windows and expansive deck accessed by 2 patio doors. Primary bedroom has lake views and a private bath with walk-in closet. 2-car attached garage and a detached 2-car garage. Dock and lift included.

MLS#6108491 \$599,000 PRICE REDUCED!

INLAND WATER PROPERTIES



LOON LAKE TURN-KEY LOG HOME

Stunning, brand new, turn-key log house on Loon Lake! Many convenient amenities make this property user friendly, and suitable for rental or residence. The 746 square feet of living space is meticulously detailed with textures and tones that draw your attention while also calming your busy mind. Enjoy this property year-round as the destination itself, or as a gateway into the vast wilderness that surrounds it. Appropriately set on Solitude Drive, this is the perfect place to escape the chaos of life and be still. Book a showing before the snow flies, and nestle in for the winter at your own Gunflint Trail lake property.

MLS#6110987 \$589,000



GREENWOOD LAKE PANORAMIC VIEWS

Greenwood Lake property offers the best of lake life and the north woods experience. Vaulted living area, open kitchen and dining area offer unobstructed lake views from nearly every angle. Cabin has 3 bedrooms with ample closet storage. Clear railing system on the deck allows you to take in the panoramic views. A short walk down to the wind protected harbor & swimming beach. Off-grid living with amenities of solar power, custom water collection system and propane.

MLS#6108310 \$549,000



HOME ON CLEARWATER ROAD

Wonderful property just a few miles from the center of the Gunflint Trail, with a gorgeous inland lake view! Houses on Clearwater Road don't come available often! Single level house is suitable for year-round use, with a wood fireplace and 4-season porch. Detached garage is on a dry slab with ample workbench space and storage. Home is well-loved and could be your own north-woods getaway and spring board for endless enjoyment.

MLS#6109927 \$449,900

INLAND WATER PROPERTIES

TOM LAKE RETREAT CABIN

Drop in your boat and turn on the inverter to power up your updated and turn-key cabins! Property has been meticulously maintained. Solar powers all the comforts of home.



Behind the main cabin, is a 2-bedroom bunkhouse with half-bath and game room. Internet and electric are coming to Brumbaugh Rd in 2025! Maintenance-free steel roofing on all 5 buildings, including sauna, tool shed & heated outhouse! Nearly 4 acres and over 300 feet of shoreline on Tom Lake.

MLS#6108657 \$399,000



TOM LAKE PEACEFUL HAVEN

A beautiful drive through the forested hills of the Hovland area takes you to this peaceful haven on Tom Lake. A total of 32 acres on each side of South

Tom Lake Road. North half has 660 feet of shoreline with a mixture of deciduous and evergreen forest. Southern half slopes gently up from the road and is a mature deciduous forest. From the lakeshore, enjoy summer sunsets to the northwest or peaceful morning sunrises.

MLS#6108188 \$225,000

POPLAR LAKE LOT

Over 300 feet of private shoreline on Poplar Lake and just under 2 acres of land. Lots of spruce, cedar, tag alder and diamond willow creates a haven for moose and other wildlife. Bring rubber boots and a camera to check this one out. Beautiful shoreline in a friendly neighborhood!



MLS#6108233 \$199,000



TOM LAKE LOT

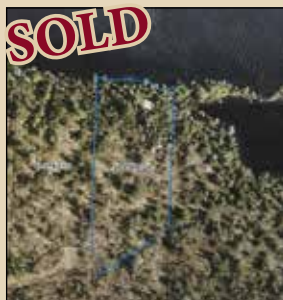
There really are places that are still wild, with clear air and starry nights away from the sounds of civilization. If you are willing to drive the extra mile,

you will enjoy this untouched lake lot with 214 feet of shoreline on a fairly even heavily wooded lot. Property has been surveyed and staked. Brumbaugh Rd is private with a public landing at north end of the lake.

MLS#6108312 \$127,000

GATED PLAT LOT ON TOM LAKE

Beautiful lot in a small private gated plat, nicely wooded with maples, pine and birch. Stubbed in driveway and marked/flagged build site. Tom Lake is an excellent fishery with walleye, bass, northern and perch. It is ready for you to clear your site and build.



MLS#6109610

COMMERCIAL

RENEW/BUILD A BUSINESS IN GRAND MARAIS

1.27 commercial zoned acreage in Grand Marais. Rent space potential. Includes a property with some good bones! Great location for many types of ventures! Make an offer and build your business in a popular tourist area! **MLS#6107939**

HOMES & CABINS



NORTHWOODS SANCTUARY HOME

Stunning home tucked away on 89 gorgeous acres. Includes 2-bedroom, 2-bath home with all the privacy features, maintenance-free siding, a metal roof, vaulted ceilings with pine tongue and groove, a stone fireplace and custom hickory cabinets. A Northwoods sanctuary, with views all around. Solar system leaves you with minimal utility bills. Power & broadband are slated to arrive.

MLS#6109126 \$495,000 PRICE REDUCED!



EFFICIENT 2 BED 2 BATH HOME ON 4 ACRES

Well insulated and heat efficient home on 4+ wooded acres has all the amenities you need while maintaining a relatively compact footprint. A convenient detached garage will keep your vehicles and tools covered, and give you space for extra storage or doing small building projects out of the elements. Property is bordered by several hundred acres of Federal Land, making this a perfect wilderness homestead just 20 minutes from downtown Grand Marais.

MLS#6110786 \$379,000



CHARMING HOME ON 19+ ACRES

Located only 25 minutes from Grand Marais. This 1 bed 1 bath home features a large loft with ample storage, open concept floor plan. Home has in floor heat and a large woodburning stove that is sure to take the chill out of the air in the cooler months. Close to Judge Magney State Park, Lake Superior a short drive away. Privacy abounds and miles of backroads to explore!

MLS#6111172 \$350,000

HOMES & CABINS



RANCH HOUSE ON 20 ACRES

Uniquely designed 2 bedroom, 1 bathroom house on 20 acres provides the perfect balance between convenience and rugged. You'll love the traditional characteristics of dark, rough-sawn paneling and timber beams, combined with light toned walls that reflect the southern sunshine. The kitchen, dining and living room all face inward toward the fireplace. Seven acres of wildflower strewn pasture for raising livestock. Includes a barn with a garage stall, room for horse tack and tools, a workshop and a studio upstairs.

MLS#6110203 \$309,990 PRICE REDUCED!

COZY OFF-GRID CABIN ON 83 ACRES

Well-loved, kit log cabin perched atop 83 acres, bordered by MN State land. Being this deep in the woods, it is a treat to catch a glimpse of Lake Superior on a clear day from the south facing bedroom window. Interior is accented by beautiful diamond willow railings and custom ironwork. Cozy off-grid cabin with propane lights, refrigerator and cooking range reduce utility expenses.

MLS#6110432 \$289,000



KELLY'S HILL RD 5+ ACRES

A short 15 min drive from Grand Marais sits this beautiful 5+ acres! With plenty of room to expand, this property features raised garden beds and trails throughout!

With some selective clearing you could open it up to a lovely view of Lake Superior! Power and high-speed internet are on site along with a 12x20 storage shed. Superior Hiking Trail access just down the road.

MLS#6110837 \$150,000

Serving buyer's and seller's needs in Cook & Lake County.

We'd Love to help you sell your property, or if you're buying we would like to make your North Shore dreams come true.

RIVER/CREEK FRONTAGE



40+ ACRES ON COUNTY RD 14

Over 40 acres with a creek running through and 1300ft of County road frontage. Very nice potential building sites in this parcel. West and south

property boundaries are abutted by Federal land. Zoned FAR-3, could be subdivided, or you can maintain the elbow room with your own beautiful, private homestead.

MLS#6108229 \$330,000

MAGNEY PARK AREA RIDGE TOP WITH LAKE SUPERIOR VIEWS

Remote and secluded "80" acre property has high ridge views of the big lake. Property adjoins Judge C.R. Magney State Park. Easements in place for road access on old logging trails. Ultimate privacy! Mixed, mature forest of evergreens and maples, creeks and pond. Walking distance to Brule River. Many unique aspects to this beautiful recreational property.



MLS#6107790 \$129,000

REMOTE RETREAT

70-acre tract has varied terrain and variety of forest. Property split by Sundling Creek which flows into the Cascade River. Easements and Forestry Permits in place for seasonal access. Remote means ATV/UTV-only drive in and out. It's possible to walk in from the SHT on the south. Adjoins



thousands of acres of federal forest lands. Walk-in easement to Cascade River.

MLS#6108890 \$68,000

PENDING! LARGE PARCEL WITH CREEK, LOST LAKE DEEDED ACCESS

Nice 41 acre parcel with good slope to southern exposure, frontage on Mohns Creek with ponds, and deep forest. Easy access with frontage on Camp 20 Road. Deeded private lake rights to Lost Lake. A remote escape with easy access and soon to have power and broadband access.

LAND/BUILDING SITES

MLS#6110761 \$57,900 RARE 40 - LUTSEN CARIBOU TRAIL

Unique 40-acre parcel surrounded by Federal land in the Superior National Forest. It has a 1/4 mile of frontage on the Caribou Trail north of Lutsen, a year-round, county maintained gravel road (black topped to within about 2 miles). Build your home or retreat here. Power and Broadband are accessible. The woods are deep and the property has a variety of trees and elevations.



MLS#6110287 \$174,900



15 ACRE CARIBOU HILLSIDE MAPLE LOT

Beautiful 15+ acre wooded lot, covered in Maple Forest perfect for making your own maple syrup! In the fall this area is ablaze with stunning colors. Caribou Lake Public Access

nearby, Superior Hiking Trail down the road, Lutsen Mountains Ski Resort, Gitche Gumee bike trail and all the things the North Shore has to offer.

MLS# 6110960 \$149,000

LAND/BUILDING SITES

LARGE, REMOTE ACREAGE - PRIVATE LAKE RIGHTS

This over 80-acre tract has some high ground with views of the hills to the south. Good road access. Some young planted pine trees. It adjoins a Private Conservation Easement area. The property is part of a private association with lake rights to Lost Lake, a limited access lake with shared carry-in landing from which you can launch your canoe or kayak.



MLS#6103975 \$74,900



MAPLE FOREST LOT

Beautiful 5+ acre wooded lot, covered in Maple Forest. In the fall this lot will be ablaze with stunning colors. Caribou Lake Public Access nearby, hiking trails, Lutsen Mountains Ski Resort, Gitche Gumee bike trail and

all the things the North Shore has to offer.

MLS#6108144

40 ACRES- STONES THROW TO TOM LAKE

40 acres with an easy walk to the Tom Lake boat landing. Year-round road to within 1000 feet, power is possible here. Driveway easement granted to build shared access. Many great building sites. Easy access to trails and other lakes.



MLS#6095114 \$60,000

WOODED 64 ACRES - ACCESS TO PRIVATE LAKE

This large wooded retreat property is within walking distance to a shared landing on Lost Lake - a private access lake. Good road access and many nice places to build a cabin. Privacy on top of restricted private road

access makes this a unique opportunity for wilderness seclusion.

MLS#6103974 \$59,900

PEACEFUL TAIT LAKE PINES

You'll appreciate the private & peaceful location in Lutsen, MN. Complete with its own hiking trails, outstanding views, maintained roads, year-round accessibility, access to power, calm and serene overall vibe. Deeded lake access to Tait Lake! Additional lots available.



MLS#6106368 \$55,000 1.93 acres

MLS#6098276 \$54,900 2.53 acres



GREAT LOCATION FOR HOME OR CABIN

Just minutes west of Grand Marais on a black-top county road with power at the site, Broadband nearby. Five acre parcel with southern exposure. Potential Lake Superior views. Very affordable building site!

MLS#6096700

LAND/BUILDING SITES



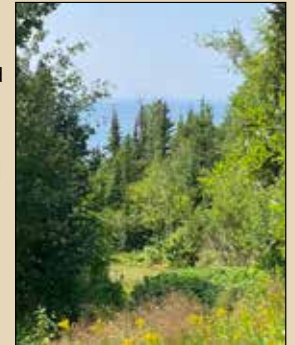
REMOTE ACREAGE, ADJOINING FOREST LANDS-PRIVATE LAKE RIGHTS

43 acre tract has adjoining federal land and state park within walking distance. Good road access, with an old "logging road" into the property. Property is part of a private association with lake rights to Lost Lake, limited access lake with shared carry-in landing.

MLS#6103979 \$46,900

BIG LAKE VIEWS

One acre lot with views of the Big Lake!! This is the location of the old 1 room Colville School House! The driveway has been started!! Take a short walk across Highway 61 to the Lake Superior shoreline owned by the State of MN and enjoy a beautiful & private feeling beach! Property is a non-conforming lot and unbuildable. Could be used as a camping spot.



MLS#6109904 \$45,000



BRULE VALLEY LOTS

These 3, 40+ acre adjoining parcels are connected to a vast amount of Federal and State land, and are the perfect place to get away. Everyone needs a quiet respite, and this place provides that wholly. Towering Pines, poplar, birch and evergreens, ponds, creeks and rolling hills.

MLS#6102969 \$43,000 - Lot B PENDING
MLS#6102971 \$46,000 - Lot C PENDING
MLS#6102970 \$44,000 - Lot D PENDING

REMOTE PEACE & QUIET, PRIVATE LAKE ACCESS

Hide away in this dense forest, with miles of remote trails to explore, and private lake access to Lost Lake. Twenty acres of rolling topography and nice building sites for your cabin retreat. The area is part of an association with gated access to Lost Lake, a limited private property lake with no public access, and great trout fishing and wildlife viewing!



MLS#6098653 \$39,900



REMOTE, END-OF-THE-ROAD PRIVACY

Deeply wooded 20 acre parcel, remote with nice southerly exposure and creek frontage on Mons Creek, a trout stream. Deeded access to Lost Lake, a private access lake with limited private property. A place

to fish, listen to loons and watch the sun set. Private area is gated and maintained by association. Main road access is seasonal. Broadband/power slated to come soon.

MLS#6098654 \$38,900