

JULY 2023

THE NORTH SHORE'S ULTIMATE
REAL ESTATE
GUIDE





REALTORS®: Mike Raymond, Broker • Jake Patten, Assoc. Broker
 Jess Smith, Realtor • Sue Nichols, Assoc. Broker • Gail J. Englund, GRI

Red Pine Realty • (800) 387-9599



(218) 387-9599 • Fax (218) 387-9598 • info@RedPineRealty.com
 PO Box 938, 14 S. Broadway, Grand Marais, MN 55604



LAKE SUPERIOR PROPERTIES



WATERFRONT COMMERCIAL PROPERTY

Beautiful waterfront commercial property in downtown district of Grand Marais, which includes 2 apartments overlooking Lake Superior, and a retail/rental business. Also included in the sale is a 5 acre parcel on County Road 7, with a 52' x 42' warehouse for boat and other inventory storage and deliveries.

MLS#6103262 \$1,950,000



LAKE SUPERIOR PRIVATE RETREAT

A unique private place - a park-like preserve all your own. The 2000 feet of rugged lakeshore and dense boreal forest create a place to immerse oneself in the magic of the ancient

shore. The 19 acres is accessible by way of a quarter mile of boardwalk and deck overlooks. Decide as you walk among moss-covered boulders and evergreen forest, which path to follow - the higher overlook or the gentle beach. The long driveway leads away from highway noise and thoughts of the outside world. Power and phone are waiting for your choice of building sites. You may choose just to camp here, and keep the unique place as a preserve. Or use it as a group retreat or multiple family compound. The many moods of Superior can all be enjoyed here. Dramatic points protect the private views. A small extra drive from Grand Marais will feel well worth it once you turn off the highway and enter this place of true privacy.

MLS#6107927 \$1,750,000

ICONIC LAKE SUPERIOR HOME

This is the Lake Superior home people dream of. Absolutely incredible shoreline. Views of the Grand Marais harbor lights to the east and the Sawtooth ridges to the west. The full width deck is 75 feet from the water. Gently sloping ledgerrock shoreline with a pebbly beach perfect for launching a sea kayak on calm days or be daring and plunge in! A neighborhood eagle soars along the shoreline and lakers float by the horizon. The home features a bedroom suite on each level, in floor heat, a gas fireplace and main floor laundry. Don't miss the two-story insulated garage waiting for your finishing touches.



MLS#6107623

INLAND WATER PROPERTIES

DEVIL TRACK LAKE HOME - ESTATE SALE

This 3 bedroom, 3 bath home sits on 2 acres of dense forest and has 200 feet of shoreline on the coveted north shore of the lake. Quality-built 1981 home has recent updates. New kitchen has slate tile floors, granite

countertops and new cabinets. The windows and roof have been replaced recently. There are hardwood floors, lofted ceilings, large windows and an expansive deck. The long-term owner has left their 38-year estate here for you to inherit. There is a large amount of personal property included for the buyer to sort through. Some gems are included. There is a 2-car attached garage, and a second detached 2-car garage. Dock and lift are included. Don't miss this chance to get on Devil Track Lake. And, with a little effort you can make this your own long-term lake home.

MLS#6108491 \$689,000



HOME WITH SPARKLING WATER & SUNSETS

Custom built, single level lake home on pristine Wilson Lake. Known for crystal clear water and excellent walleye

fishing. Tucked deep inside the Superior National Forest, you can relax in the peaceful beauty of a BWCA-like experience. But here, you enjoy the modern conveniences of a four season, wheelchair accessible lake home with fiber optic internet. One level living, large great room, three bedrooms, two accessible bathrooms with roll-in showers, in-floor heat, slate and wood flooring, attached heated garage, and large deck and boardwalk down to the lake and fire pit. Open floor plan offers space for gathering along with two separate wings for privacy. Large windows throughout the home offer a panoramic view of the natural beauty surrounding the property.

MLS#6107163 \$679,900

WILDERNESS LAKE ISLAND HOME

Live off-grid with comfort and spectacular scenery on a 6.82 acre island on Greenwood Lake, Minnesota's highest lake.

Most of the 2000 ft shoreline is US Forest Service land. It's a jewel and you get the protection of your own island, offering isolation, wilderness views and wildlife. Comfortable small home is set up for your retreat lifestyle. Present owners built the home and large shop building with guest quarters, and have lived on the island for 15+ years. Off grid solar, generator power, new peat-moss septic system, lake water and satellite provide the comforts you desire. Air boat, pontoon and fishing boats included, providing access with a protective cove & docks for easy landing/loading.

MLS#6104980 \$595,000



INLAND WATER PROPERTIES



GREENWOOD LAKE PANORAMIC VIEWS

Thoughtfully positioned to take in the commanding views of Greenwood Lake, property offers the best of lake life and the north woods experience. Entering at ground level you are greeted by a large foyer which allows access to a bedroom, attached two stall garage and staircase leading to the main living area. Vaulted living area, open kitchen and dining area offer unobstructed lake views from nearly every angle. Two bedrooms with ample closet storage flank either side of the living area along with a full bathroom. Clear railing system on the deck allows you to sit in your comfortable seating arrangement and still take in the panoramic views of Greenwood. A short walk from the cabin leads you to the lakefront along part of the shared harbor and along the beach facing the big water. Off-grid living with the amenities of solar power, custom water collection system and propane fuel. Seasonal access due to road not being plowed during winter months.

MLS#6108310 \$595,000

LAKESIDE SANCTUARY

Beautiful, secluded property features 9.89 acres of land and 255' of level and park-like shoreline on Devil Track Lake, only 20 mins from Grand Marais. Tucked away among the trees, enjoy solitude and privacy with a bonfire by the lake. Property features a newly-constructed 1 bedroom, 1 bathroom cabin with a newly installed septic and well! Turn-key and fully furnished, everything in the cabin is new and ready for your enjoyment. Currently off-grid but power and broadband are slated to be brought in this fall.

MLS#6108306 \$485,000



TOM LAKE CABIN

Drop in your boat and turn on the inverter to power up your updated and turn-key cabins! Property has been customized and meticulously maintained for optimal ease of use. Fully operational solar

powers all the comfort and convenience of home for you and all your guests. Behind main cabin, 2-bedroom bunkhouse with half-bath and a game room & a garage for your ATVs and toys. A back-up generator is included, so no worries about running out of power! Internet and electric is coming to Brumbaugh Road in 2025! Maintenance-free steel roofing on all five buildings including sauna, tool shed and the heated outhouse! Nearly 4 acres with a large parking area and over 300 feet of shoreline on Tom Lake. If you have a day or a week to play with, just drive to the cabin, push a few buttons to power up, and get busy enjoying the dark sky country, where you can literally walk by starlight to see the northern lights and listen to howling wolves and mystical loons!

MLS#6108657 \$425,000

BIRCH LAKE SEASONAL CABIN

Stunning lake lot on desirable Birch Lake. Fabulous views of the length of the lake. Seasonal cabin with living room and one bathroom. A trophy rainbow fish. Waters Area Canoe Wilderness. See the cabin for a relaxing get-away or a great place for your next adventure. Property includes a detached garage, gazebo and a sleeping loft

MLS#6108048 \$339,000

INLAND WATER PROPERTIES



HUGE PINES, PRISTINE VIEWS, GUNFLINT LAKE

This large, densely wooded lot has 171 feet of shoreline on big water Gunflint Lake. Direct BWCA access, huge white pines, classic wilderness boulder shore and vast views of Canada across the lake. Nice building site with easy access to the water. Good year-round road access with power and Broadband at the parcel. Build your dream lake home on this outstanding lake lot.

MLS#6099440

TOM LAKE PEACEFUL HAVEN

A beautiful drive through the forested hills of the Hovland area takes you to this peaceful haven on Tom Lake. Tom Lake is known for walleye fishing and the surrounding area has many ATV and snowmobile trails.



Upper portion of 32+ acre parcel is full of deciduous trees with little understory allowing many options for a building site and creating trails through the woods. There already is a view of Tom Lake and the surrounding valley. With some selective clearing, the views could be even better. At the ridge, the forest turns to mature evergreens down to the lakeshore. The parcel south of the road is easily walkable with gently rolling topography which rises to the southern border. Enjoy summer sunsets across the open water and morning sunrises over the peaceful channel.

MLS#6108188 \$225,000



POPLAR LAKE LOT

Over 300 feet of private shoreline on Poplar Lake and just under 2 acres of land. Lots of spruce, cedar, tag alder and diamond willow creates a haven for moose and other wildlife. Bring rubber

boots and a camera to check this one out. Beautiful shoreline in a friendly neighborhood!

MLS#6108233 \$199,000



TOM LAKE LOT

There really are places that are still wild, with clear air and starry nights away from the sounds of civilization. Enjoy this untouched lake lot with 214ft of shoreline

on a fairly even heavily wooded lot. Whatever you enjoy is available here from relaxing at the lake, dipping your fishing line in the water or enjoying the area's many miles of ATV and snowmobile trails. Property has been surveyed and staked. Brumbaugh Road is private with a public landing at the north end of Tom Lake. No homeowners association here. Building plans subject to county approval.

MLS#6108312 \$150,000

HOMES & CABINS

CHARMING OFF-GRID HOMESTEAD IN ENCHANTED FOREST

This unique home is tucked deep in 40 acres of mature cedars and pines, adjoining large tracts of public land. Follow the long winding driveway



to a truly magical place. The main house is a straw-bale home with recent bedroom/bath addition, and a bright, outdoors-feeling 4-season porch/livingroom. Home features include tile and bamboo floors, pine paneling and stucco walls with deep window wells reflecting the straw bale design, giving a romantic old-world feel to the main kitchen/dining area. The large kitchen has custom cabinets, stained concrete countertops and a wood burner stove with oven. The main bedroom is two large upper rooms with lots of light and space. The large second bedroom has bright morning light, a small wood stove, and door to a private deck. Comfortable spaces and quality material and design are evident everywhere. This home is for those seeking simplicity and nature. Remoteness and independence are mandatory. Yet, it's a short drive to the main roads and a quick trip into Grand Marais for groceries.

MLS#6108193 \$429,900

NEWLY REMODELED SILVER BAY 4 BEDROOM HOME

This lovely 4 bedroom, 2 bath home has been remodeled from top to bottom with all new mechanicals including washer & dryer, refrigerator & dishwasher. Nice open floor plan with 2 bedrooms upstairs and 2 downstairs. Make this your home and basecamp for all your Northshore adventures. Silver Bay is conveniently located only an hour from Duluth with plenty of State Parks nearby.



MLS#6108044 \$339,000

COMMERCIAL



MULTI-USE PROPERTY HOVLAND

2.3 acre property has great home site with lake views, great well & septic, and an existing structure used as a local store & food business.

New patio in 2008 & new addition in 2010. Many options exist, from residential, rental, cottage industry, retail shop or continue its present use. Perfect set up for a move-to-the-Shore life change. Bring your idea & start the dream from here.

MLS#6103739 \$379,900,

MLS#6104735 \$479,900 (Includes existing business)



RENEW/BUILD A BUSINESS IN GRAND MARAIS

1.27 commercial zoned acres on Highway 61 in Grand Marais. Rent space potential. Includes a shop/storefront with some good bones! Great location for many types of ventures! Make an offer and build your business in a popular tourist area!

MLS#6107939 \$249,900

COMMERCIAL



LUTSEN COMMERCIAL SITE

Lutsen "downtown" location. Hwy 61 frontage-road access, 3.3 acres and 389 feet of frontage overlooking the highway, with some limited Lake Superior views. Nice creek borders the east property line, mature evergreen forest. Great location for retail, restaurant or art gallery with great visibility off the North Shore Scenic Highway. LTGC zone district (Lutsen Town Center General Commercial) allows many options. Three separate lots could be split. Located just minutes from Lutsen Mountains Ski Area, Superior National Golf Course, many lodges and recreational opportunities. **MLS#6105204 \$220,000**

RIVER/CREEK FRONTAGE

CASCADE RIVER FRONTAGE LOT

This is a rare opportunity to purchase one of the very few privately owned lots on the scenic Cascade River! Over 440 feet of private river frontage offers



peaceful calm and gives rise to creative dreaming. Build an off-grid compound with rustic cabins or a custom log home, or keep it wild for camping. There's plenty of space here to spread out with 26.6 acres, and seemingly endless public land to the south and west for hiking, hunting and other north woods enthusiasm.

MLS#6105797 \$350,000



40+ ACRES ON COUNTY RD 14

Over 40 acres within 10 miles of Grand Marais, with a creek running through and 1300 feet of County road frontage. Some very nice potential building sites in this parcel, and ample room to spread out. West and south property boundaries are abutted by Federal land as well. Zoned FAR-3, this could be subdivided if one desired.

MLS#6108229 \$330,000

40 ACRES PIKE LAKE RD

40 partially developed acres await your vision! Less than 20 minutes from downtown Grand Marais. Property has been improved with a gravel driveway, selective tree and brush clearing, and newly planted pines/



maple seedlings. It is hard to visit this property without getting carried away by all the possibilities. Beautiful secluded living space surrounded by nature. There is a lovely hilltop where a home could be built and provide year-round panoramic bluff views. On the west side of the property is a tributary to the Cascade River, highlighted by fragrant cedar stands, wildflowers and mosses.

MLS#6108391 \$189,000

RIVER/CREEK FRONTAGE



MAGNEY PARK AREA RIDGE TOP WITH LAKE SUPERIOR VIEWS

This remote and secluded "80" acre property has high ridge views of the big lake. The property adjoins Judge C.R. Magney State Park. Easements in place for road access on old logging trails. Ultimate privacy! Mixed, mature forest of evergreens and maples, creeks and pond. Walking distance to Brule River. There are many unique aspects to this beautiful recreational property.

MLS#6107790 \$129,000

MONS CREEK AND VIEWS

1000 ft of Mons Creek frontage & a great view from a high build site. Easy road access, but lots of privacy. 40 acre property w/ private deeded access to Lost



Lake, a short drive away. Private lake w/ limited use, a true wilderness feel. Perfect cabin retreat location w/ added bonus of private wilderness lake access. Homeowners association stocks lake w/ brook trout. Walk-in landing provides easy access for canoe or small boat. Roads are gated for security & privacy. Lost Lake Retreats is a truly secluded & private wilderness escape

MLS#6089090 \$60,000



HOME SITE WITH BEAVER PONDS

Beautiful Moose Valley parcel with over 11 acres, creek with ponds and views of the ridges surrounding this charming location. County road frontage with power and Broadband. A great home site in the Hovland area, close to Lake Superior access and the Arrowhead Trail.

MLS#6107876

LOOKING FOR WILDERNESS?

Are you among those who want to own remote acreage where your neighbors don't tarnish your dream? 40 acre parcel within a 1100 acre unit, bordered by federal, state and private ownership on parcels which cannot be subdivided. The property extends north from Lost Lake Rd to a large wetland with no development in sight. Launch your canoe below a great building site overlooking Mons Creek from a high point above the creek. New trail is cut to this overlook. Private deeded access to Lost Lake, a short walk south on a trail. Homeowners' association has defined covenants & a conservation easement of 44 acres along the south side of Lost Lake prohibiting any development. Lake is a natural environment lake with 150 ft setbacks.

MLS#6089091

RIVER/CREEK FRONTAGE

POND, WILDLIFE & TWENTY ACRES

This property has private access to Lost Lake as a bonus! Good road access and many building site options. Beautiful beaver pond and creek split the property. Good south exposure and view of the pond. Lost Lake is a tucked-away gem with limited private property and no public access. Good trout fishing and moose sightings. This is a remote retreat property with access to miles of trails. Seasonal road, off-grid now, but power and Broadband are slated to be installed here soon.

MLS#6098652 \$41,900



LAND/BUILDING SITES



2+ ACRES CLOSE TO GRAND MARAIS

Great location a few miles north of Grand Marais. Plenty of spots nearby to enjoy the cool breeze of the Big Lake! Or hop on the Superior Hiking Trail nearby and enjoy a walk in the woods. Property has a driveway in, build site has been cleared and is ready for your vision. With some selective clearing, there's potential for lake views!

MLS#6108217 \$89,900

LARGE, REMOTE ACREAGE - PRIVATE LAKE RIGHTS

This over 80-acre tract has some high ground with views of the hills to the south. Good road access. Some young planted pine trees. It adjoins a Private Conservation Easement area. The property is part of a private association with lake rights to Lost Lake, a limited access lake with shared carry-in landing from which you can launch your canoe or kayak. A unique opportunity.

MLS#6103975 \$74,900



MAPLE FOREST LOTS

Beautiful 5+ acre wooded lots, covered in Maple Forest. In the fall these beautiful lots will be ablaze with stunning colors. Caribou Lake Public Access nearby, hiking trails, Lutsen Mountains Ski Resort, Gitche Gumebe bike trail and all the things the North Shore has to offer.

MLS#6108144, 6108145 \$65,000 each

LAND/BUILDING SITES



40 ACRES- STONES THROW TO TOM LAKE

40 acres with an easy walk to the Tom Lake boat landing. Year-round road to within 1000 feet, power is possible here. Driveway easement granted to build shared access. Many great building sites. Easy access to trails and other lakes.

MLS#6095114 \$60,000

WOODED 64 ACRES - ACCESS TO PRIVATE LAKE

This large wooded retreat property is within walking distance to a shared landing on Lost Lake - a private access lake. Good road access and many nice places to build a cabin.

Privacy on top of restricted private road access makes this a unique opportunity for wilderness seclusion.

MLS#6103974 \$59,900



PEACEFUL TAIT LAKE PINES

You'll appreciate the private & peaceful 1.93 acre location in Lutsen, MN, complete with its own hiking trails, outstanding views, finely maintained roads, year-round accessibility, access to power, a calm overall vibe and deeded lake access to Tait Lake! One of

the most gorgeous drives one can find, up the Caribou Trail and around Tait Lake. Close to the Superior Hiking Trail, inland lakes, including BWCAW access & trails, Lutsen Ski Resort, Superior National Golf Course and access to food/beverage.

MLS#6106368 \$55,000



TAIT LAKE PINE LOT

Welcome to Tait Lake Pines! You'll appreciate the private & peaceful location in Lutsen, MN, complete with its own hiking trails, outstanding views/settings, finely maintained roads, year-round accessibility, access to power, a calm and serene overall vibe AND deeded lake access to Tait Lake!! It'll keep you close to the Superior Hiking Trail, many more inland lakes and trails, Lutsen Ski Resort, Superior National Golf Course & access to food/beverage.

MLS#6098276 \$54,900

LAND/BUILDING SITES



GREAT LOCATION FOR HOME OR CABIN
Just minutes west of Grand Marais on a black-top county road with power at the site, Broadband nearby. Five acre parcel with southern exposure. Potential Lake Superior views. Very affordable building site!
MLS#6096700 \$49,900



REMOTE 43 ACRES – LOST LAKE ACCESS
This secluded 43 acres adjoins federal land and is located on a private gated road. There's a seasonal pond, existing "logging" road into the property for immediate use of the land. The property comes with shared private access to Lost Lake, a lake with no public access. Plenty of privacy!
MLS#6103978

REMOTE ACREAGE, ADJOINING FOREST LANDS-PRIVATE LAKE RIGHTS

This 43 acre tract has adjoining federal land and state park within walking distance. Good road access, with an old "logging road" into the property. The property is part of a private association with lake rights to Lost Lake, a limited access lake with shared carry-in landing from which you can launch your canoe or kayak. A unique opportunity.
MLS#6103979 \$46,900

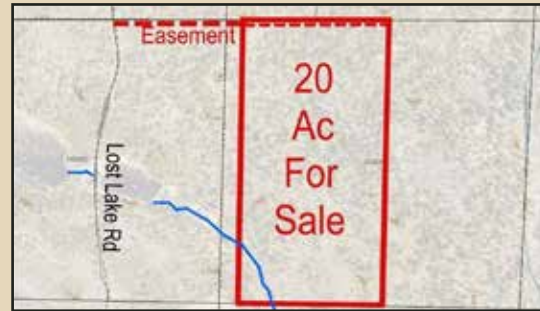


BRULE VALLEY LOTS

These three, 40+ acre adjoining parcels are connected to a vast amount of Federal and State land, and are the perfect place to get away from snaps, feeds and notifications. Everyone needs a quiet respite, and this place provides that wholly. Towering Pines, poplar, birch and evergreens, ponds, creeks and rolling hills all for you, and for the wildlife therein. Seasonally, it is about a 50 minute drive from Grand Marais. Check it out this summer and make it your own.

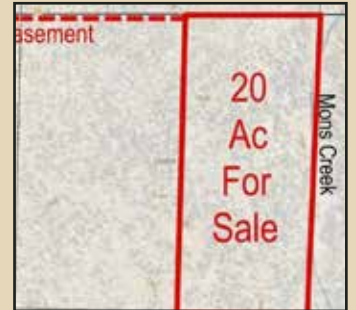
MLS#6102969 \$43,000 - Lot B
MLS#6102971 \$46,000 - Lot C
MLS#6102970 \$44,000 - Lot D
MLS# 6108066 \$129,000 - Includes all 3 lots

GREAT LOCATION HOME SITE.
Just minutes from Grand Marais on black top County Rd 7, a 5+ acre lot with easy access to power and Broadband. Good building sites.
MLS#6094099 \$45,900

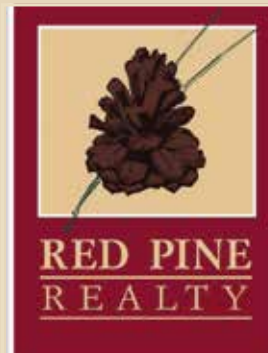


REMOTE PEACE & QUIET, PRIVATE LAKE ACCESS
Hide away in this dense forest, with miles of remote trails to explore, and private lake access to Lost Lake. Twenty acres of rolling topography and nice building sites for your cabin retreat. The area is part of an association with gated access to Lost Lake, a limited private property lake with no public access, and great trout fishing and wildlife viewing!
MLS#6098653 \$39,900

REMOTE, END-OF-THE-ROAD PRIVACY
This deeply wooded 20 acre parcel is remote and has nice southerly exposure and creek frontage on Mons Creek, a trout stream. It also comes with deeded access to Lost Lake, a private access lake with limited private property. A place to fish, listen to the loons and watch the sun set. The private area is gated and maintained by an association. The main road access is seasonal, but Broadband and power are slated to come here soon. This is a great area for ATV's with miles of roads to explore.
MLS#6098654 \$38,900



OFF GRID SOLITUDE
24+ acres of quality Northwoods land at high elevation. Many ATV and snowmobile trails in the area. Parcel features a mix of deciduous and pine trees with some rather large mature pines in the SW corner of property, as well as some clear areas for a camper, tent or possible build. Southern border of the property neighbors state land.
MLS#6108263 \$36,000



SERVING BUYER'S AND SELLER'S NEEDS IN COOK AND LAKE COUNTY.

We'd love to help you sell your property, or if you're buying we would like to make your North Shore dreams come true.

RECENTLY SOLD AND LISTED PROPERTIES



POPLAR RIVER CONDOMINIUMS, UNIT 582

Beautifully appointed 3 bedroom/3 bath with bonus loft overlooking Lake Superior.

Sold in 7 days.



LUTSEN CLIFF HOUSE TOWNHOME

Outstanding 3 bedroom/3 bath perched "Cliffside" over Lake Superior.

Sold in 2 days



POPLAR RIVER CONDOMINIUMS, UNIT 585

Original owner with unit in immaculate condition.

Sold in 23 days



LUTSEN SEA VILLA UNIT C-1

Two story end unit with Lake Superior lapping at your front door and deck

Sold in 4 days

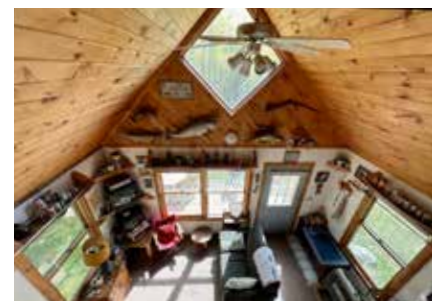
NEW LISTINGS OF THE LUTSEN REAL ESTATE GROUP



555 POPLAR RIVER ROAD

Inspiring views of Lake Superior while listening to the Poplar River rapids resonate along the wooded pathways leading to the ledge rock Lake Superior Shoreline. This 3-bedroom, 3-bathroom luxury condominium is tucked away on a wooded lot in the heart of Lutsen. Completely furnished combined with beautiful updated flooring ready for your use and enjoyment while also having the opportunity to earn income through rentals.

MLS 6108238 // \$499,900



84 SUNRISE DRIVE

Fall in love with this sweet little cabin on a 5 acre parcel! Enjoy the Big Lake views from the deck and large yard, or take a walk down to nearby Sugar Loaf Cove nature center. Spend rainy days playing games in the pine paneled great room or tucked away in the sleeping nook or loft bedroom with a book. The kitchen is set up for hauled water and plenty of space for vacation snacks. Electricity and fiber optic internet mean you can work remotely!

MLS 6108326 // \$199,000

I have never worked with such an **OUTSTANDING TEAM** of real estate professionals in my 35 years of real estate like our current team at Lutsen Real Estate Group and Cascade Vacation Rentals. **NEVER.**

—Mike Larson, Associate Broker

NEXT STEPS

LOOKING TO **SELL**?

Reach out about our Free Market Analysis.

LOOKING TO **BUY**?

No time better than the present.

JUST **STARTING**?

No problem...we are here to help you navigate both the buying and selling process.

FREE MARKET ANALYSIS

Give one of our "Awesome Agents" a call today to learn more about why it remains a good time to sell. Our team of experts will provide you with a **FREE** Market Analysis on your home and/or property and outline why Lutsen Real Estate Group is your **BEST CHOICE** when considering listing your home for sale.



CALL OUR **AWESOME** TEAM



INGER ADDRESS | Agent
(218) 216-7141
inger@lustenrealestategroup.com



MIKE LARSON | Associate Broker
(218) 370-1536
mike@staycvr.com



MOLLY O'NEILL | Agent
(218) 370-2079 | molly@lustenrealestategroup.com



STEPHANIE DRISKELL | Agent
(218) 206-5374
stephanie@lustenrealestategroup.com



STEVE SURBAUGH | Broker

LUTSENREALESTATEGROUP.COM

WE ARE VACATION RENTAL EXPERTS

Looking to buy a property for a vacation rental? Through our sister company, Cascade Vacation Rentals, we have gained incredible knowledge about what North Shore visitors are looking for. We are happy to use that information to help guide you in purchasing a property that is not only a good fit for you, but will also increase your chances of high rental income.



(877) 415-8974 // CASCADEVACATIONRENTALS.COM



Summer is here on the North Shore!

Time to get out and enjoy the sunshine!

Info@TimberWolffRealty.com



Call TimberWolff for
Your Personal Tour of
Homes & Land!!!
Local (218) 663-8777
Toll free (877) 664-8777

WATER, WATER, WATER AND THE BIG LAKE!



NINEMILE LAKE HOME

Enjoy this Fabulous vacation or year-round home at Ninemile Lake! This 3 bedroom home doesn't disappoint with floor to ceiling windows and vaulted ceilings in the Great Room, a spacious Kitchen and even a covered porch this home has everything you need to relax and unwind! Shared access to 1800ft of shoreline on Ninemile lake and close to many inland lakes, plus direct access to snowmobile, ATV and hiking trails means you can enjoy all your favorite outdoor activities! Visit today and start planning your summer Up North!



MLS#6107181
PRICE REDUCED
\$409,000



NEW! SUNSET COTTAGE ON TOM LAKE!

Ready to get away from it all? To go deep in the woods and enjoy lake life for a while? Your dream has come true, this cabin is it! Enjoy the sounds of the Loons and water hitting the 148-ft of shoreline on Tom Lake from the large deck overlooking the lake. Inside the cabin you have plenty of space with 2 bedrooms and the perfect kitchen for cooking cabin meals. Relax in the family room watching the sunset and plan your next day's activities. And While there is no electricity, the Solar/Battery system will provide you with the power you need for lights! All that is missing is YOU!

MLS#6108255 \$299,999



NEW! LIVE WHERE KIMBALL CREEK MEETS THE BIG LAKE!

Can you imagine enjoying the sounds of Lake Superior AND Kimball Creek while relaxing on your covered porch? This 3 bedroom log home has just that and so much more! From the Large Family room with tons of natural light to the open Kitchen just waiting for you to cook for the masses. Sitting on 3 acres this home has plenty of space for all your needs from the Large 2 car garage and workshop to the Guest Cabin. Close to Grand Marais but "Out-East" where its quiet. Enjoy the 180ft+ of pebble beach shoreline on Lake Superior or wander up Kimball Creek and enjoy some Trout Fishing. Visit today and start enjoying the quiet life on the North Shore!

MLS#6108139 PRICE REDUCED \$639,900



FIND THOSE NEW LISTINGS FIRST!!

EMAIL INFO@TIMBERWOLFFREALTY.COM TO SIGN UP FOR AUTO EMAIL!



Summer is here on the North Shore!

Time to get out and enjoy the sunshine!

Info@TimberWolffRealty.com



Call TimberWolff for
Your Personal Tour of
Homes & Land!!!
Local (218) 663-8777
Toll free (877) 664-8777

HOMES, HOMES, HOMES, READ ALL ABOUT 'EM!!



NEW! SOAK IN THE HARBOR VIEWS FROM THIS GRAND MARAIS HOME!

Walk in and feel at home. From the large kitchen to the Great Room with vaulted ceilings. Maybe it's the bedroom with an attached bathroom for friends, or the Kitchen and Dining room open to the living area. This home checks all the boxes from the updated living room and office. Relax in the Great Room and soak up the sunshine while you enjoy the view. Relax in the Great Room and Or create a garden with the harbor while you unwind. Walk outside and enjoy the view. The previous owners put into the landscaping from Honey Crisp Apple Trees and many perennial flowers that will keep fresh flowers on your table all summer. Ask agent about the Solar Panels that have basically eliminated the Electric bills for the current owners. Visit today and make the Up North Dream your reality!

MLS# 6107430 \$535,000



NEW!! KIVI TALO, THE "STONE HOME!"

A classic North Shore home along the shores of the Big Lake. This one goes way back, built by those who knew the best spots and craftsmanship. For years it was THE place to stop for a chat and shop for diamond willow walking staffs. Cozy one bedroom and loft, all very manageable - tiny home before its time. The current owners have shined and loved it up, adding a sturdy log barn for the ages! The remodeled fish house across the road sits on miles of public beach. 8+ acres of Northwoods to explore. Cleared area for gardens, firepit, and chillaxin'!

MLS# TBA \$375,000



BEAUTIFUL NEW CONSTRUCTION HOME

Enjoy everything Grand Marais has to offer in this NEW home! Welcoming interior, bright and open living room lined with large windows and patio door allowing for lots of natural light to brighten the space. Open living room anchored by the gorgeous stone fireplace is a beautiful focal point to the living spaces. Bright Kitchen, awesome pantry, and coffee counter, you'll love the kitchen! Main level has 2 bedrooms convenient to the living spaces. Bright Kitchen, awesome pantry, and coffee counter, you'll love the kitchen! Upper level is a large bedroom with custom shower and double sink, as well as an office/craftsroom. Upper level is a large bedroom with skylights!

PROPERTY IS OWNED BY A LICENSED REAL ESTATE SALESPERSON

MLS# 6106877 \$539,000 PRICE REDUCED



NEW! OLDIE BUT A GOODIE IN FINLAND!

Are you looking for your next project? This is the home for you! It needs some TLC but the bones of the structure are still in good shape. Sitting on 3 acres the location is ideal with the sounds from the Baptism River across the road. Very functional layout with an open kitchen, dining and living room and 3 bedrooms on the main floor give you plenty of space. Outside you have plenty of space to store all the tools and building supplies in the large Pole Building. Maybe park your camper in there while you work on the house this summer? Wander over the pond in the yard and create a peaceful oasis to relax by at the end of the day. Visit today and start your next project on the North Shore!

MLS#6108139 \$139,900

VISIT US AT TIMBERWOLFFREALTY.COM CHECK OUT OUR WEEKLY BLOG AND FACEBOOK POSTS OF FUN TIMES ON THE NORTH SHORE!



Summer is here on the North Shore!

Time to get out and enjoy the sunshine!

Info@TimberWolffRealty.com



Call TimberWolff for
Your Personal Tour of
Homes & Land!!!
Local (218) 663-8777
Toll free (877) 664-8777

CAMPN', HUNTN', FUN GETAWAY LAND, INVEST IN YOUR FUTURE!

FINLAND AREA

NEW! BUILD YOUR VACATION GETAWAY AT NINEMILE LAKE!

.18 acres with 1800ft of shared shoreline on Ninemile Lake! With septic, water and electric all on site all you have to do is hook up to it! Easily start your project and be able to enjoy your time Up North!

MLS#6107242 \$60,000

NEW! LAKE VIEW LOT! GREAT OPPORTUNITY TO BUILD A LAKE HOME AT THE VILLAGE AT NINEMILE!

Fish the day away from the 1800ft of shared shoreline on Ninemile Lake or travel to one of the many inland lakes that are close by. Snowmobile from your front door! All the important infrastructure is there: Septic, water and electricity- all you have to do is hook up to it! Start making your dream Up North home a reality today!

MLS#6107243 \$60,000

NEW! START ENJOYING YOUR INLAND LAKE DREAM AT THE VILLAGE AT NINEMILE!

This .60 acre lot was recently created by combining two lots so it offers plenty of room to build your dream cabin or home with an amazing lake view and direct lake access! Great opportunity for the outdoor enthusiast with snowmobile and ATV trails right outside your door! 1800ft of shared lake frontage on Ninemile Lake and infrastructure in place for Septic, Well and Electricity, all you have to do is hook up to it. You will be ready to relax and unwind before you know it!

MLS#6107241 \$150,000

TOFTE AREA

LAKE SUPERIOR VIEW LOT IN THE MIDDLE OF TOFTE!

This 3.61 acre lot is a dreamy location to build your North Shore home. With multiple south-facing building sites giving you great views of Lake Superior, electricity conveniently located at the road and Year-round access thanks to the Home Owner's Assn. You will be able to build your getaway and enjoy it all year long. There is quick access to snowmobile trails, many hiking trails and Cross Country skiing all close by. Visit today and make your dream of a North Shore Home a reality!

MLS#6107193 \$149,900

NEW! LAKE SUPERIOR VIEW LOT IN TOFTE! This is a rare parcel with tons of possibilities! The land borders Federal to the North giving you plenty of room to wander the woods or you could just walk down your driveway to get to Ray Berglund Wayside State Park and enjoy the MN Dot Lake Superior shoreline across the Highway. Nice mixture of trees, exposed rock, and beautiful Lake Superior views. This parcel is unique - long and narrow, with many options of where and what to build. Great location near Lutsen Mountains Ski Area is just a minute drive away, along with Superior National Golf Course and the paved Gitchi Gami State Bike Trail is across the highway. Build your cabin and enjoy the North Shore - maybe work remotely or move up here! MLS#6107607 \$99,000

MLS#6107607 \$99,000

LUTSEN AREA

NEW! LUTSEN, LAND AND LOCATION!

Great location to build your getaway Up North! Located in the heart of Lutsen you will have access to all your favorite outdoor activities from skiing to fishing. 2.5 acres with driveway in place. Best waiting for you!

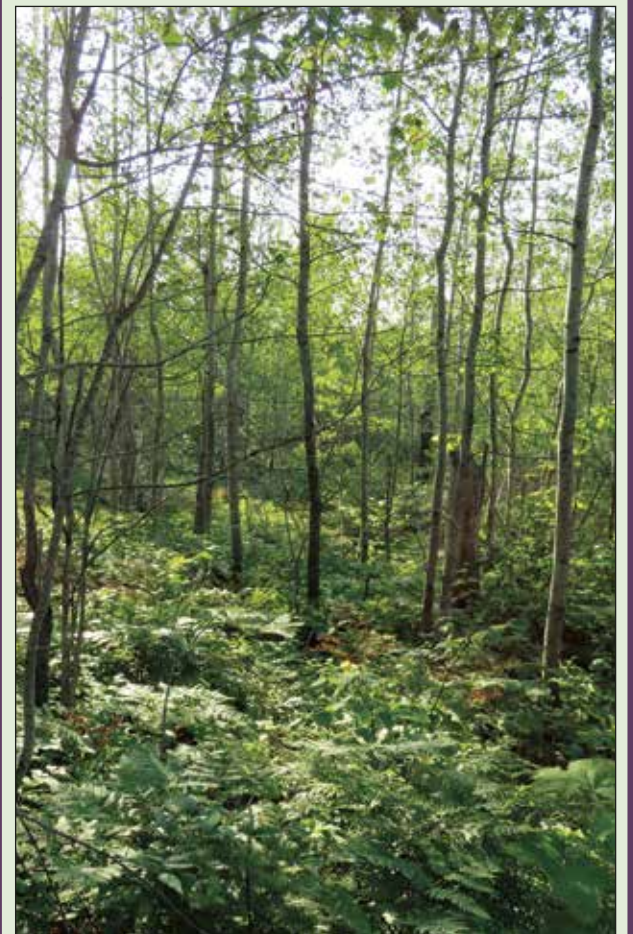
MLS#6107596 \$62,900!

GRAND MARAIS AREA

NEW! RARE OPPORTUNITY IN THE CITY OF GRAND MARAIS!

Large parcels don't come up for sale very often, especially within the city of Grand Marais, this is your opportunity! There are many possibilities to develop this 2+ acre parcel, The Property was just surveyed and there is a designated 33 ft wide easement on the east side to build a road to this parcel from E 5th ST. The location couldn't be any better with schools, YMCA, and the Community center within walking distance. Easily get to the Gunflint Trail, just a block away, and spend the day fishing at one of the many close inland lakes. Hiking trails, Biking trails, Cross Country Ski Trails and Snowmobile Trails are just a minute away, you will always have access to the different seasons adventures. Visit today and start planning your getaway Up North!

MLS#6107788 \$199,900



CHECK OUT OUR NEW LOCALLY CRAFTED TIMBERWOLFF WEBSITE, SEARCH ALL MLS LISTINGS AT TIMBERWOLFFREALTY.COM



COLDWELL BANKER
NORTH SHORE

218-387-2131

101 WEST HIGHWAY 61
GRAND MARAIS, MN 55604

LAKE SUPERIOR



384X Highway 61 E

Exceptionally stunning Lake Superior property, perfect for building your ultimate North Shore retreat, with over a thousand feet of shoreline! This 5+ acre lot has officially been subdivided into 2 independent lots and is part of the aptly named Paradise Beach. Imagine owning this beautiful cobblestone beach, that is surrounded by government owned land & provides extensive beach walking opportunities? The views of Marr Island are amazing, especially when you are enjoying a spectacular sunrise or relaxing and listening to the lapping waves – it will take your breath away

MLS 610784

\$1,200,000



4648 CASCADE BEACH ROAD

Classic 2BR, 1BA cabin sits at the edge of 240' of rocky shore, with 1.6A and loads of privacy. The wrap-around deck is ideal for enjoying the many seasons, sounds and expressions of the lake, whether it is a sunrise or a sunset.

MLS 6107951 \$899,900



NEW 78 TROLL'S TRAIL

Affordable Lake Superior! Over 300' of shared lakeshore and over 7 acres of shared land! Great opportunity to build a cabin or year round home. Forested area, firepit picnic area, lawn area--sit back and relax while someone else takes care of the plowing and lawn care.

MLS 6108596 \$149,900

INLAND LAKE LOTS



CARIBOU LAKE

Build your dream home on the shores of the coveted Caribou Lake. Lot directly abuts USFS to the north, features 213' of shoreline and 3.5A of wooded land.

MLS 6108084 \$348,900



GREENWOOD LAKE

Dramatic views and 202' of shoreline. 1A parcel already has a driveway in place and trails through mature trees to the waterfront. Build overlooking this impressive lake.

MLS 6107777 \$169,900



NEW SQUINT LAKE LOT 4

234' of shoreline, nicely wooded--Great mid-Trail location, close to restaurants, lodges, and community center. Squint Lake offers privacy with the option to be as active as you'd like!

MLS 6108302 \$129,900



NEW SQUINT LAKE LOT 5

Peaceful lot, dead-end private road, with 225' of Squint Lake shoreline.

Close to all the mid-Trail has to offer. Make your dreams come true.

MLS 6108303 \$134,900

WWW.CBNORTHSHORE.COM



COLDWELL BANKER
NORTH SHORE

218-387-2131

101 WEST HIGHWAY 61
GRAND MARAIS, MN 55604

HOMES & CABINS



NEW 2246 COUNTY ROAD 7

Fantastic, sunny, tastefully finished 4BR, 4BA home on 16A with Lake Superior views! Finished walk-out could be rented as a 1BR unit with full kitchen and bath. Attached and detached garages, garden area, decks, patio, 4-season sunroom, pond, and more.

MLS TBD **\$849,900**



NEW 2817 HIGHWAY 61 E

Looking for a Big Lake getaway near Grand Marais? Impressive views of Lake Superior high on a bluff with a perfect sandy-pebbly beach down below. Open concept rustic cabin for you to choose the layout.

MLS 6108131 **\$229,900**



5541 E HIGHWAY 61 E

Charming 3BR home on 34.5A of forested land to explore the Northwoods. Lake Superior access, which is perfect for getting out on the water and enjoy a day of kayaking.

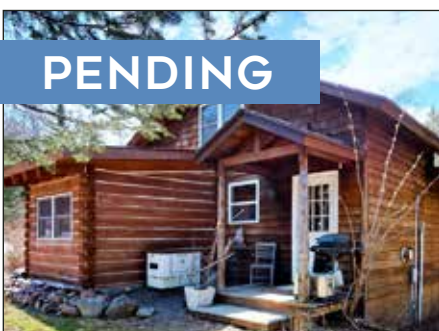
MLS 6107983 **\$379,900**



REDUCED 40 COUNTY ROAD 44

Looking for quintessential Northwoods home? This 3BR, 2BA, custom built, log-sided home oozes charm & character and sits on over 8 acres. There is an insulated garage with workshop space.

MLS 6107949 **\$599,900**



PENDING

1134 PIKE LAKE ROAD

Charming 2BR year-round Northwoods log cabin tucked away on 31 acres in the heart of the boreal forest. Insulated bunk house and the sauna/spa house could be used as a guest cabin.

MLS 6107985 **\$439,900**



296 CRAMER RD

Enjoy the Lake Superior views and the privacy of 5 acres! 4BR/2BA home with open concept kitchen, good sized pantry, breakfast nook, and great room. Park your car and store your toys in the 20x24 garage! This is a great location for many outdoor adventures!

MLS 6107103 **\$319,900**

WWW.CBNORTHSHORE.COM



COLDWELL BANKER
NORTH SHORE

218-387-2131

**101 WEST HIGHWAY 61
GRAND MARAIS, MN 55604**

LAND



XXX HIGHWAY 61 E

Beautiful 20 acres overlooking Lake Superior! Prime spot for a deer camp as this area is known for excellent hunting or a secluded cabin in the woods. This property is currently without access, but one could obtain an easement.

MLS 6107462 \$39,900



86 SUNRISE DRIVE

Lake Superior view 5A lot situated along the forested ridge line. Just a 1/2 mile away is Sugarloaf Cove for easy access to Lake Superior and a couple minutes up the road is the Superior Hiking Trail.

MLS 6107842 \$149,900

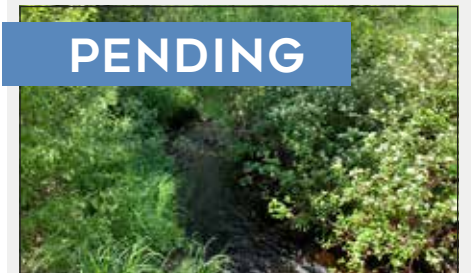


SOLD

X13 MURPHY MOUNTAIN TRAIL

Nicely wooded 5 acre lot at the end of a cul-de-sac with views of Lake Superior! Great location--just minutes from Grand Marais

MLS 6102645 \$129,900

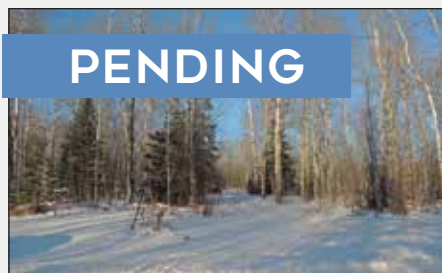


PENDING

1X BRANDON LANE

Beautiful lot just outside Grand Marais. Fall River runs through this property. Dramatic frontage!

MLS 6095813 \$62,000

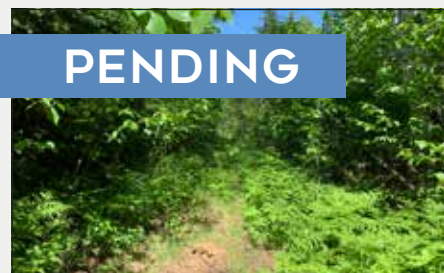


PENDING

183 LINNELL RD

Wonderful 5 acre lot on a quiet county maintained road with drilled well and partial driveway in place. Perfect distance from town for some country living yet close to all Grand Marais has to offer. Potential lake views!

MLS 6106867 \$89,900



PENDING

XXX REASON ROAD

If you're looking for a remote property with access to recreation, this is the one for you! 120 acres of mature trees, varied topography, and wildlife. Make trails to explore the area and let your adventure begin.

MLS 6103087 \$119,900



NEW

11XX HIGHWAY 61 W

Unique opportunity to find a 1A lot in the heart of Grand Marais. Directly abuts Highway 61, with commercial usage, perfect for someone considering a home for their business or wanting to build short-term rentals.

MLS 6108208 \$199,900



1142 CAMP 20 RD

170+ acres of heavily forested land that has been replanted with many beautiful pine trees, poplar & cedar trees. Features gravel pit and pond and abutting State land. Seller is licensed real estate agent in MN.

MLS 6108125 \$189,900

COMMERCIAL



12XX HIGHWAY 61 W

RARE opportunity to find almost 6A of mixed use located in the heart of Grand Marais, with city sewer and city water. This property has approximately 825' of frontage on Highway 61 and access off 1st Street.

MLS 6107103 \$789,900



1315 E HIGHWAY 61

Incredible commercial opportunity at Grand Marais City Limits Current use includes a 3BR rental unit, office, and home! Cathedral ceilings, partially finished second floor, custom designed kitchen, main bedroom with ensuite & patio access.

6104280 \$1,500,000

WWW.CBNORTHSHORE.COM



COLDWELL BANKER
NORTH SHORE

218-387-2131

101 WEST HIGHWAY 61
GRAND MARAIS, MN 55604

INLAND LAKE HOMES & CABINS



NEW 488 E Bearskin Road

2+ bedroom cabin on the edge of the BWCA of East Bearskin Lake. This Forest Service leased lot covers approximately 1.13 of private wooded acres and 180' of accessible shoreline. Every room is light and airy due to large windows and skylights in every room. The bunkhouse is comprised of a cozy sleeping room for guests, a sauna with shower, and a workshop. This is the perfect base for all your outdoor adventures!

MLS 6108589

\$349,900

261 Caps Trail

Serenity awaits you in this turn-key charming 3 bedroom, 2 bath, year-round cabin on Tait Lake. The property features 190 ft. of shoreline with 2.9 acres and is in a peaceful bay on the north side of the lake, with the Tait River gently running along the western edge of the property. Access to HOA maintained hiking & biking Trails.

MLS 6107953

\$599,900



NEW 44 Carbine Road

Imagine the ultimate northwoods experience--this rustic, two-bedroom cabin is 15 feet from the shore of McFarland Lake at the end of the Arrowhead Trail. Good fishing! Neighboring Pine Lake, Little John, and the BWCAW. Enjoy your day on the water swimming, boating, canoeing, and fishing then relax on the dock and enjoy the sounds of nature. Relax, unwind, and enjoy this pristine area!

MLS 6108337

\$199,900