

SEPTEMBER 2022

THE NORTH SHORE'S ULTIMATE
REAL ESTATE
GUIDE





Full views. A fraction of the price.

Surfside
on lake superior



New townhomes, total coastal luxury right on the shore of Lake Superior. 3,000 s/f, 3BR, 3BA. Quarter-share ownership w/ flexibility for personal use & rental income. Excellent family retreat or investment property. Prices from \$174K-\$215K, includes furnishings.

Bluefin Bay Condos & Townhomes
Own a piece of Minnesota's Favorite Resort



All units are currently sold. To be notified when something comes available, email eric@bluefinbay.com.



Eric Frost
Sales Agent,
Bluefin Bay Family of Resorts



Let Eric, exclusive sales agent for Bluefin Bay Family of Resorts, provide the details about each property and guide you through the process. Contact him today to learn more.

218-663-6886 | eric@bluefinbay.com



Bluefin Bay | Surfside | Temperance Landing *On the shores of Lake Superior in Tofte, Minnesota*



Fall is in the Air! Time to Visit the North Shore
and Enjoy the Colors!

Info@TimberWolffRealty.com

Call TimberWolff for
Your Personal Tour of
Homes & Land!!!
Local 663-8777 •
Toll free (877) 664-8777

LIVING THE BIG DREAM ON THE BIG LAKE!

NEW! BEAUTIFUL LAKE SUPERIOR CONDO ON THE NORTH SHORE!

Walk into this condo and curl up in front of the cozy wood fireplace while soaking in the views and sounds of the big lake. Located on the lower level of Chateau LeVeaux you have a great walk out patio, perfect spot to sit with your morning cup of coffee or enjoy the bonfire outside the unit in the evening. The kitchen is fully equipped, easily make all your meals in house before enjoying your adventures on the North Shore. The open floor plan even gives the cook a great view of the big lake! Enjoy the multiple hiking trails, cross-country ski trails or snowshoeing all close by, Not to mention the many State Parks. Your options of things to do are endless! Or stick around the resort and enjoy the amenities they have including a lakeside sun deck, pool, Jacuzzi, sauna, game room, fire pits and grills. Its time to Relax and Unwind on the shores of Lake Superior. Plan your visit today!

MLS#6104524 \$239,000

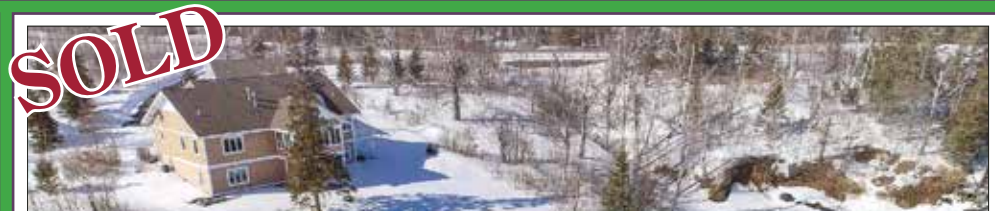


SUPERIOR'S CROWN JEWEL!

Architectural Tofte Masterpiece! Dramatic, Gitche-Gumee Ledgerrock, easily accessible. Including a protected pool for launching kayaks, or for the brave, a quick dip (be sure the sauna is fired up. 5 bedroom, 4 bath, to die for kitchen! Inside, the home is endless, room for everyone! Within all that space are: nooks with fireplaces, a recessed seating area for those important conversations that only the Big Lake can stir, a whole lower level that can function on its own with kitchenette, family room, a couple bedrooms, bathroom. Carleton Peak granite stone columns soar through the home. The Master bedroom has it all: private balcony, gas fireplace, spacious walk-in closet, large private bath with Jacuzzi tub. A sprawling deck overlooks the yard and shore. An awesome property in the Northwood's!

MLS#6102646 \$1,615,000

NEWER CONSTRUCTION LAKE SUPERIOR CABIN IN LUTSEN!
MLS#6102607
\$699,000



SUPERIOR STUNNER!
MLS#6101781 \$1,300,000

FIND THOSE NEW LISTINGS FIRST!!
EMAIL INFO@TIMBERWOLFFREALTY.COM TO SIGN UP FOR AUTO EMAIL!



Fall is in the Air! Time to Visit the North Shore
and Enjoy the Colors!

Info@TimberWolffRealty.com

Call TimberWolff for
Your Personal Tour of
Homes & Land!!!
Local 663-8777 •
Toll free (877) 664-8777

HOMES, HOMES, HOMES, READ ALL ABOUT 'EM!!



NEW! RUSTIC CABIN ON THE GUNFLINT TRAIL!

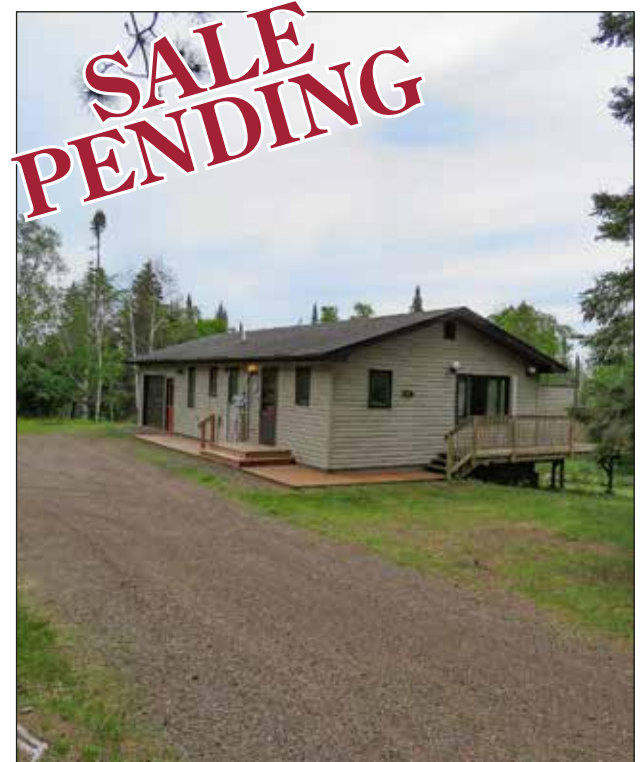
Calling all home project lovers- this Rustic Log Cabin is waiting for you! Hand hewn small log cabin needs love and care to bring it back to its glory. There's no electric to the cabin, but the large windows provide lots of natural light throughout the cabin. Two main floor bedrooms allows you plenty of bunkroom space, and a small loft could be another bunkroom or storage. Rustic kitchen with no plumbing, but if you improve the foundation, one could add well and plumbing with a new septic system. Two car detached garage gives you room to store all your seasonal toys. The property has 11+ acres with plenty of space to create your own trails or build your dream. Fabulous location close to many resorts, minutes to the BWCAW, summer hiking trails and winter snowshoe and snowmobile trails, not to mention all the inland lakes for fishing! No matter what your favorite outdoor activity is you can find it
HERE on the Gunflint Trail

MLS#6104862 \$139,000

RELAX IN LUTSEN!

This home has been lovingly cared for, Easy to just show up and start living a Northwoods life! Surrounded by 6+ acres with gorgeous boreal forest surrounding: cool and leafy in the summer, a pageant of colors in the fall. Just a ¼ mile or so up the Caribou Tr, conveniently located to all the fun of the Lutsen area and an easy 20 minutes to Grand Marais. Inside is an ideal layout of ease for family life, or friends or just make it your own with one of the two bedrooms becoming an office. The kitchen is the picture of utility with a plethora of original birch cabinets. Breakfast bar is handy, Laundry room with additional storage. The living room is spacious and spills onto the deck via a large sliding glass door. The deck is roomy and ready for BBQ, a hammock, reading or just zoning out. The best for last - charming guest cabin built way back in the day awaits your vision: studio, yoga/meditation retreat, she-shed, man cave? Come and get it!

MLS#6103902 \$295,000



CONTEMPORARY LUTSEN LIVING!

MLS#6102458 \$389,000



BEAUTIFULLY REMODELED LUTSEN HOME!

Nestled downtown Lutsen with seasonal Lake Superior views, a nice yard, and a cool raised garden. The main level has a flowing floor plan with a kitchen, dining area, and nice size living room with a cozy stove and new deck. Check out the sunroom - perfect for plants, morning yoga, or an amazing home office with a view! 3 bedrooms and a recently added bathroom upstairs! Super nice detached garage used as a workshop, resided, insulated, and heated.

MLS#6102794 \$289,900



CHECK OUT OUR NEW LOCALLY CRAFTED TIMBERWOLFF WEBSITE,
SEARCH ALL MLS LISTINGS AT TIMBERWOLFFREALTY.COM



Fall is in the Air! Time to Visit the North Shore
and Enjoy the Colors!

Info@TimberWolffRealty.com

Call TimberWolff for
Your Personal Tour of
Homes & Land!!!
Local 663-8777 •
Toll free (877) 664-8777

INLAND LAKESHORE OPPORTUNITIES!



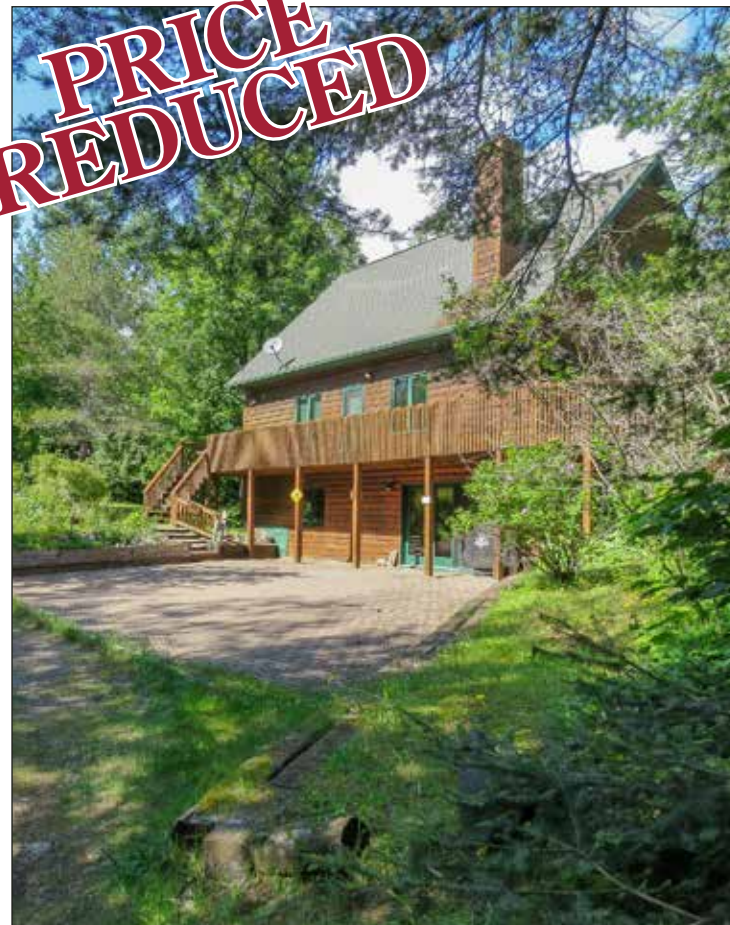
NEW! PEACE, PURE WATER AND ELEGANCE ON DEVIL TRACK LAKE!

Here on a sprawling lot, on the shiny, big water of Devil Track Lake is a class-act home. The home has been well-loved and maintained, nothing to do but move in and enjoy. Two baths, Three bedrooms, Terrific kitchen, all high end and ready for gatherings, stories, memories, and frying up walleyes or Devil Track's white fish. The living room is spacious with vaulted wood-paneled ceilings, dramatic wood burning fireplace, and views to the lake and beckoning deck. Out on the deck the world is your oyster: grill it up, relax with a cold one, tell some tales, hear the loons, the owls, take it all in! Or wander the 3 acres and 300ft of shoreline. Attached two car garage gets you in and out of the rain or snow, but wait, detached garage has three more stalls and a workshop/kennel. Fill it all up with the extras that bring this country to life: canoes, kayaks, ATVs, snowmobiles, fishing boat, store your pontoon. Visit today and create your life on the North Shore!

MLS#6104817
\$859,900



**PRICE
REDUCED**



BEAUTIFUL LUTSEN LIVING WITH CARIBOU LAKE ACCESS!

Are you disappointed with the high cost of lakeshore living in Lutsen? Tired of looking at your neighbors right next door on the lake...maybe a little seclusion while entertaining on the deck would be nice? Take a look at this Gorgeous Lutsen Caribou Lake home, featuring a trail to Caribou Lake where you can install your own dock, this is NOT shared access, but your own lake easement. The home affords you peace and quiet, surrounded by a maple forest with tons of space for year round living, an oversized two car detached garage for all the toys. Peninsula Point Trail location, minutes to Lutsen Mountains and Lake Superior!

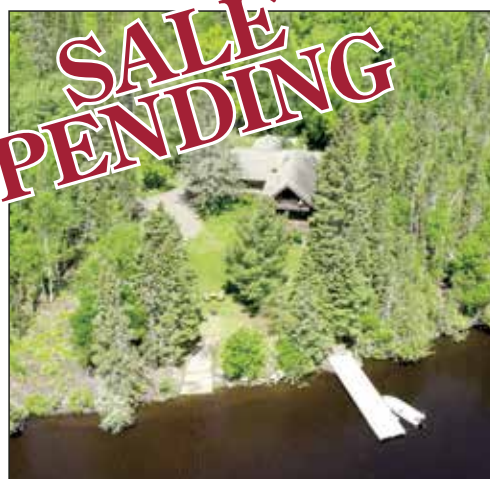
MLS#6103652 \$600,000

NEW! RELAX AT LOON LAKE!

Looking for your own inland lake getaway? This is it! This cute year round cabin has a great location with easy access just off the Gunflint Trail. Overlooking Loon Lake you will have amazing views to soak in while enjoying your morning coffee on the deck or meander down to 140' of shoreline on Loon Lake and spend the day fishing. Walk in and enjoy the vaulted ceilings with log beams and an open floor plan giving every space an amazing view of Loon Lake. With all the inland lakes nearby, the snowmobile trails and hiking trails you will never have to wander far to find the day's adventure. All that is missing is you and your fishing pole to catch your limit!

MLS#6104690 \$399,900

**SALE
PENDING**



CARIBOU LAKE GETAWAY!

Classic cabin home, lovingly maintained on a parcel of land with awesome shoreline, the kind a person could get back in the day. 240+ feet of it! A permanent crib dock is the site for all the lake action and there is even an old-school boat ramp, so handy for getting the watercraft in and out. Step inside to charm, spaciousness, comfort, oak floors, pine paneling, vaulted ceilings! 4 bedrooms, two full baths, living room that sits right behind a commanding pane of glass. The kitchen has the cutest cabinets! 1.5 stall garage is all you really need. Small shed to contain the garden tools, etc. Plenty of land here for a lake lot, 1.56 acres!

MLS# 6103720 \$650,000

**SALE
PENDING**



Considering Selling? Curious what your home or land is now worth? Follow the recommendations of our many satisfied clients....call TimberWolff for your updated Comparative Market Analysis TODAY!



Fall is in the Air! Time to Visit the North Shore

and Enjoy the Colors!

Info@TimberWolffRealty.com

Call TimberWolff for
Your Personal Tour of
Homes & Land!!!
Local 663-8777 •
Toll free (877) 664-8777

CAMPN', HUNTN', FUN GETAWAY LAND, INVEST IN YOUR FUTURE!

SILVER BAY TO SCHROEDER AREAS

Enjoy the wilderness on 24+ acres!
Year round access with electricity at the street! Plenty of space to create your up north getaway! Only 6 miles up the Cramer road from Schroeder you have close access to many inland lakes and trails.
MLS#6101541 \$60,000 PRICE REDUCED

TOFTE AREA

Bring your dreams of a North Shore Getaway to life on this nice Tofte lot in Wildwood Acres!
Located just a little ways up the Sawbill Trail you will be close to all your favorite outdoor activities like Hiking the Superior Hiking Trails or Snowmobiling. Year round road access via a simple association, electric at the road and a driveway in place means you can start building as soon as you're ready! Visit today and start making your dream of owning a North Shore getaway come to life! **MLS#6102865 \$30,000 SOLD**

Beautiful parcel at Birch Cliff, located between Lutsen and Tofte, you'll enjoy the best of both worlds!
Dine at BlueFin and Ski the day away at Lutsen Mountains from this lovely corner build site with decent Lake Superior views and views of Carlton Peak in the distance. LeVeaux Mountain is to the North, wowser setting!
MLS#6099657 \$75,000

LUTSEN AREA

Looking for a great affordable lot with lake access? Look no further, this lot has that plus more.
With a driveway in to a cleared build site you can easily envision your getaway cabin or year round home on a backlot at Tait Lake. While the property isn't waterfront you can launch your boat at one of the two association boat landings just down the road and enjoy the lake fishing or relaxing Year round access, electric at street, build ready!
MLS#6103719 \$49,900 SOLD



LUTSEN AREA

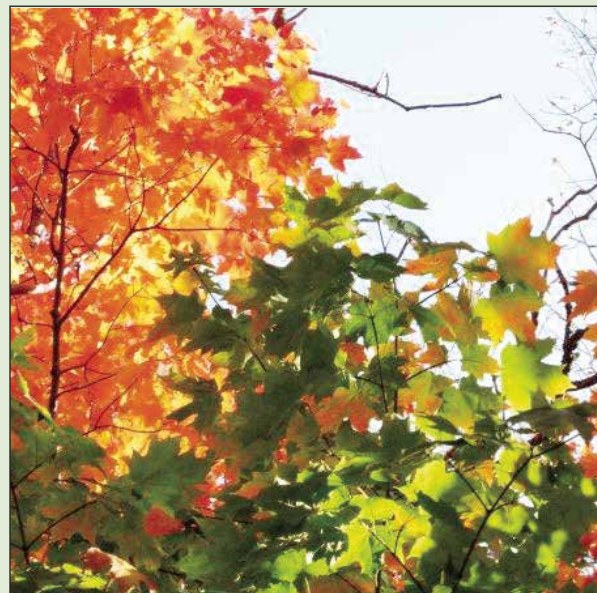
Beautiful Old Pines and Views of Tait Lake, the surrounding forest, and all the way to Eagle Mountain!
This 5+ acre lot is a Northwoods gem. A diversity of tree species creates a lovely sylvan vibe with plenty of elbow room. The lot comes with deeded access to Tait Lake at two landings: one peaceful and just right for a canoe or kayak or a developed ramp for a bit of evening cruising in a motor boat. Select a building site along the south line of the lot to maximize the views. Not far from Lutsen, about a half hour to Grand Marais, yet a feeling of being deep in the woods. Come have a look, do a walkabout and fall in love with your own acreage Up North!
MLS#6103685 \$79,000

Lutsen Maple Forest bordering Superior National Forest!

Looking for a peaceful spot close to some beautiful inland lakes? This 6+ acres is it! Tucked away in the wilderness but still only 15 min from downtown Lutsen. Close to Christine Lake, White Pine Lake and Barker Lake, you will have plenty of options when you want to go fishing or canoeing. Take the Caribou Trail to the Honeymoon Trail, to Lund Road. The Honeymoon Trail is on the Fall Leaf Tour, beautiful Maples, and this lot has plenty! A mature canopy of trees, including maples, birch trees and pines brings with it a wide arrangement of wildlife and will make a beautiful view to enjoy once you create your getaway. Check it out today!
MLS#6103934 \$85,999 SALE PENDING

8+ acre parcel in the Heart of Lutsen with Lake Superior views!

Great place to build your dream cabin or permanent home, with plenty of space to enjoy the quiet woods atmosphere. Close to all Lutsen has to offer and many inland lakes in the area which are a quick drive away. There is year round accessibility via association road. Visit today and start planning your dream getaway!
MLS#6102890 \$164,900 PRICE REDUCED



LUTSEN AREA

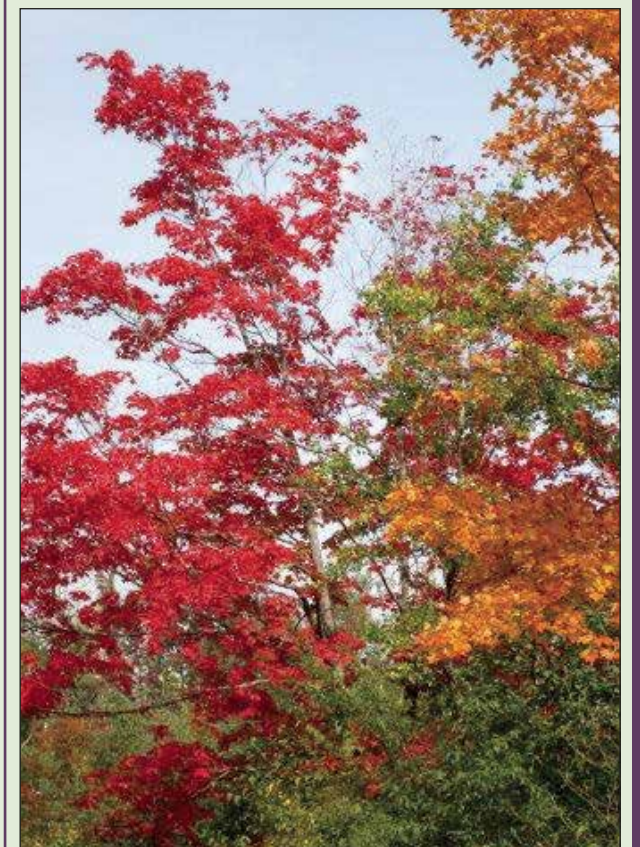
Lutsen Build sites with shared septic and well just waiting for your little cabin ideas! Looking for a site to build without spending an arm and a leg? These sites are it! Well and Septic in place, just Build and Enjoy!
MLS#2309328 \$39,000 AND OTHERS, JUST ASK ABOUT MINK RANCH!

Enjoy all the North Shore has to offer from this property in the Heart of Lutsen.
This 2+ acres of Boreal Forest is just a minute from Lutsen Mountains Ski Resort and Lake Superior! Well buffered from Highway 61 on Turnagain Trail! Year Round Access!
MLS#6102750 \$51,900 SOLD

GRAND MARAIS AREA

Beautiful 15 acres near Grand Marais!
Bordering National Forest to the south you will have plenty of space to explore! Parcel has been surveyed and corners are flagged. Dreamy building spot near a group of pine trees, even a bubbly creek to create a magical setting!
MLS#6103293 \$129,000 SOLD

Enjoy big views of Lake Superior from this gorgeous parcel, just minutes west of Grand Marais!
5+ acres gives you room to build your dream getaway but close enough Grand Marais to enjoy everything town has to offer!
MLS#6103292 \$129,000 SOLD



CHECK OUT OUR NEW LOCALLY CRAFTED TIMBERWOLFF WEBSITE, SEARCH ALL MLS LISTINGS AT TIMBERWOLFFREALTY.COM



COLDWELL BANKER
NORTH SHORE

218-387-2131
800-732-2131

101 WEST HIGHWAY 61
GRAND MARAIS, MN 55604

INLAND LAKE PROPERTIES



21 VOYAGEUR BAY
This sweet 2BR, 1BA cabin is surrounded by towering pine trees and located on Gunflint Lake. The cabin is situated on a USFS leased lot.
MLS 6102806 \$309,900



46 DEVILS POINT RD.
Get away to this delightful 3BR, 1BA cabin nestled on a wooded lot with 180+ feet on Devil Track Lake's north shore. It is so peaceful and secluded.
MLS 6103495 \$325,000



1726 GREENWOOD LAKE RD
Off-grid, remote, living at its best! This light and airy three bedroom home has a top-of-the-world view of majestic Greenwood Lake! Designed to capture the views, this home is sure to impress. Shared lakeshore/boat harbor.
MLS 6104029 \$745,000



SAG LAKE TRAIL
345' of gorgeous Saganaga lakeshore frontage. Well built and cared for main cabin with great lake views and historic log cabin.
MLS 6103140 \$449,900



CARIBOU LAKE
Rare opportunity to find a lake lot to build your dream home on the shores of Caribou Lake. Lot abuts USFS, features 213' of shoreline and 3.5 acres.
MLS 6103447 \$399,900



TOM LAKE
Listen to the loons and enjoy the waves gently swelling on the shore of this Tom Lake lot with over 200 feet of frontage! With an easy slope to the lake.
MLS 6104147 \$74,900



TOM LAKE
WOW! Beautiful Cedar Log Cabin on the shores of Tom Lake with a bunkhouse, sauna, and gorgeous piece of shoreline. Features 191 ft of shoreline & 3.31.
MLS 6104378 \$269,900

LAKE SUPERIOR



NEW 1534 HWY 61 E

Exceptional Lake Superior lot with 5.8A and 313' of stunning ledge rock shoreline, located less than 2 miles from downtown Grand Marais, providing a premier location. The long winding driveway and ample acreage provides plenty of privacy that truly creates a park like setting. There is a sweet old family cottage used for many years, that could be updated or leveled to accommodate your dream home.

MLS 6104674 \$769,999

WWW.CBNORTHSHORE.COM



**COLDWELL BANKER
NORTH SHORE**



PENDING



1100 Old Shore Road

A rare Lake Superior find, this exquisite 3+ bedroom home has beautiful beach, great privacy, and is conveniently located on the edge of the Grand Marais city limits. 194 feet of accessible private beach fronts this 1 acre property. A large garage with a heated shop space completes this golden opportunity. Call today!

MLS 6103709

\$1,395,000

NEW 2115 Hwy 61 E

Custom built, 3 bedroom, 3 bath home, located on a premier lot, overlooking 5 Mile Rock and featuring 220' of gorgeous gravel beach shoreline! This one level home, with attached 2 car garage, was thoughtfully designed to take advantage of the views while creating a warm atmosphere, with all the bells and whistles.

MLS 6104643

\$649,900

PENDING



PENDING

7110 E Highway 61

Amazingly beautiful Lake Superior shoreline is matched by this gorgeous 2 bedroom, 2 bath home. View the lake from every room! Almost 600 feet of shore with a mix of rock and some gravel beach. A second dwelling has a great studio space flanked by two separate apartments. The possibilities are endless!

MLS 6103676

\$1,200,000



WWW.CBNORTHSHORE.COM

HOMES & CABINS



5038 E HIGHWAY 61

It's time to dream big with this property--what an opportunity for you! Land is split zoning: commercial and residential! Main home, multiple cabins, garage, and a seasonal commercial building. You could live in the two-bedroom home and decide what type of business would benefit the Hovland area.

MLS 6102913 **\$279,900** REDUCED



51 MORT MEADOWS

Amazing property with investment possibilities! 10-acres of mature forest, Lake Superior views, previous site of Gunflint Gardens. Large 4BR home, fabulous studio apartment with its own entrance, detached sweet rental cabin, 3-stall garage, greenhouse, pond, gardens, and more! Plan to take your time when you visit this lovely home. Dead-end road for privacy.

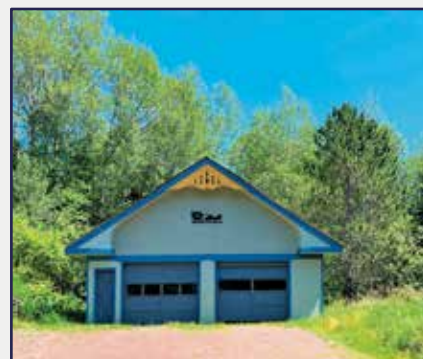
MLS 6104233 **\$459,900**



3066 COUNTY RD 7

Amazing cabin situated on 5 acres and abutting State land. Just minutes from town with all the privacy you desire. This well built and well maintained cabin offers 1 bedroom and 1 bathroom with a loft for sleeping quarters.

MLS TBD **\$349,900**



25 GUSTAV LANE

Here is your chance for country living, minutes from Grand Marais. 2BR/2BA, 1 1/2 story home is located at the end of a private road and has seasonal Lake Superior views. Attached and detached garage. This one-of-a-kind home has great potential!

MLS 6104341 **\$299,900** REDUCED



989 DEVIL TRACK ROAD

3BR, 3BA fixer-upper on 4.5A has tons of potential. The house with walkout basement has been partially remodeled. Most of the materials, including all new appliances, are on-site. Large pole building will house all your vehicles and recreational gear. Whether you make it your home or an investment project.

MLS 6104536 **\$199,900**

LAND

1142 CAMP 20 RD

170+ acres of heavily forested land that has been replanted with many beautiful pine trees, poplar & cedar trees. Features gravel pit and pond and abutting State land. Seller is licensed real estate agent in MN.

MLS 6102798 **\$149,900**
REDUCED

49XX NORTH ROAD

40 wooded acres on a well-maintained county road can be yours to build your dream house, your hunting cabin, or pitch your tent. Here is a great base from which to explore the Arrowhead Region or just hike your acreage. Make it your own wildlife refuge.

6103079 **\$169,900**
REDUCED

1X BRANDON LANE

Beautiful lot just outside Grand Marais. Fall River runs through this property. Dramatic frontage!

MLS 6095813 **\$62,000**



XXX REASON ROAD

If you're looking for a remote property with access to recreation, this is the one for you! 120 acres of mature trees, varied topography, and wildlife. Make trails to explore the area and let your adventure begin.

MLS 6103087 **\$119,900**

TWO ISLAND RIVER ROAD

Large acreage! The lovely piece of land consists of 160 acres and is surrounded by the USFS. It is heavily wooded with some trails, gravel, wildlife pond - something for everyone!

MLS 6103734 **\$199,900**

NEW GUSTAV LANE

Beautiful 3+ acres on a peaceful private road. Ideally located close to Superior Hiking Trail and CC Snowmobile Trail. Country living close to Grand Marais.

MLS 6104354 **\$64,900**

JONVICK CREEK SITES

5 lots from 1.5 - 4.8 acres In the heart of Lutsen, just off the Caribou Trail. Maples, Pines, and cedars in varied arrangements will make a great back-drop for your home or cabin. Sites adjoin public land.

\$44,900 - \$56,900

623X LITTLE MARAIS ROAD

Build your North Shore getaway on this large parcel! Located high above Little Marais with views of Lake Superior, perfect blend of peaceful forest and easy access to the area.

MLS 6102257 **\$159,900**

X13 MURPHY MOUNTAIN TRAIL

Nicely wooded 5 acre lot at the end of a cul-de-sac with views of Lake Superior! Great location--just minutes from Grand Marais

MLS 6102645 **\$129,900**

COMMERCIAL



NEW 4907 HWY 61 E

Affordable commercial opportunity in Hovland! Or Lake Superior view building site! Or both!? There is room to have home and business. Create the quintessential North Shore home with that Lake Superior view, easy access from a paved road, and State-owned beach right across the road. Trails, lakes, streams, and parks await your outdoor adventures as well. Invent your future here!

MLS 6104724 **\$179,900**



12XX HIGHWAY 61 W

RARE, I repeat, RARE opportunity to find almost 6 acres of Commercial acreage, located in the heart of Grand Marais, with city sewer and city water. This property has approximately 825 ft. of frontage on Highway 61 and also has access from 3 different points off of 1st Street.

MLS 6103253 **\$989,900**



1315 E HIGHWAY 61

Incredible commercial opportunity at City Limits! Current use includes a 3BR rental unit, professional office, and huge home! Cathedral ceilings, partially finished second floor, beautiful custom designed kitchen, master bedroom with ensuite and private patio access. Bring your idea and make your dream come true!

MLS 6104280 **\$1,500,000**

LOOKING TO PURCHASE A NORTH SHORE HOME?

Call us today and we will help with your search.

(218) 663-7971

RECENT ACTIVITY AND NEW PROPERTIES AVAILABLE



PENINSULA POINT TRAIL - CARIBOU LAKE AREA

Quality custom designed and built home located near Lutsen's Caribou Lake on Peninsula Point Trail. This three bedroom two bath home is move-in ready and features main level living consisting of an entertaining designed kitchen, open floor plan to living and dining area, wood burning fireplace, main level master bedroom and bath, and main level laundry. In other words, no steps and easy year-round access. In addition, home orientation and Anderson windows provides a unique abundance of natural light.

MLS 6103715 // \$599,900



ONAGON LAKE PRIVATE VACANT SHORELINE PARCEL

Not too often does a private lake vacant lake shore parcel become available for sale. Located just past Seagull Lake on the historic Gunflint Trail, this private parcel covets nearly 3 1/2 acres and over 400' of shoreline. This is a perfect base camp location for BWCAW year-round adventures notwithstanding serving as its own private destination. Vacant parcel is adjacent to an award winning designed home by David Salmela. Parcel is surveyed with soil tests completed and several nice build sites.

MLS 6103686 // \$199,900



GEODESIC HOME ON LAKE SUPERIOR

Innovative geodesic dome home on Lake Superior with accessible beach! Open concept kitchen, living & dining, all with spectacular views of the lake. Windows recently updated with interior retro style accents. Accommodates large gatherings with 3 bedrooms, 2 baths, plus an upper loft with a walkout finished lower level that has T&G wood ceiling & walls with big lake views. There is also an additional deck on the home and oversized two-car detached garage.

MLS 6104220 // \$797,900



BIRCH CLIFF PARCELS

Stunning, breathtaking panoramic Lake Superior views! Perched atop the cliff edge, you have a bird's eye view of Grand Marais to the northeast and Silver Bay and Carlton Peak to the southwest. Electricity and broadband run along the road below for future access directly to the parcels. The prime location near Tofte has direct access to the Gitche Gami bike trail and is a short drive to Lutsen Mountains.

MLS 6103518 // \$174,900 | MLS 6103519 // \$189,000



SELLING YOUR NORTH SHORE HOME?

We know you're not just thinking about selling any property, you're thinking about selling your property that likely has a lot of heart strings, legacy and memories attached to it. **We get it. That's a big decision.** As a company we have learned how to carefully navigate this delicate pathway over the last three decades and will walk **side by side** with you on this selling journey.

Combine that with today's strong real estate market and sellers are provided with unique selling opportunities. Our agents have a down-to-earth approachability, knowledge, unique skill set, and deep love for Cook County—just like you do. With that being said, we bring the right skills to the table to ensure that you not only **feel comfortable** and understood throughout the process, but also **avoid making costly mistakes.**

MEET OUR AWESOME TEAM



INGER ADDRESS | Agent
(218) 216-7141
inger@lustenrealestategroup.com



MOLLY O'NEILL | Agent
(218) 370-2079
molly@lustenrealestategroup.com



MIKE LARSON | Associate Broker
(218) 370-1536
mike@staycvr.com



STEVE SURBAUGH | Broker



WE ARE VACATION RENTAL EXPERTS

Looking to buy a property for a vacation rental? Through our sister company, Cascade Vacation Rentals we have gained incredible knowledge about what the North Shore visitors are looking for. We are happy to use that information to help guide you into purchasing a property that is not only a good fit for you, but will also increase your chances of high rental income.

CASCADEVACATIONRENTALS.COM // (877) 415-8974



TALK TO TERRY!

TERRY R. BACKLUND BROKER/OWNER

PHONE: 218-387-1501 CELL: 218-370-8977

EMAIL: TERRY@BACKLUNDREALTY.COM

T.C. BACKLUND REAL ESTATE AGENT

PHONE: 651-373-5504 EMAIL: TY@BACKLUNDREALTY.COM

LORI A. BACKLUND REAL ESTATE AGENT



1039 W 2ND ST. GRAND MARAIS, MN

New Listing



3131 Sq. Ft. Senty Log Home
5+ Bedroom 2 Bath
MLS# 6104892
Price: \$499,900

7 W WISCONSIN ST, GRAND MARAIS, MN

New Price



3700+ sq. ft. Commercial building on mainstreet. Exposure to high volume pedestrian and vehicle traffic. MLS# 6100518
Price: \$449,900

728 CASPERS HILL RD. GRAND MARAIS, MN

New Listing

58.84 Acres with rustic 640 Sq. Ft. cabin. ATV and Deer Camp getaway. MLS #6104795
\$189,900



X475 BIRCH DRIVE GRAND MARAIS, MN

Sale Pending

4.75 acres. Close to Grand Marais. Awaiting your home. MLS# 6103426
Price: \$79,900



FOR RESULTS LIST YOUR PROPERTY HERE!



X470 BIRCH DRIVE GRAND MARAIS, MN



4.70 acres. Birch and poplar with a small ravine meandering through. MLS# 6103423
Price: \$64,900

WE HAVE BUYERS LOOKING FOR HOMES



PHONE: 218-387-1501 CELL: 218-370-8977
TERRY@BACKLUNDREALTY.COM



REALTORS®: Mike Raymond, Broker • Cathy Hahn, Assoc. Broker, ABR/GRI.
 Larry Dean, Realtor • Jake Patten, Realtor • Jess Smith, Realtor • Sue Nichols, Assoc. Broker • Gail J. Englund, GRI

Red Pine Realty • (800) 387-9599



(218) 387-9599 • Fax (218) 387-9598 • info@RedPineRealty.com
 PO Box 938, 14 S. Broadway, Grand Marais, MN 55604

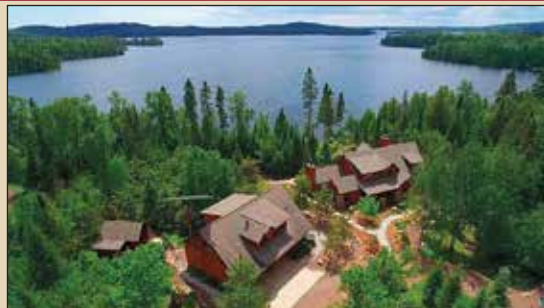


LAKE SUPERIOR PROPERTIES



WATERFRONT COMMERCIAL PROPERTY
 Beautiful waterfront commercial property in downtown district of Grand Marais, which includes 2 apartments overlooking Lake Superior, and a retail/rental business. **MLS#6103262 \$2,000,000**

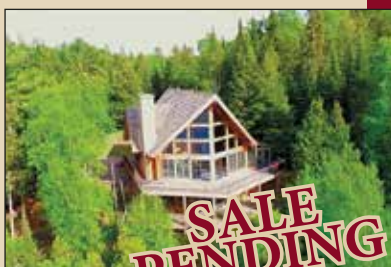
INLAND WATER PROPERTIES



GREENWOOD LAKE LUXURY HOME
 Exquisite architectural masterpiece created on 4.8 acres on gorgeous Greenwood Lake. Artfully nestled in a white pine forest, meticulously maintained and professionally landscaped, with flagstone and rock walkways to the main home, carriage house, and log cabin. Open concept with durable White Oak wood flooring throughout the main floor. Living room features vaulted ceilings, stone surround fireplace with a custom mantle, and the view of the lake from this room is truly something special! Easily accessible lake shore for swimming and boating. Pristine lake is clear and cool. Greenwood lake holds the state record for lake trout, but you can catch small mouth bass and rainbow trout off the dock. **MLS#6103823 \$1,895,000 PRICE REDUCED**

MILLION DOLLAR WILDERNESS VIEWS

Luxury home on edge of BWCA on scenic McFarland Lake. Wall of windows brings stunning scenery into all 3 levels, 6 bdrms, 4 baths, full lower level kitchen. Custom built home, 2 fireplaces, sunroom, large loft, sauna & laundry room. Spend summer evenings on expansive deck or in the screen house. Floating dock system, garage w/ workshop & generator room, and a 4-stall garage. Fully furnished. **MLS#6102693 \$799,000**



INLAND WATER PROPERTIES



GREENWOOD LAKE GEM
 Unique in appearance, rare in its lakeside setting, Scandinavian designed cottage of glass, steel and wood calls you to nature. Wilderness enters the living space and makes you part of the experience. Indoor galley-like kitchen spills outdoors to large cooking area and patio space. Knoll above cottage has amazing views. Build site waiting for a main home, overlooks lake. Pines, rocks and wilderness shoreline surround private point, 740' of meandering lakeshore w/ almost 4 acres, protected cove for your boat. Outhouse with carry-in water make rough-it lake retreat, expand into whatever your dreams entail. **MLS#6103446**

WILSON LAKE HOME
 Beautiful home in the woods w/ high-speed internet, located on pristine Wilson Lake, known to be among the best walleye fishing in Lake County. Watch the sunrise from the master bedroom & end your day watching the sunset by the fireplace. Custom beauty throughout: Hubbardton Forge lighting, Country Maple wood floors, slate & travertine flooring, hand-carved wood features inside & out. Kitchen features stainless steel appliances & granite countertops, opening to a great room overlooking the lake. **MLS#6102669**



SUNSETS, PINES AND WILDERNESS
 Enjoy amazing sunsets from your private cove, on 2.6 acres with 330+ feet of Wilson Lake shoreline. Wheelchair accessible lake home with gig-speed fiber optic internet. One level, all accessible living offers a large great room, 3 bedrooms with skylights, two accessible bathrooms with roll-in showers, in floor heat, knotty pine, slate and wood flooring, attached heated garage, with a large wood deck and boardwalk down to the lake and fire pit. Whatever your stage of life or physical ability, you can still enjoy living in nature. Enjoy all of your favorite outdoor activities: fishing, swimming, hiking, birdwatching, snowmobiling, snow shoeing, star gazing or skiing - an adventure in every season. **MLS#6104282 \$679,900**



NEW! ISLAND LIVING - WILDERNESS LAKE
 Large island in Greenwood Lake offers isolation, wilderness views and wildlife. Comfortable small home is set up for your retreat lifestyle, large shop building has upstairs guest quarters. Owners lived on the island for over 15 years. Off grid solar and generator power, new peat-moss septic system, lake water and satellite provide the comforts you desire. Air boat, pontoon and fishing boats included, and provide access with a protective cove and docks for easy landing and loading. One-of-a-kind property. Over 2000 feet of shoreline with 6.82 acres. **MLS#6104980 \$595,000**

BIRCH LAKE GET-AWAY CABIN
 Here's a great getaway cabin located mid-Gunflint Trail on the north shore! Close to restaurants, plenty of hiking, XC Ski and snowmobile trails. Birch Lake is a unique lake right on the Laurentine Divide, with great fishing and access to the Boundary Waters Canoe Area Wilderness. **MLS#6104093 \$299,000 PRICE REDUCED**



HUGE PINES, PRISTINE VIEWS, GUNFLINT LAKE

This large, densely wooded lot has 171 feet of shoreline on big water Gunflint Lake. Direct BWCA access, huge white pines, classic wilderness boulder shore and

vast views of Canada across the lake. Nice building site with easy access to the water. Good year-round road access with power and Broadband at the parcel. Build your dream lake home on this outstanding lake lot. **MLS#6099440 \$294,900**

EAST BEARSKIN LAKE CABIN

This spot is about as close to being in the Boundary Waters as you can get, land right across the lake is in the BWCAW. Home needs work. Renovate existing structure or build new. Septic installed in 1999. Lake draw water system. Gravel driveway in place & access down to the lakeshore for easy boat access. One room cabin w/ bunk area, kitchen, dining & living areas. All personal property stays except for vintage outboard motors. **MLS#6104096 \$225,000**





**RED PINE
REALTY**

REALTORS®: Mike Raymond, Broker • Cathy Hahn, Assoc. Broker, ABR/GRI.
Larry Dean, Realtor • Jake Patten, Realtor • Jess Smith, Realtor • Sue Nichols, Assoc. Broker • Gail J. Englund, GRI

Red Pine Realty • (800) 387-9599



(218) 387-9599 • Fax (218) 387-9598 • info@RedPineRealty.com
PO Box 938, 14 S. Broadway, Grand Marais, MN 55604



INLAND WATER PROPERTIES



PREMIER LOT GREENWOOD LAKE

This is a premier lot on stunning Greenwood Lake with 4.24 acres. The lot was selected for the peninsula lake front with 300 feet of lakeshore. There are excellent build sites with lovely views of the big lake. There is a stubbed in driveway to park

and a brushed walking corridor to the lake. There is a sign at the drive. **MLS#6102583 \$225,000**

WALK OR PADDLE INTO THE BWCA

35 acre property abuts Federal land & the BWCAW. It has 314 feet of shoreline on McFarland Lake w/ direct canoe access into the wilderness. Border Route Trail is a short walk away. Arrowhead Trail splits property w/ potential to have a small structure on the lake side, and a full cabin in a beautiful cedar, spruce and pine forest w/ high overlooks to the wilderness. There are not many opportunities like this still available! **MLS#6103514 \$152,900**



SALE PENDING



NORTH FOWL LAKE CABIN

Unique Northwoods escape off the "road" less traveled. The Boundary Waters is your backyard as the western property boundary abuts the BWCA. Accessed by plane, boat, canoe, or a Canadian boat landing. North Fowl is

a Border Lake on the 200 mile water border route. Comfortable off-grid seasonal cabin has open floor plan & sleeping loft w/ unique diamond willow rails. Wood heat & appliances run off of propane w/ solar electric. Over 200' of sandy shoreline w/ beautiful views & gradual slope to lake. **MLS#6104291 \$150,000**

HOMES & CABINS



MAJESTIC 4 BEDROOM HOME

This is the home you have been dreaming about, only 1 mile from Grand Marais. As you walk in on the wrap around deck, you will notice Lake Superior to the South, with unbelievable landscaping. 5 acres of privacy with National Forest out your back door. Large open design dining and living room area with abundant windows facing the Lake. Enjoy your meals at the informal granite island or on the spacious deck. Custom black ash cabinetry and separate pantry with abundant storage. Main floor master suite/bath is very private. Downstairs area could be a separate living area with walk out patio area. Great room is spacious for guests and family. Dual fuel, in floor heat. 3-car attached garage with drain and a separate 2-car garage. **MLS#6103486 \$765,000 PRICE REDUCED**



SALE PENDING

LARGE 4 BEDROOM HOME NEAR GRAND MARAIS

Original custom built Octagon home located just 4 miles from Grand Marais on the Gunflint Trail. The totally renovated home has bright sunny spaces, and cozy warm areas for separating a large family or guests. Quality is evident throughout, with beamed

ceilings, gas fireplace, gas "wood stove", new hardwood floors, plus new mechanicals/appliances. 2-car detached garage w/ one side used as heated shop space. 8 acres of woods provides privacy & room to roam. Potential to split home into 2 units. **MLS#6102705 \$459,900**

NEW! CHARMING TIMBER FRAME HOME

Enjoy seasonal lake views from this charming, timber-frame, 2+ bedroom home that exhibits excellence! Save money with energy efficient, 8 inch insulated panels and off peak electric in floor heat. 10 acres with a brand new 26 by 30 garage and an extra 24 by 30 bunkhouse. **MLS#6105002 \$435,000**



CONTEMPORARY 3 BEDROOM HOME

Eco-friendly home with dual fuel, off peak electric & in floor heat. Open concept design in the living area lets the Southern light shine in. Efficient kitchen w/ a propane stove & island area. Highly rated Marmoleum flooring w/ cork backing makes for a quiet & durable floor. Enjoy eating out on the spacious deck. Large great room upstairs. Lower-level walkout basement has a living room, bedroom & full bath. 9-acre parcel 2 miles from Grand Marais, w/ 2-car garage & paved driveway. Winter views of Lake Superior. **MLS#6104490 \$420,000**



SALE PENDING

LAKE SUPERIOR VIEW HOME

Comfortable house conveniently located 3 miles east of Grand Marais. Home is accented w/ aspen paneling & hardwood floors. Ample deck space between house & garage to enjoy the outdoors, grilling or picnicking. Lots to explore w/ hundreds of public acres abutting north side of property and the Devil Track River nearby. Garage has plenty of room for vehicles & tools, includes a workshop area and unfinished studio apt. upstairs for guest room/rental space. **MLS#6102062 \$399,999**



SALE PENDING



SALE PENDING

GRAND MARAIS HOME

Well maintained 3 bedroom home with a huge 3 car garage. House is on 2 lots & has a quiet, woody feel even though it is in the city limits. Enjoy spacious great room, with cozy fireplace & large pantry. Open design in kitchen/dining room is a wonderful place for those who like to entertain. Current owners remodeled w/ new wood accents, composite flooring & a fully remodeled master bath. **MLS#6103932 \$333,500**

HOMES & CABINS

BARN ON 18+ ACRES

18+ acres adjoining federal land close to Grand Marais & Cascade River State Park, includes a creek running through backside of property, a rolling field & a pond. Bring your vision to the 40'x30' barn w/ a poured concrete floor, 16'x10' bunkhouse, hoop garage & multiple sheds. Property sold as is, includes everything on site, some building materials, tools, mower etc. Power & water to the property, broadband internet at the road. **MLS#6103548 \$325,000**



SILVER BAY HOME

Here's your chance to own a home on the North Shore and create your space with this fixer upper. Silver Bay is located an hour north of Duluth. Includes 2 bedrooms, 1 bathroom and a detached garage. Close to Split Rock State Park, Gooseberry Falls and plenty of activities along the North Shore. **MLS#6102239 \$99,900**

CONDOS/TOWNHOMES

CARIBOU HIGHLANDS TOWNHOME

Unique opportunity - 1/4 Share Ownership at Caribou Highlands, a well-established ski-in/ski-out resort property in Lutsen. Minutes to golfing, hiking, biking, swimming & snowmobiling. Updated kitchen, newer appliances & granite countertop, as well as modern neutral decor and a cozy gas fireplace. Enjoy the deck for grilling or just taking in the views. **MLS#6104912 \$48,000**



SALE PENDING

COMMERCIAL



MULTI-USE PROPERTY HOVLAND

This 2.3 acre property has a great home site with lake views, great well and septic, and an existing structure used as a local store and food business. Building had a new patio in 2008 and new addition in 2010. Many options exist here from residential, rental, cottage industry, retail shop or continue its present use. Perfect set up for a move-to-the-Shore life change. Live and run a business in this peaceful location. Bring your idea and start the dream from here. **MLS#6103739 \$339,000**



COMMERCIAL



LARGE GRAND MARAIS LOT.
Nice 3.60 acre commercial lot with potential for multi family housing subject to city approval. Good location on the west end of Grand Marais just off Hwy 61. Easy access to the bike trail.
MLS#6089284 \$159,500

PRIME COMMERCIAL LOTS - LUTSEN
Highway 61 frontage-road access, nice forested lots (.95 acres & 1.05 acres). Great visibility in downtown Lutsen. Would make a great location for a small gallery, retail or restaurant. Another commercial 1.3 acre lot is available adjoining to the north, making potential for a large site.
MLS#6099360, 9361 \$97,900 each



RIVER/CREEK FRONTAGE



NEW! REMOTE PRIVACY, LAKE SUPERIOR VIEWS
This "80" acre property has high ridge views of the big lake. The property adjoins

Judge C.R. Magney State Park. Easements in place for road access on old logging trails. Ultimate privacy! Mixed, mature forest of evergreens and maples, creeks and pond. Walking distance to Brule River. There are many unique aspects to this beautiful and recreational property.
MLS#6104623 \$99,000



MONS CREEK WILDLIFE
40 acres w/ easy road access, good building sites, mature trees & open water views of Mons Creek. Lots of moose & waterfowl inhabit this 600 ft section of Mons Creek! You can canoe for some distance in the creek. Includes deeded access to Lost Lake, private wilderness lake, only a short walk away. Homeowners association stocks lake w/ brook trout. Walk-in landing provides easy access for canoe or small boat. Gated roads for security & privacy. Lost Lake Retreats is a truly secluded & private wilderness escape. **MLS#6089089 \$60,000**



MONS CREEK AND VIEWS
1000 ft of Mons Creek frontage & a great view from a high build site. Easy road access, but lots of privacy. 40 acre property w/ private deeded access to Lost Lake, a short drive away. Private lake w/ limited use, a true wilderness feel. Perfect cabin retreat location w/ added bonus

of private wilderness lake access. Homeowners association stocks lake w/ brook trout. Walk-in landing provides easy access for canoe or small boat. Roads are gated for security & privacy. Lost Lake Retreats is a truly secluded & private wilderness escape.
MLS#6089090 \$60,000

RIVER/CREEK FRONTAGE

DEEP WOODS, MONS CREEK.
Nice "40" with good tree cover and creek frontage, where you could launch your canoe. There's a great building site overlooking Mons Creek from a high point. Good road access, but private and secluded. The property has private deeded access to Lost Lake, which is a short walk away. Wilderness feel. New trail cut into the property so you can see the potential! **MLS#6089091 \$52,900**



ROLLING TERRAIN & POND
Deep woods and private access to Lost Lake. Good road access and many building site options. Beautiful beaver pond and creek split the 20 acre property. Lost Lake is a tucked-away gem with limited private property and no public access. Good trout fishing and moose

sightings. This is a remote retreat property with the added bonus of lake access on a pristine wilderness lake. **MLS#6098652 \$41,900**

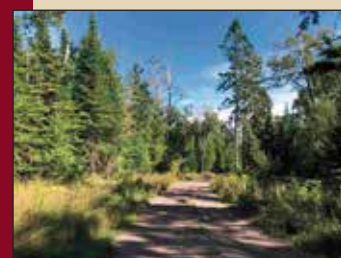
LAND/BUILDING SITES

LARGE PARCEL ADJOINING PINCUSHION TRAILS
This 14 acre parcel of mixed tree cover and rolling topography has all the great location aspects you desire. Just minutes from Grand Marais, close to the ski trails, hiking trail and wilderness access. Some lake view possible. Great location for your home or North Shore retreat. **MLS#6103099**



LAND/BUILDING SITES

LARGE, REMOTE ACREAGE - PRIVATE LAKE RIGHTS
This over 80-acre tract has some high ground with views of the hills to the south. Good road access. Some young planted pine trees. It adjoins a Private Conservation Easement area. The property is part of a private association with lake rights to Lost Lake, a limited access lake with shared carry-in landing from which you can launch your canoe or kayak. A unique opportunity. **MLS#6103975 \$74,900**



WOODED SECLUSION IN GRAND MARAIS.
Great wooded lot on west end of Grand Marais. Build your home within a short distance of the bike trail & a mile walk/drive into town, with privacy on a dead end shared road. Mature evergreen forest, nice building sites & good lake

effect, only a quarter mile off of Lake Superior. Small creek adds charm when it's running. Really secluded feeling location. Private sewer & water, city power. **MLS#6087228 \$69,500**



LUTSEN MAPLE FOREST LOT
Beautiful 5.24 acre wooded lot, covered in Maple Forest. In the fall this beauty will be ablaze with stunning colors. Caribou Lake Public Access nearby, hiking trails, Lutsen Mountains Ski Resort, Gitchee Gumees bike trail and all the things the North Shore has to offer.
MLS#6101916 \$68,500 PRICE REDUCED

SERVING BUYER'S AND SELLER'S NEEDS IN COOK AND LAKE COUNTY.

We'd love to help you sell your property, or if you're buying we would like to make your North Shore dreams come true.

SALES ARE STILL STRONG.

If you're considering selling, contact us for a market consultation about your property.

LAND/BUILDING SITES



CARIBOU HILLSIDE LOT

Beautiful 5+ acre wooded lot, covered in Maple Forest. In the fall this beauty will be ablaze with stunning colors. Caribou Lake Public Access nearby, hiking trails, Lutsen Mountains Ski Resort, Gitche Gumee bike trail and all the things the North Shore has to offer.

MLS#6101915 \$67,500 PRICE REDUCED

COYOTE RIDGE LOT

This 5-acre wooded lot is conveniently located close to Grand Marais but out of town just enough to have that woody feel. A quiet setting, close to biking and hiking trails. Enjoy all the North Shore has to offer! **MLS#6102976**

\$65,000 PRICE REDUCED



PRIVATE WOODED HOVLAND PARCEL

Northwoods seclusion with electricity & broadband. Driveway leads to a secluded build site w/ poplar, spruce and birch. Site is walking distance (250 yds) from a rural school bus stop! Flute Reed Road is a private drive maintained by residents who live further up.

Current owners have used it as a summer camp, complete with a cute shower house (bring your own water) & a county compliant outhouse. **MLS#6103451**



GRAND MARAIS VACANT LOT

Nicely wooded parcel on quiet street in the west end of town. Three full city lots facing south with city street, curb and gutter, utilities nearby. Build your home here and enjoy a quiet location within short walking distance to the harbor. **MLS#6102018**

LARGE ACREAGE NEAR TOM LAKE

40 acres near year round road access and power. An easy walk to the Tom Lake boat landing. Shared easement granted to build driveway into property. Many great building sites. Great recreational area. Easy access to trails and other lakes. **MLS#6095113 \$60,000**



40 ACRES - STONES THROW TO TOM LAKE

40 acres with an easy walk to the Tom Lake boat landing. Year-round road to within 1000 feet, power is possible here. Driveway easement granted to build shared access. Many great building sites. Easy access to trails and other lakes. **MLS#6095114 \$60,000**



WOODED 64 ACRES - ACCESS TO PRIVATE LAKE

This large wooded retreat property is within walking distance to a shared landing on Lost Lake - a private access lake. Good road access and many nice places to build a cabin. Privacy on top of restricted private road access makes this a unique opportunity for wilderness seclusion. **MLS#6103974 \$59,900**



WOODS, VIEWS AND PRIVACY

Nice lot only 4 miles from Grand Marais on county road. Potential Lake Superior views from a high lot with dense forest. Great location for your home or cabin. Close to trails and all the recreational opportunities in the area. **MLS#6096711 \$58,900**



HOME SITE NEAR GRAND MARAIS

Nice 5 acre property close to town on black-top county road. power and phone at the lot. Broadband available. Dense woods and potential Lake Superior Views. Close to hiking, bike trails and all the wilderness adventures you desire. **MLS#6096706 \$56,900**



TAIT LAKE PINE LOT

Welcome to Tait Lake Pines! You'll appreciate the private & peaceful location in Lutsen, MN, complete with its own hiking trails, outstanding views/settings, finely maintained roads, year-round accessibility, access to power, a calm and serene overall vibe AND deeded lake access to Tait Lake!! It'll keep you close to the Superior Hiking Trail, many more inland lakes and trails, Lutsen Ski Resort, Superior National Golf Course & access to food/beverage. **MLS#6098276 \$55,900**

REMOTE ACREAGE, ADJOINING FOREST LANDS-PRIVATE LAKE RIGHTS

This 43 acre tract has adjoining federal land and state park within walking distance. Good road access, with an old "logging road" into the property. The property is part of a private association with lake rights to Lost Lake, a limited access lake with shared carry-in landing from which you can launch your canoe or kayak. A unique opportunity. **MLS#6103979 \$46,900**



Plenty of privacy! **MLS#6103978 \$46,900**

REMOTE 43 ACRES - LOST LAKE ACCESS

This secluded 43 acres adjoins federal land and is located on a private gated road. There's a seasonal pond, existing "logging" road into the property for immediate use of the land. The property comes with shared private access to Lost Lake, a lake with no public access.

BRULE VALLEY LOTS

These remote, off-grid parcels with deeded access to the Brule River could be your own seasonal retreat; whether you're looking for a place to pitch a tent for a few nights, or if you want to build your dream cabin, there is a good canvas here for your creation!

Lot B (40ac) MLS#6102969 \$43,000;
Lot C (42.82ac) MLS#6102971 \$46,000;
Lot D (43.82ac) MLS#6102970 \$44,000



GREAT LOCATION HOME SITE.

Just minutes from Grand Marais on black top County Rd 7, a 5+ acre lot with easy access to power and Broadband. Good building sites. **MLS#6094099 \$45,900**



GREAT LOCATION FOR HOME OR CABIN

Just minutes west of Grand Marais on a black-top county road with power at the site, Broadband nearby. Five acre parcel with southern exposure. Potential Lake Superior views. Very affordable building site! **MLS#6096700 \$45,900**



REMOTE PEACE & QUIET

Hide away in this beautiful dense forest, with remote trails and private lake access to Lost Lake, a limited private property lake with no public access, and trout! Twenty acres of rolling topography and nice building sites for your cabin retreat. **MLS#6098653 \$39,900**



REMOTE WOODED HIDE-A-WAY

This 20 acre parcel is remote and has nice southerly exposure. Deeded access to Lost Lake gives you a place to fish and listen to the loons. It's a lake with limited private property and no public access. Great area for ATV's and miles of roads to explore. Lot C. **MLS#6098654 \$38,900**

HUNTER'S PARADISE

Hunter's paradise or remote solitude? 24 acres situated currently off grid (electrical hook up at Devil Fish Overlook). Mix of deciduous and pine trees with mature pines in the SW corner of the property, clearing areas for camper or possible build. The southern border neighbors State land. Additional acreage available. **MLS#6103981 \$36,780**



20 PEACEFUL ACRES

Peace and tranquility or base camp for hunting and recreation. 20 acres of moderately wooded land with areas suitable for clearing (currently off grid, closest electrical hook up Devil Fish Overlook). The parcel features a mix of Mountain Ash, White Cedar and other deciduous trees. Road access on two sides of the property. Additional acreage available. **MLS#6103983 \$32,780**

Road access on two sides of the property. Additional acreage available. **MLS#6103983 \$32,780**